



81 The Green, Lydd

Romney Marsh

Offers in Region of £315,000



81 The Green

Lydd, Romney Marsh

Stunning four bed mid-terrace in sought-after area. Spacious layout with contemporary kitchen/diner, large living room, and ground floor bedroom. Impressive garden with patio, lawn, and outbuildings. Walking distance to school and amenities. Ideal for modern family living. Don't miss out!

Council Tax band: TBD

Tenure: Freehold

EPC Energy Efficiency Rating: C

EPC Environmental Impact Rating: D

- Four Bedroom
- Large Living Room
- Extended Family Home
- Generous Garden
- Ground Floor Bedroom



Entrance Hall

Living Room

16' 9" x 12' 3" (5.10m x 3.73m)

Kitchen/Diner

18' 4" x 10' 4" (5.58m x 3.16m)

Utility Area

Bedroom

8' 3" x 8' 0" (2.51m x 2.45m)

Shower Room

7' 2" x 5' 5" (2.19m x 1.64m)

Bedroom

13' 1" x 11' 10" (4.00m x 3.60m)

Bedroom

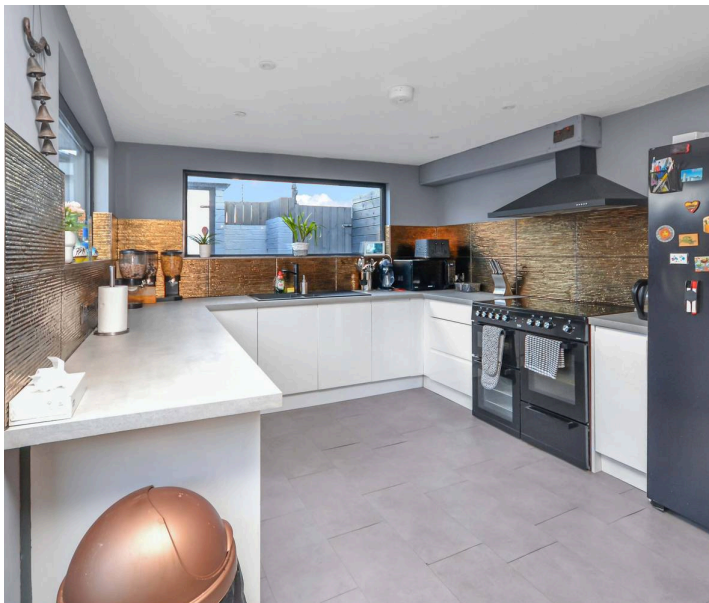
9' 6" x 7' 7" (2.90m x 2.30m)

Bedroom

10' 8" x 8' 10" (3.24m x 2.70m)

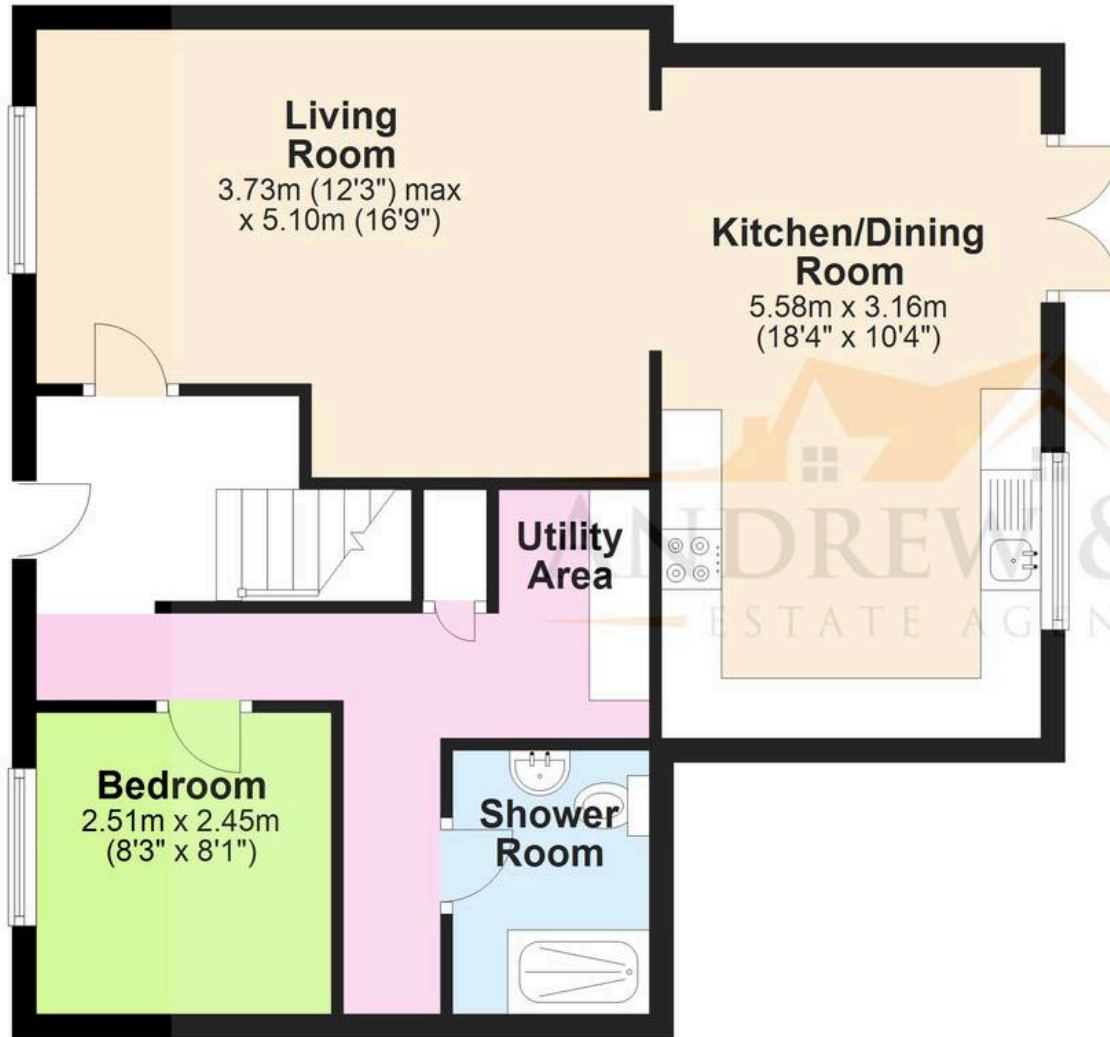
Bathroom

8' 1" x 4' 7" (2.46m x 1.40m)



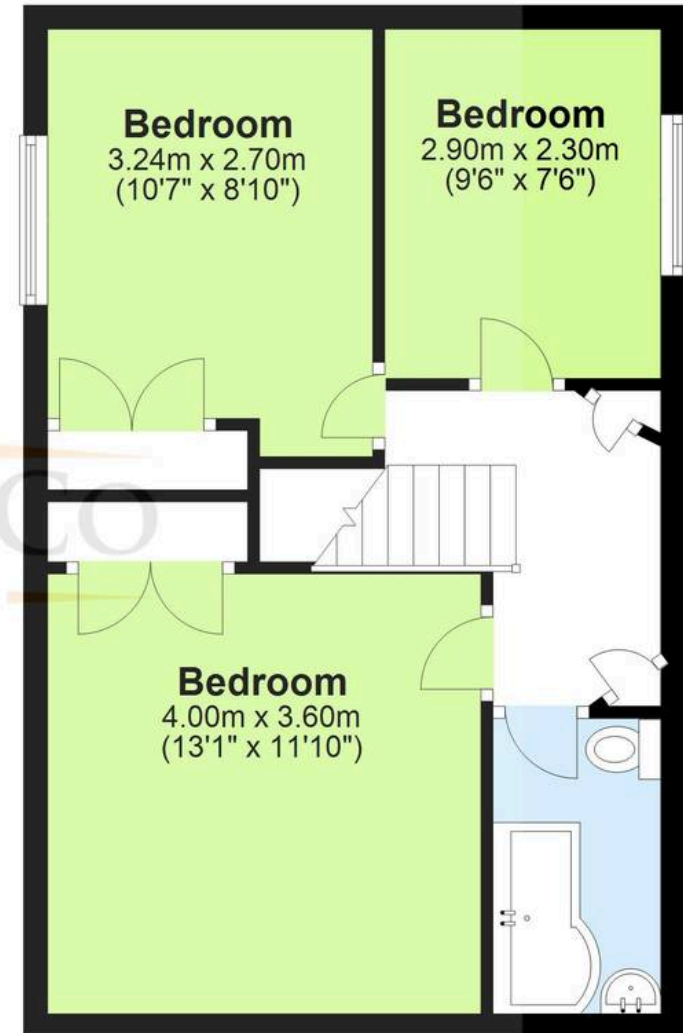
Ground Floor

Approx. 59.9 sq. metres (645.0 sq. feet)



First Floor

Approx. 42.4 sq. metres (456.1 sq. feet)



Total area: approx. 102.3 sq. metres (1101.1 sq. feet)

Plans are for layout purposes only and not drawn to scale, with any doors, windows and other internal features merely intended as a guide. NB: The attic rooms are included within the total square footage, but the eaves space is not.

Plan produced using PlanUp.



Skippers Estate Agents New Romney

55 High Street - TN28 8AH

01797 362898

Skippers