



**10 Sandyhurst Lane, Ashford**  
**£750,000**

# 10 Sandyhurst Lane

Ashford, Ashford

A substantial chalet style bungalow, enjoying in excess of 2000sqft of internal accommodation, plenty of driveway parking to the front, large south-easterly facing rear garden, potential for further extension and is offered for sale with no onward chain.

Council Tax band: E

Tenure: Freehold

- Substantial chalet style bungalow
- Versatile accommodation offering 4/5 bedrooms
- Large extending living room
- Impressive kitchen/dining room and separate formal dining room
- Two bathrooms - one on each floor
- Lovely large garden, south-easterly facing
- Plenty of driveway parking
- Prestigious Sandyhurst Lane location
- Easy reach of local amenities including the M20, Town Centre, International Station and Schools



**Entrance Hallway**

**Study**

**Bedroom/Reception room**

**Shower room**

**Living room**

**Kitchen/dining room**

**Dining room**

**Utility room**

**WC**

**First floor landing**

**Bedroom**

**Bedroom**

**Bedroom**

**Bathroom**

**Attic space**



**REAR GARDEN**

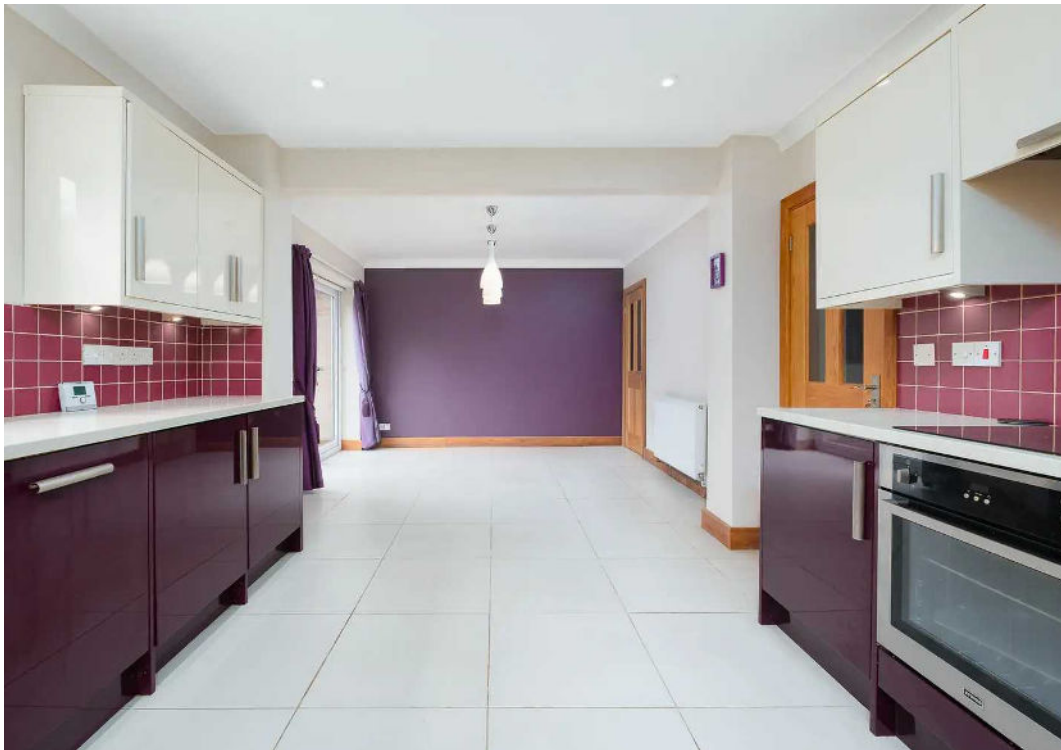
**GARAGE**

Single Garage

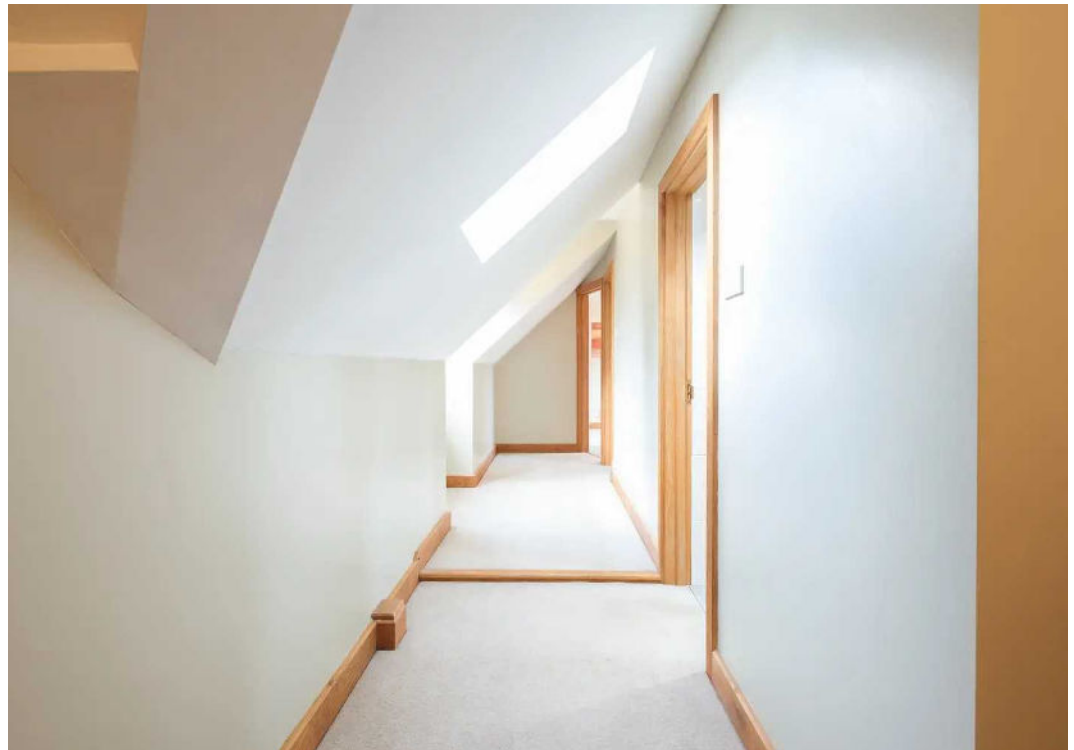
**GARAGE**

5 Parking Spaces















### Ground Floor

Approx. 114.2 sq. metres (1229.3 sq. feet)



### First Floor

Approx. 58.0 sq. metres (624.7 sq. feet)



Total area: approx. 172.2 sq. metres (1854.0 sq. feet)

Plans are for layout purposes only and are not drawn to scale, with any doors, windows and other internal features merely intended as a guide.  
Plan produced using PlanUp.