



## 61 Yew Tree Park Home, Charing

Offers in Region of £209,000



# 61 Yew Tree Park Home

, Charing

Stunning 2 bed park home in sought-after Charing. Modern design, spacious interior, private patio with picturesque views. Convenient driveway. Tranquil location with amenities and transport links nearby. A gem not to be missed!

Council Tax band: A

Tenure: Leasehold

- Newly Build Park Home
- Modern Design
- Sort After Location of Charing
- Patio Area
- Stunning Scenery Views
- Driveway for Two Cars



**Lounge**

11' 2" x 17' 0" (3.41m x 5.18m)

**Dining Room**

8' 0" x 8' 9" (2.44m x 2.66m)

**Kitchen**

8' 0" x 10' 6" (2.44m x 3.21m)

**Bedroom**

9' 9" x 11' 11" (2.96m x 3.64m)

**Bedroom**

9' 6" x 8' 8" (2.89m x 2.65m)

**Bathroom**





**GARDEN**

**DRIVEWAY**

2 Parking Spaces

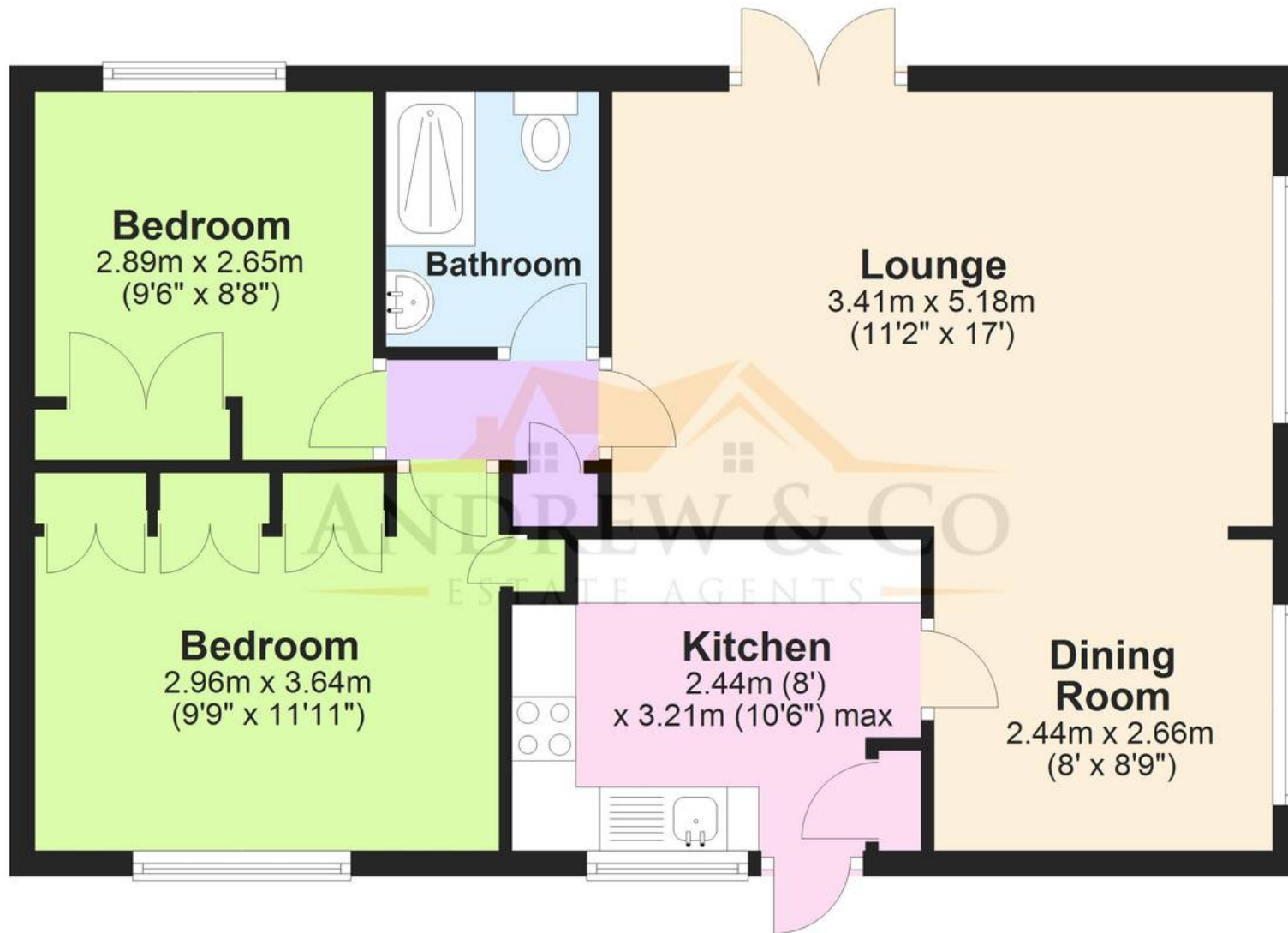






# Ground Floor

Approx. 57.8 sq. metres (622.0 sq. feet)



Total area: approx. 57.8 sq. metres (622.0 sq. feet)

Plans are for layout purposes only and not drawn to scale, with any doors, windows and other internal features merely intended as a guide.

Plan produced using PlanUp.



These particulars are intended to give a fair and reliable description of the property but no responsibility for any inaccuracy or error can be accepted and do not constitute an offer or contract. We have not tested any services or appliances (including central heating if fitted) referred to in these particulars and purchasers are advised to satisfy themselves as to the working order and condition, if a property is unoccupied at any time there may be reconnection charges for any switched off/disconnected or drained services or appliances. All measurements are approximate.

**Andrew & Co Estate Agents - Ashford**

01233 632383

[info@andrewandco.co.uk](mailto:info@andrewandco.co.uk)

