



12 Tartane Lane, Dymchurch

£310,000 Freehold

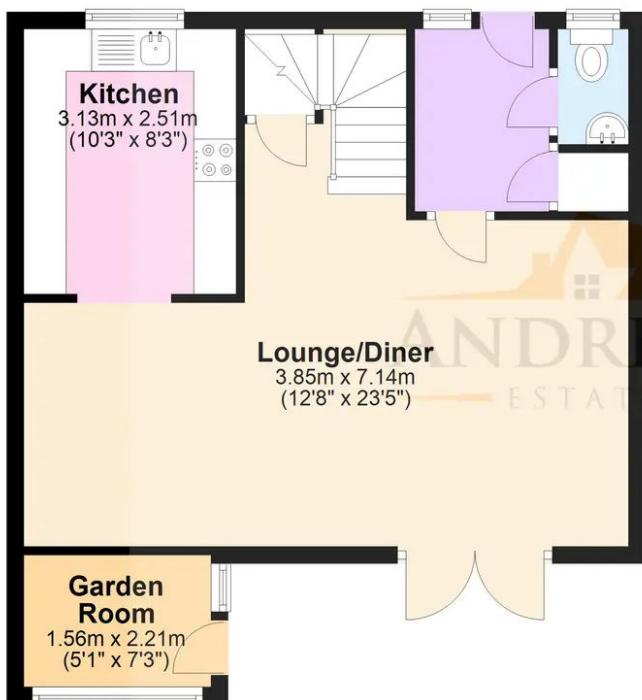
Three Double Bedrooms • Mid Terrace Home • Large Living Space • Dining Area • Courtyard Style Garden • Large Bathroom • Close to Sandy Beach • Walking Distance to Village Centre Shops





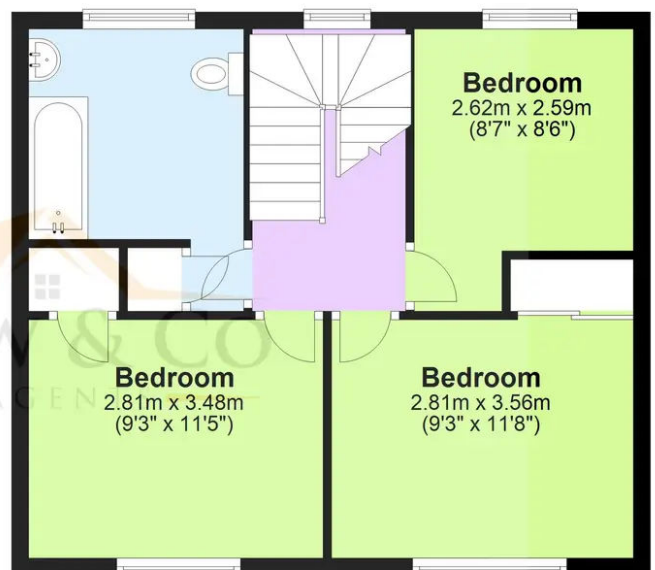
Ground Floor

Approx. 47.3 sq. metres (508.7 sq. feet)



First Floor

Approx. 44.6 sq. metres (479.7 sq. feet)



Total area: approx. 91.8 sq. metres (988.4 sq. feet)

Plans are for layout purposes only and not drawn to scale, with any doors, windows and other internal features merely intended as a guide.

Plan produced using PlanUp.