



**Church Lane, Brenzett**

Romney Marsh

**£425,000**





## Chapel Cottage Church Lane

Brenzett, Romney Marsh

Charming 3-bed rural house, modern kitchen, feature fireplace, ground floor bedroom, luxury bathroom. Tranquil garden, garage, off-street parking. Escape modern life, nearby amenities. Book a viewing today!

Council Tax band: TBD

Tenure: Freehold

EPC Energy Efficiency Rating: E

EPC Environmental Impact Rating: E

- Detached Cottage
- Rural Location
- Large Living Room
- Garden Room
- Modern Fitted Kitchen
- Feature Fireplace
- Wrap Around Garden





### Entrance Hall

### Living Room

23' 4" x 11' 7" (7.11m x 3.54m)

### Garden Room

24' 8" x 13' 1" (7.51m x 4.00m)

### Kitchen

13' 6" x 8' 11" (4.12m x 2.71m)

### Bathroom

7' 11" x 5' 5" (2.41m x 1.66m)

### Ground Floor Bedroom

8' 0" x 7' 8" (2.44m x 2.34m)

### Landing

### Bedroom

9' 0" x 17' 5" (2.74m x 5.31m)

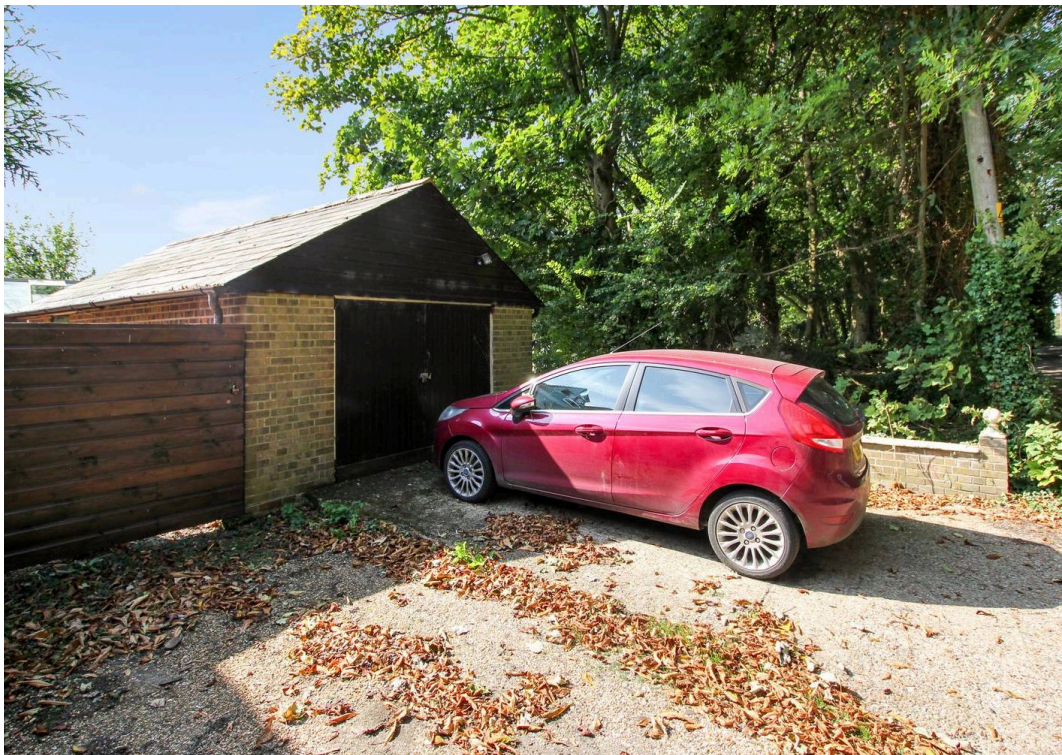
### Bedroom

10' 8" x 17' 5" (3.24m x 5.31m)

### WC



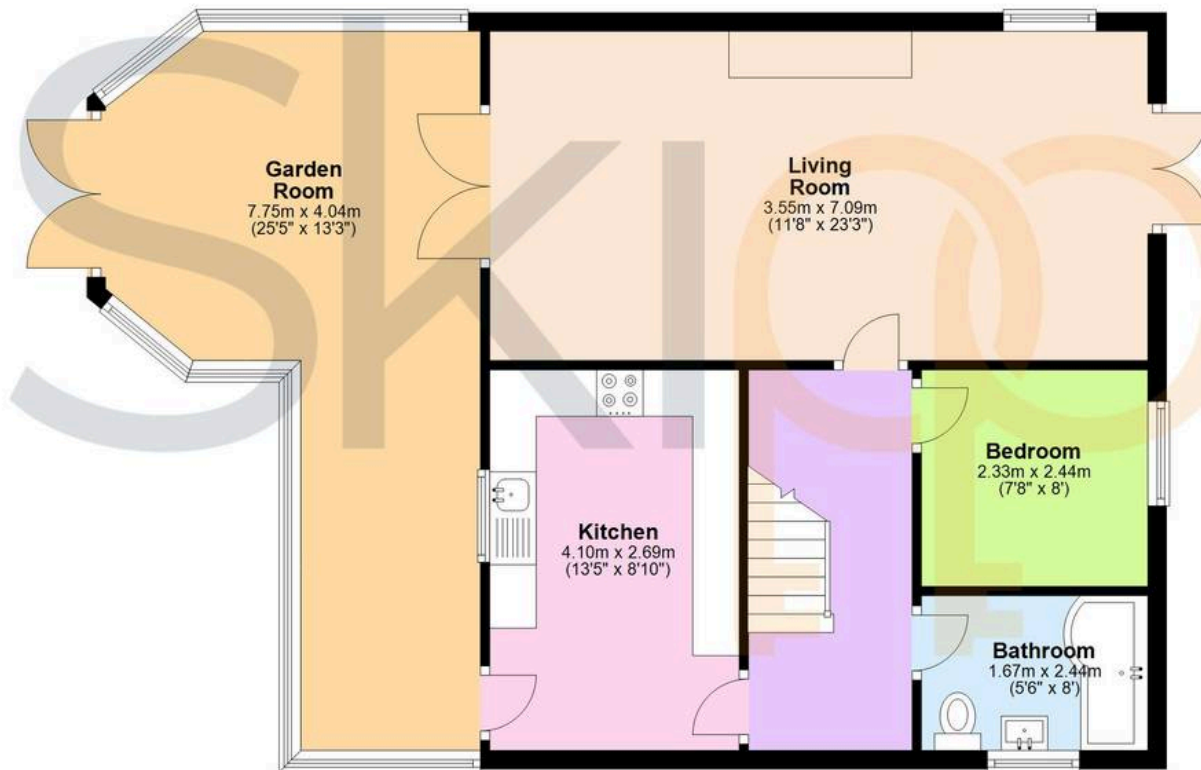






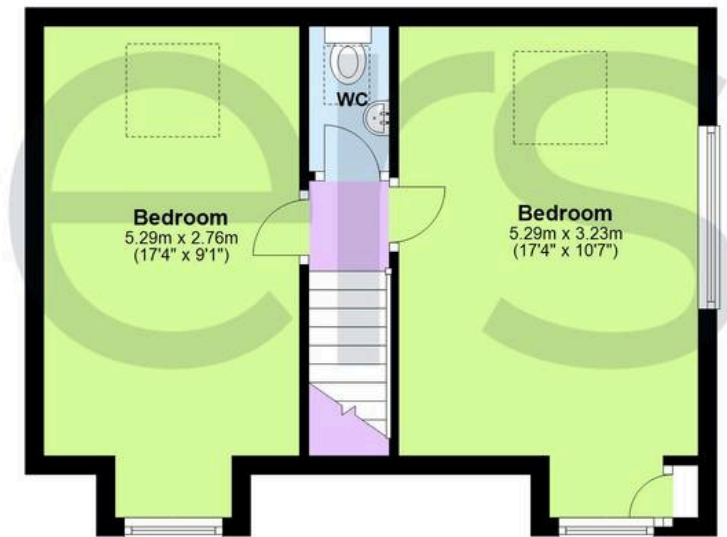
## Ground Floor

Approx. 77.4 sq. metres (833.1 sq. feet)



## First Floor

Approx. 34.4 sq. metres (369.9 sq. feet)



Total area: approx. 111.8 sq. metres (1203.0 sq. feet)

Plans are for layout purposes only and are not drawn to scale, with any doors, windows and other internal features merely intended as a guide.  
Plan produced using PlanUp.





## Skippers Estate Agents New Romney

55 High Street - TN28 8AH

01797 362898

Skippers