



Warren road, Littlestone

Kent

£925,000



## Warren road

Kent

Luxurious five bed detached house with grand entrance, spacious kitchen/family room, 3 en-suites, countryside views, double garage, and private garden. Ideal for family living near Littlestone Seafront. Schedule a viewing to experience modern luxury living at its best. Council Tax band: TBD

Tenure: Freehold

- Family Home
- Large Kitchen/Family Room
- Separate Living Room
- Five Double Bedrooms
- Three En-Suite Shower Rooms
- Countryside Rear Views
- Home Office
- Two Balconies with Countryside Views





- **Entrance Lobby**  
15' 8" x 11' 3" (4.77m x 3.43m)
- **Wc**  
9' 7" x 3' 3" (2.92m x 0.98m)
- **Kitchen/Family Room**  
27' 5" x 14' 7" (8.37m x 4.44m)
- **Utility Room**  
11' 3" x 7' 6" (3.42m x 2.29m)
- **Integral Double Garage**  
18' 6" x 18' 11" (5.64m x 5.77m)
- **Living Room**  
15' 3" x 15' 6" (4.66m x 4.72m)
- **Landing**
- **Bedroom**  
11' 3" x 14' 11" (3.42m x 4.55m)
- **En-Suite Shower Room**  
9' 0" x 6' 4" (2.74m x 1.94m)
- **Bedroom**  
12' 2" x 9' 1" (3.71m x 2.77m)
- **Bedroom**  
12' 0" x 11' 9" (3.66m x 3.58m)
- **En-Suite Shower Room**  
5' 11" x 6' 4" (1.81m x 1.94m)
- **Bedroom**  
13' 9" x 6' 11" (4.20m x 2.11m)
- **Home Office**  
13' 9" x 6' 11" (4.20m x 2.11m)
- **Family Bathroom**  
11' 2" x 8' 0" (3.40m x 2.44m)
- **Landing**
- **Bedroom**  
17' 11" x 15' 3" (5.45m x 4.65m)
- **En-Suite Shower Room**  
9' 9" x 3' 10" (2.98m x 1.16m)





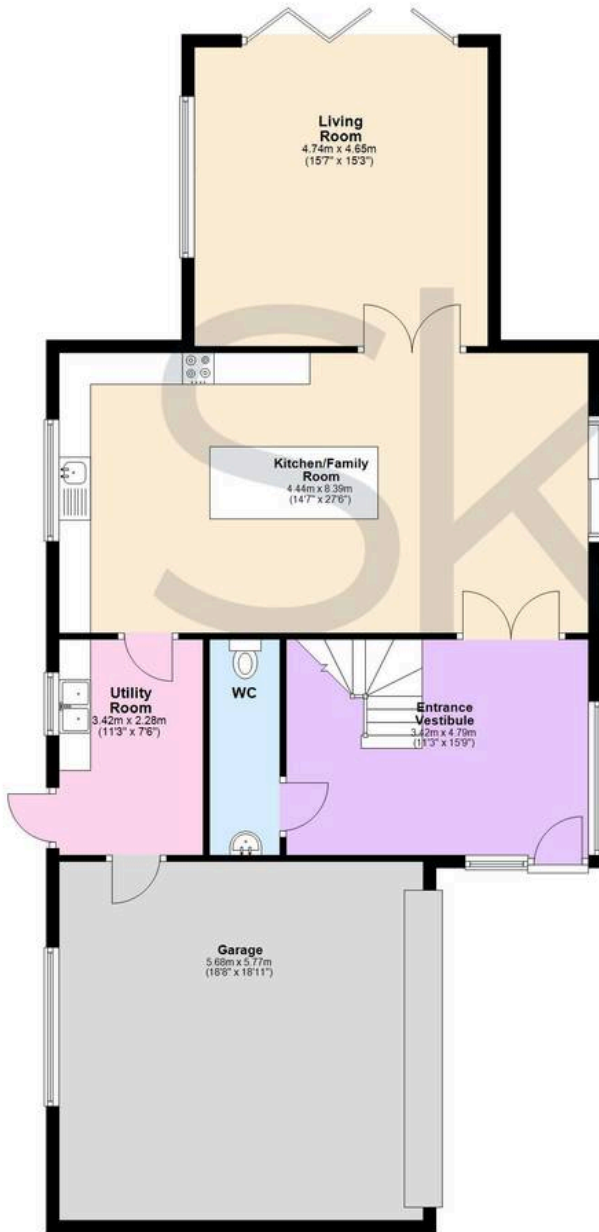




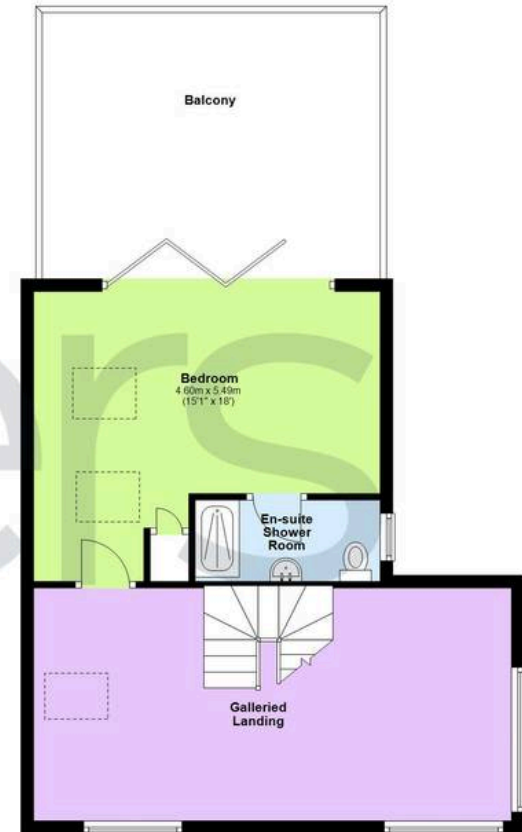
**First Floor**  
Approx. 128.5 sq. metres (1382.9 sq. feet)



**Ground Floor**  
Approx. 122.7 sq. metres (1320.4 sq. feet)



**Second Floor**  
Approx. 53.7 sq. metres (578.5 sq. feet)



Total area: approx. 304.9 sq. metres (3281.9 sq. feet)





## Skippers Estate Agents New Romney

55 High Street - TN28 8AH

01797 362898

Skippers