



**Madeira Road, Littlestone**

New Romney

**£1,300,000**

# Madeira House Madeira Road

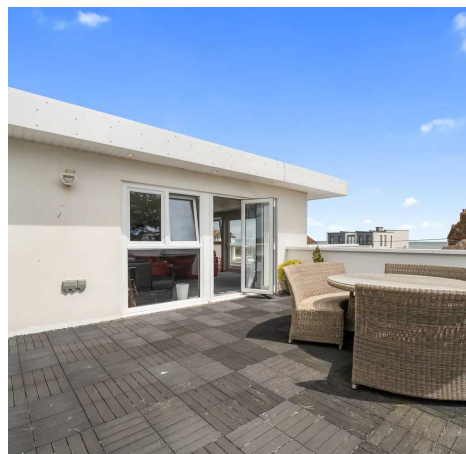
Littlestone, New Romney

Luxurious Four bed detached house with sea & golf course views. Contemporary interiors, spacious living areas, rear balcony, roof terrace, in-out driveway, integral garage, landscaped garden. Captivating blend of nature & modernity in prime location.

Council Tax band: G

Tenure: Freehold

- Four Bedroom
- Detached Home
- Light Bright Living Space
- Sea Views to Front
- Golf Course Views to Rear
- Large Roof Terrace
- Master Bedroom Suite
- Kitchen/Family Room





#### **Entrance Hall**

#### **Living Room**

21' 8" x 13' 2" (6.60m x 4.02m)

#### **Kitchen/Family Room**

16' 1" x 23' 10" (4.90m x 7.26m)

#### **Utility Room**

#### **Office**

11' 3" x 11' 1" (3.44m x 3.37m)

#### **Garden Room**

8' 10" x 24' 4" (2.68m x 7.42m)

#### **Wc**

#### **Landing**

#### **Bedroom**

16' 8" x 24' 8" (5.09m x 7.52m)

#### **Ensuite Bathroom**

#### **Bedroom**

10' 0" x 20' 11" (3.04m x 6.38m)

#### **Bedroom**

11' 5" x 13' 8" (3.47m x 4.16m)

#### **Bedroom**

11' 1" x 12' 2" (3.39m x 3.70m)

#### **Ensuite WC**





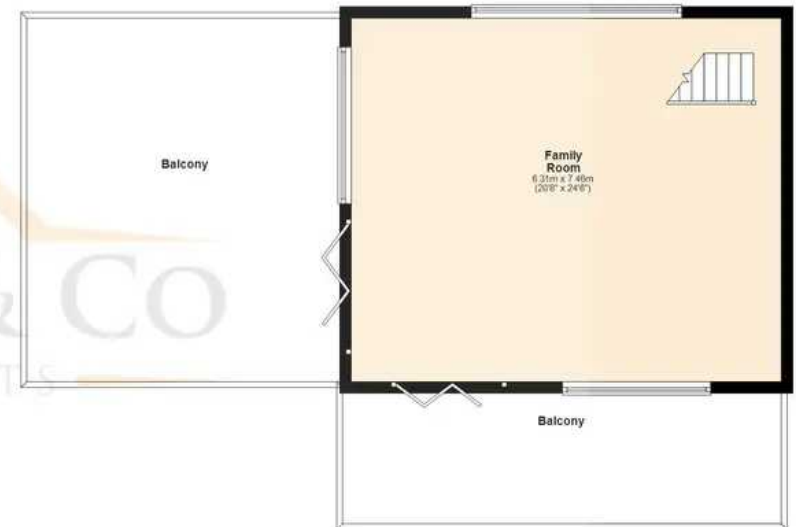
**Ground Floor**  
Approx. 151.3 sq. metres (1628.8 sq. feet)



**First Floor**  
Approx. 118.3 sq. metres (1272.9 sq. feet)



**Second Floor**  
Approx. 47.1 sq. metres (506.5 sq. feet)



Total area: approx. 316.6 sq. metres (3408.2 sq. feet)

Plans are for layout purposes only and not drawn to scale, with any doors, windows and other internal features merely intended as a guide.  
Plan produced using PlanUp.

These particulars are intended to give a fair and reliable description of the property but no responsibility for any inaccuracy or error can be accepted and do not constitute an offer or contract. We have not tested any services or appliances (including central heating if fitted) referred to in these particulars and purchasers are advised to satisfy themselves as to the working order and condition, if a property is unoccupied at any time there may be reconnection charges for any switched off/disconnected or drained services or appliances. All measurements are approximate.



Andrew & Co Estate Agents - New Romney

01797 362898

[newromney@andrewandco.co.uk](mailto:newromney@andrewandco.co.uk)

