



Hythe Road, Dymchurch

Romney Marsh

£1,100,000



Waterside Guest House

15 Hythe Road, Romney Marsh

Rare opportunity to own a refurbished 9-bedroom guest house in a popular seaside village. Features ensuite bathrooms, lounge, breakfast room, private living room, patio snug area with Koi pond. Expansive outdoor space ideal for entertaining. Perfect coastal business & lifestyle retreat.

Council Tax band: TBD

Tenure: Freehold

- Five Bedroom Guest House
- Four Further Private Bedrooms
- Open Country Views
- Guest Rooms All Ensuite
- Popular Sea side Village Location
- Guest Lounge
- Breakfast Room
- Feature Koi Pond





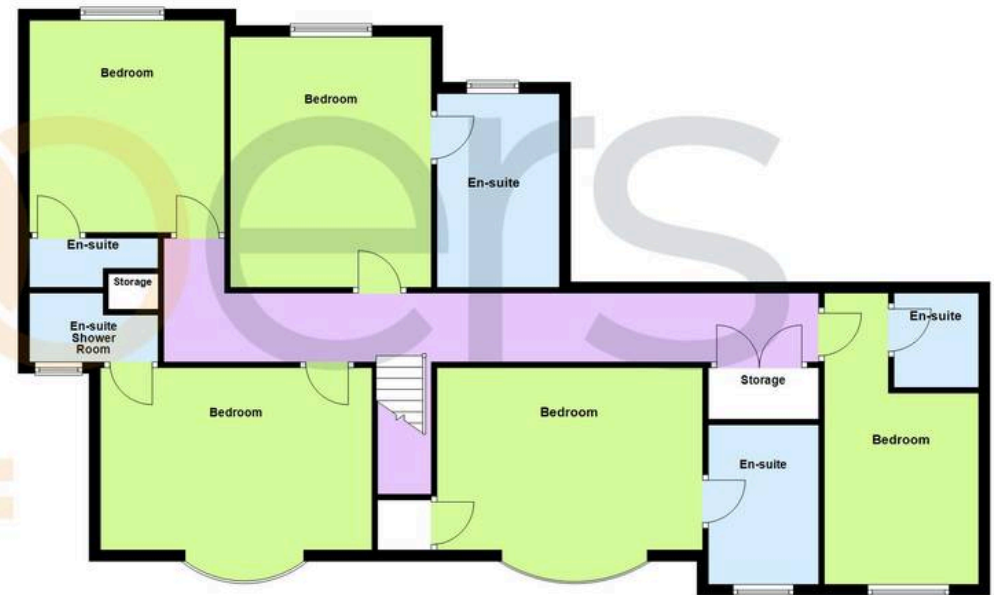
Ground Floor

Approx. 137.1 sq. metres (1475.9 sq. feet)



First Floor

Approx. 119.1 sq. metres (1282.2 sq. feet)



Total area: approx. 256.2 sq. metres (2758.1 sq. feet)



Skippers Estate Agents New Romney

55 High Street - TN28 8AH

01797 362898

Skippers