



Ellis Drive, New Romney

New Romney

In Excess of £375,000



Ellis Drive

New Romney

Stunning 3-bed detached house on a peaceful cul-de-sac. Spacious layout with 2 reception rooms, conservatory, large kitchen, and utility room. Generous garden, garage, and open country views. Ideal for relaxing and entertaining. Chain-free, ready to move in. Council Tax band: D

Tenure: Freehold

- Three Bedroom Home
- Large Kitchen/Breakfast Room
- Separate Utility Room
- Cul de Sac Location
- Open Country Views



Entrance Hall

Living Room

13' 8" x 10' 11" (4.17m x 3.33m)

Dining Room

10' 7" x 10' 1" (3.22m x 3.08m)

Conservatory

10' 8" x 7' 10" (3.26m x 2.40m)

Kitchen

9' 9" x 12' 10" (2.96m x 3.92m)

Utility Room

8' 0" x 5' 1" (2.44m x 1.55m)

WC

Landing

Bedroom

9' 11" x 11' 9" (3.02m x 3.57m)

Bedroom

9' 11" x 10' 0" (3.02m x 3.05m)

Bedroom

10' 0" x 7' 8" (3.05m x 2.34m)

Family Shower Room

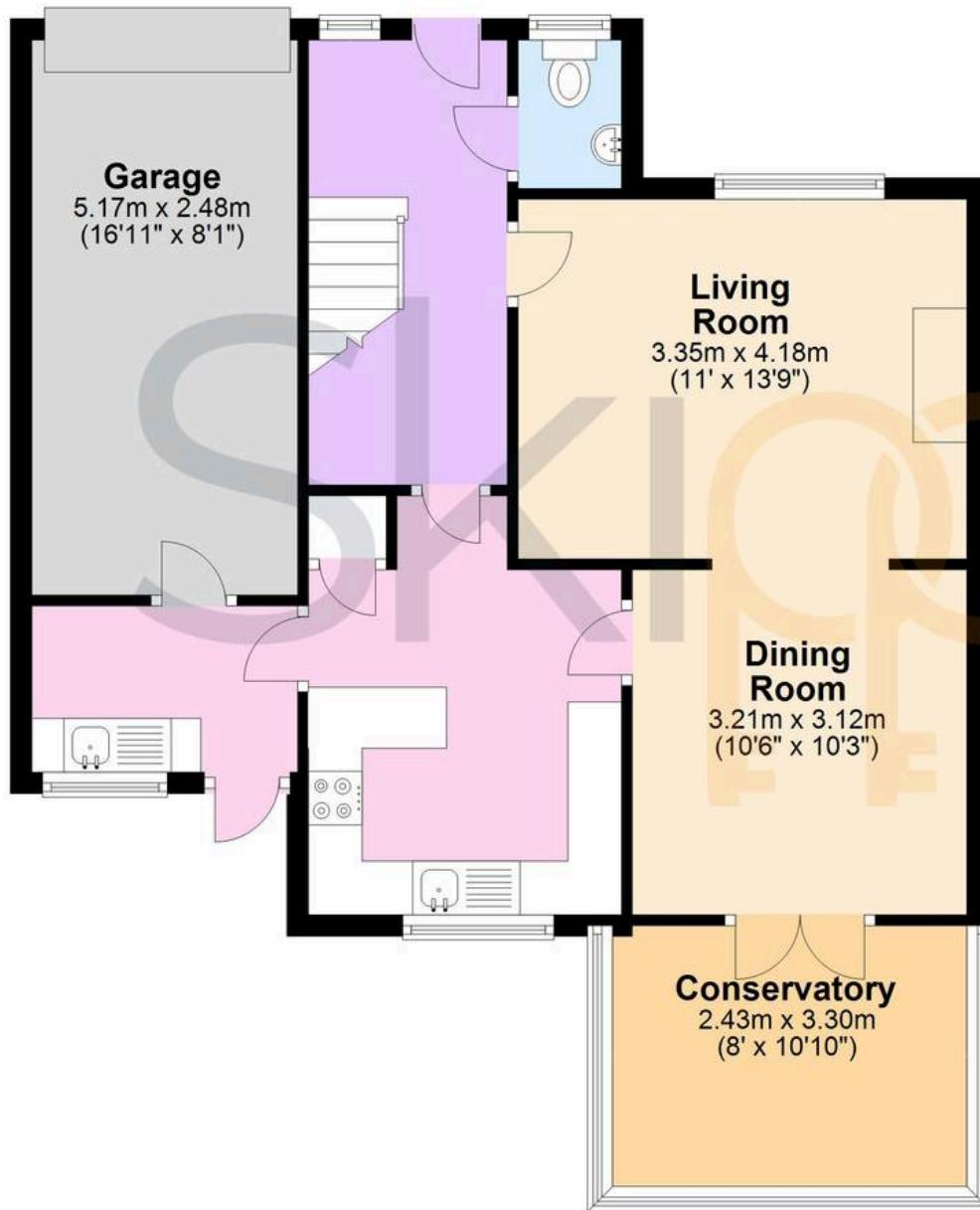
6' 7" x 8' 7" (2.00m x 2.61m)





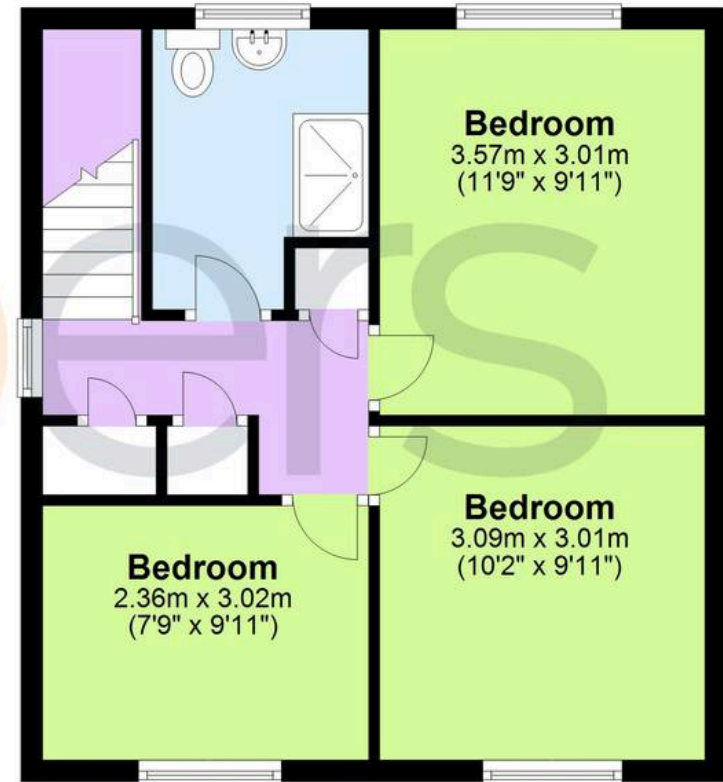
Ground Floor

Approx. 71.1 sq. metres (764.8 sq. feet)



First Floor

Approx. 41.5 sq. metres (446.5 sq. feet)



Total area: approx. 112.5 sq. metres (1211.3 sq. feet)



Skippers Estate Agents - New Romney

55 High Street - TN28 8AH

01797 362898

newromney@skippers-ea.co.uk

skippers-ea.co.uk

Skippers