



Sycamore Close, Dymchurch

Romney Marsh

£375,000



5 Sycamore Close

Dymchurch, Romney Marsh

Rarely available bungalow in peaceful Dymchurch village. Large living room, mezzanine floor, conservatory, 4 bedrooms. Kitchen with garden view. Workshop, off-street parking for 2 cars. Close to shops, beach. Schedule a viewing today!

Council Tax band: C

Tenure: Freehold

- Four Bedroom
- End of Terrace Bungalow
- Large Living Room
- Kitchen/Diner
- Wrap Around Garden
- Workshop
- Central Location
- Suitable for a Growing Family



Entrance Hall

Living Room

21' 9" x 14' 9" (6.62m x 4.50m)

Mezzanine Floor

14' 7" x 6' 10" (4.45m x 2.09m)

Conservatory

10' 0" x 12' 10" (3.04m x 3.92m)

Kitchen / Diner

11' 4" x 19' 0" (3.45m x 5.80m)

Bedroom

13' 0" x 13' 1" (3.97m x 4.00m)

Bedroom

12' 7" x 11' 1" (3.84m x 3.39m)

Bedroom

9' 9" x 10' 6" (2.98m x 3.20m)

Bedroom

8' 5" x 8' 11" (2.56m x 2.73m)

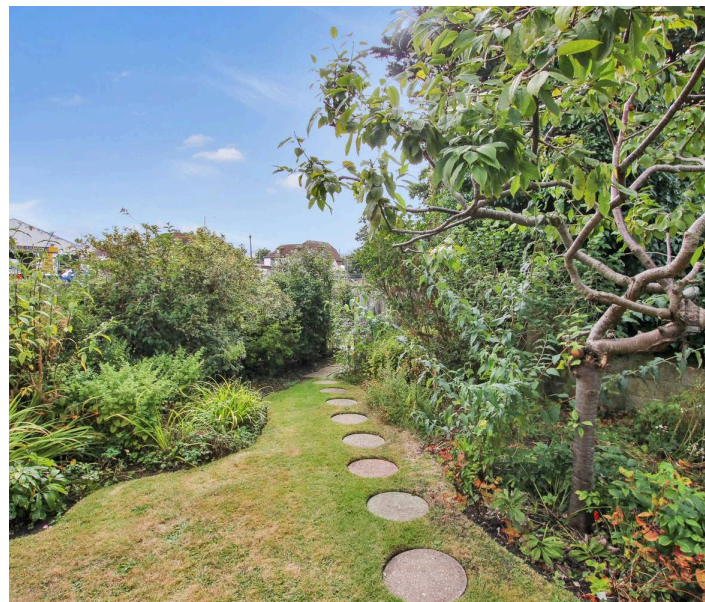
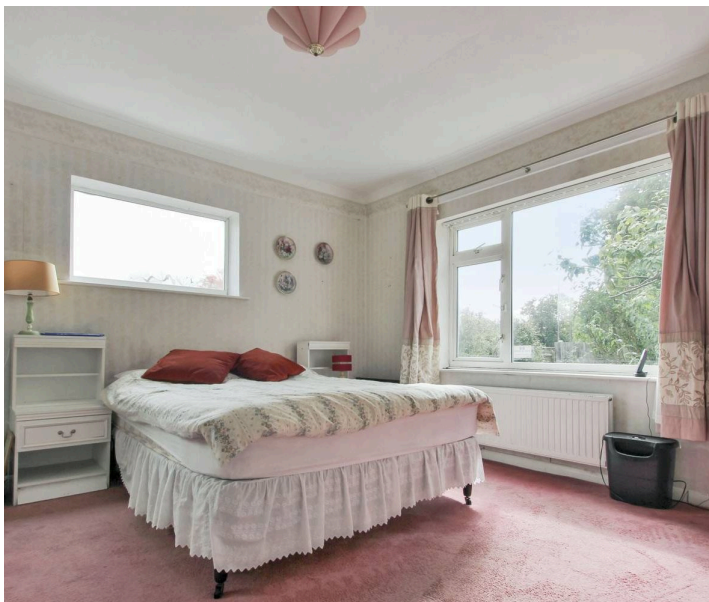
Shower Room

10' 8" x 5' 1" (3.25m x 1.55m)

Wc

4' 4" x 5' 10" (1.33m x 1.78m)

Garden Workshop





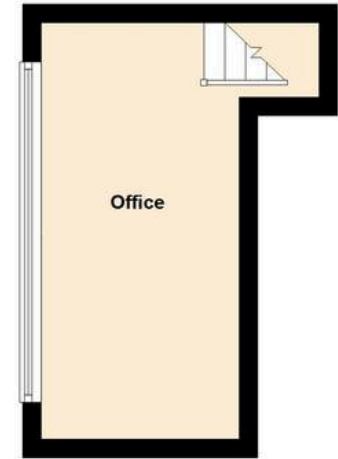
Ground Floor

Approx. 134.8 sq. metres (1451.5 sq. feet)



Mezzanine

Approx. 10.3 sq. metres (111.2 sq. feet)



Total area: approx. 145.2 sq. metres (1562.7 sq. feet)



Skippers Estate Agents New Romney

55 High Street - TN28 8AH

01797 362898

Skippers