



Laystone Stone Street, Lympne

Offers in Region of £350,000




ANDREW & CO
ESTATE AGENTS



Laystone Stone Street

Lympne, Hythe

Charming 3-bed semi-detached house in Lympne Village. Generous rear garden with wood cabin, fish pond, garage & ample driveway parking for multiple vehicles. Perfect for outdoor entertaining and relaxation in tranquil countryside setting.

Council Tax band: TBD

Tenure: Freehold

- Three Bedroom Semi-Detached Period House
- Countryside Location
- Popular Lympne Village
- Off Street Parking For Multiple Vehicles
- Garage With Power
- Generous Rear Garden

Porch

UPVC glazed front door, laminate flooring.

Entrance Hall

UPVC glazed front door, carpeted floor coverings, stairs to first floor landing, radiator, door to:

Lounge

13' 1" x 11' 4" (3.99m x 3.45m)

UPVC double glazed bay window to front, carpeted floor coverings, coving, radiator, feature open fireplace.

Dining Room

12' 8" x 10' 0" (3.86m x 3.05m)

Double glazed window to lean to, carpeted floor coverings, understairs storage cupboard, radiator. Opening to:

Kitchen

13' 7" x 10' 7" (4.14m x 3.23m)

Single glazed window into lean to, single glazed wooden door to side, single glazed door to conservatory. Kitchen comprises range of matching wall and base units, fan electric oven & electric hob, integrated fridge/freezer, floor standing oil boiler.

Conservatory

8' 11" x 7' 10" (2.72m x 2.39m)

UPVC double glazed conservatory

Lean to

10' 4" x 3' 10" (3.15m x 1.17m)

Wooden lean to with plumbing for washing machine.

WC

Outside WC with wooden latched door.

Landing

carpeted floor coverings, airing cupboard, loft hatch. Doors to:

Bedroom

15' 9" x 11' 0" (4.80m x 3.35m)

UPVC double glazed windows to front, carpeted floor coverings, radiator.

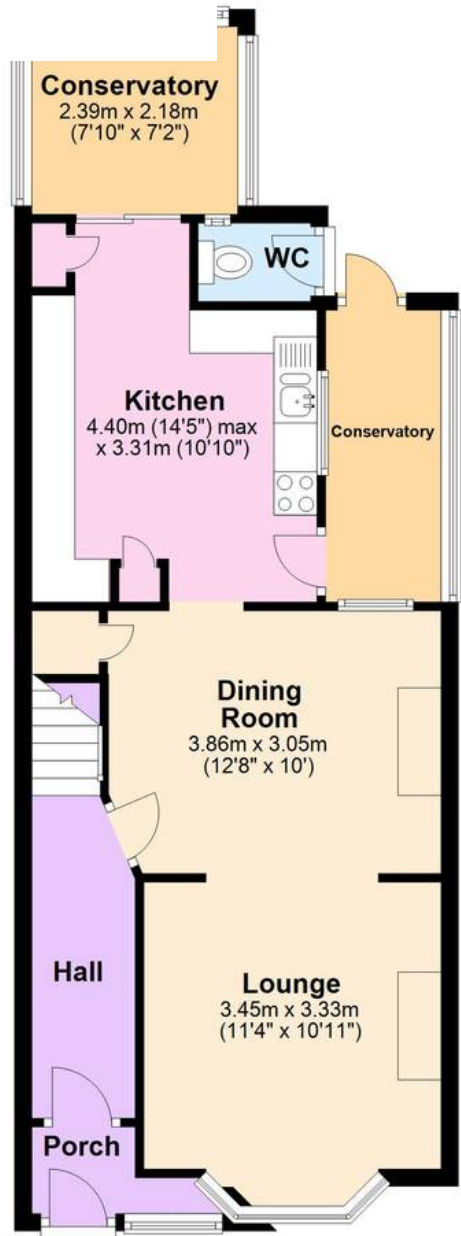
Bedroom

10' 0" x 9' 11" (3.05m x 3.02m)

UPVC double glazed window to rear, carpeted floor coverings, radiator.



1d Floor
metres (602.8 sq. feet)



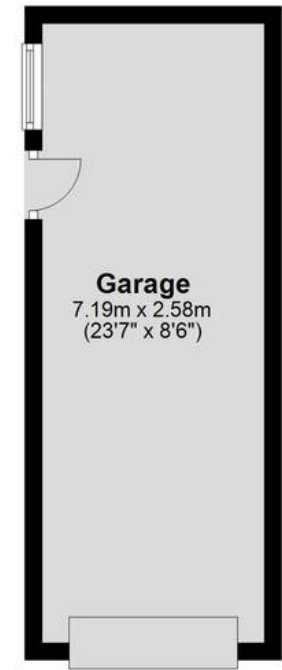
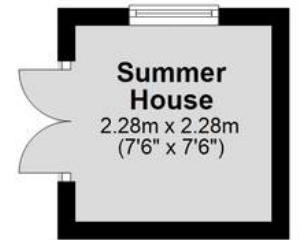
First Floor

Approx. 46.4 sq. metres (499.4 sq. feet)



Outbuilding

Approx. 23.8 sq. metres (255.8 sq. feet)



Whilst every attempt has been made to ensure the accuracy of the floor plan contained here, measurements of doors, windows, rooms and any other items are approximate and no responsibility is taken for any error, omission or mis-statement. This plan is for illustrative purposes only and should be used as such by and prospective purchaser.
Plan produced using PlanUp.