



32 Repton Avenue, Ashford

Offers in Region of **£365,000**

32 Repton Avenue

Ashford, Ashford

Council Tax band: D

Tenure: Freehold





32 Repton Avenue

Ashford, Ashford

Council Tax band: D

Tenure: Freehold

EPC Energy Efficiency Rating: B

EPC Environmental Impact Rating: B



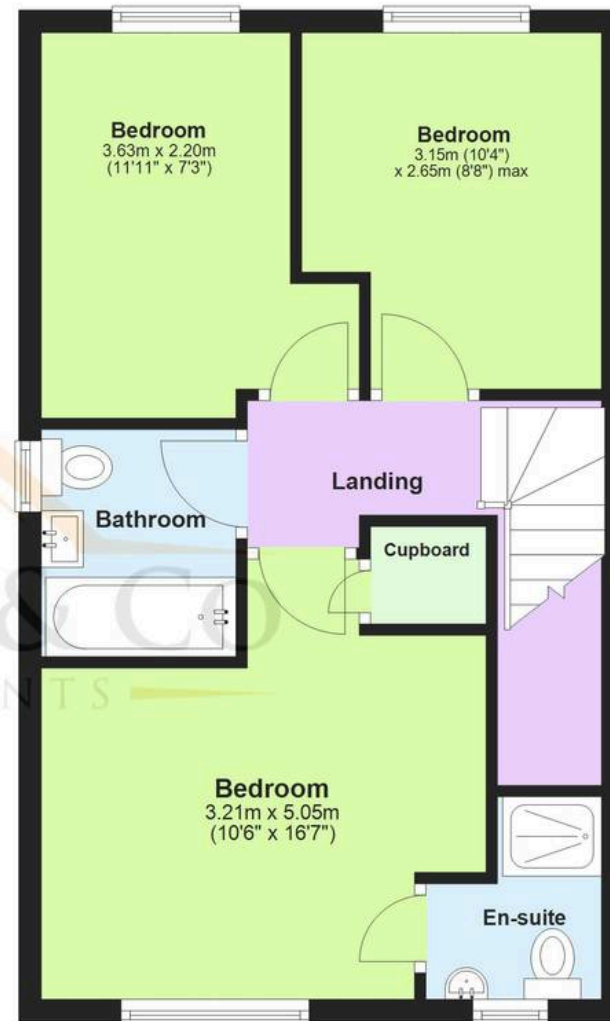
Ground Floor

Approx. 45.0 sq. metres (484.7 sq. feet)



First Floor

Approx. 45.5 sq. metres (489.9 sq. feet)



Total area: approx. 90.5 sq. metres (974.6 sq. feet)

These particulars are intended to give a fair and reliable description of the property but no responsibility for any inaccuracy or error can be accepted and do not constitute an offer or contract. We have not tested any services or appliances (including central heating if fitted) referred to in these particulars and purchasers are advised to satisfy themselves as to the working order and condition, if a property is unoccupied at any time there may be reconnection charges for any switched off/disconnected or drained services or appliances. All measurements are approximate.

Andrew & Co Estate Agents - Ashford

01233 632383

info@andrewandco.co.uk

