



The Laurels Harden Road, Lydd

Romney Marsh

In Excess of £310,000



3 The Laurels Harden Road

Lydd, Romney Marsh

Charming 3-bed semi-detached house in Lydd, Romney Marsh. Spacious living room, modern kitchen, 2 double bedrooms, rear garden, and driveway parking for 2 cars. Close to amenities, schools, and transport links. Ideal for a growing family. Schedule a viewing today!

Council Tax band: C

Tenure: Freehold

EPC Energy Efficiency Rating: B

EPC Environmental Impact Rating: B

- Semi Detached Home
- Low Maintenance Rear Garden
- Large Living Rooms
- Plantation Shutters Throughout
- Modern Kitchen
- Fitted Wardrobes
- Popular Location
- Driveway



Entrance Hall

Living Room

12' 11" x 15' 3" (3.93m x 4.66m)

Kitchen

13' 2" x 8' 10" (4.01m x 2.69m)

Wc

Landing

Bedroom

15' 3" x 9' 8" (4.65m x 2.95m)

Bedroom

9' 0" x 9' 11" (2.75m x 3.02m)

Bedroom

7' 7" x 11' 3" (2.32m x 3.43m)

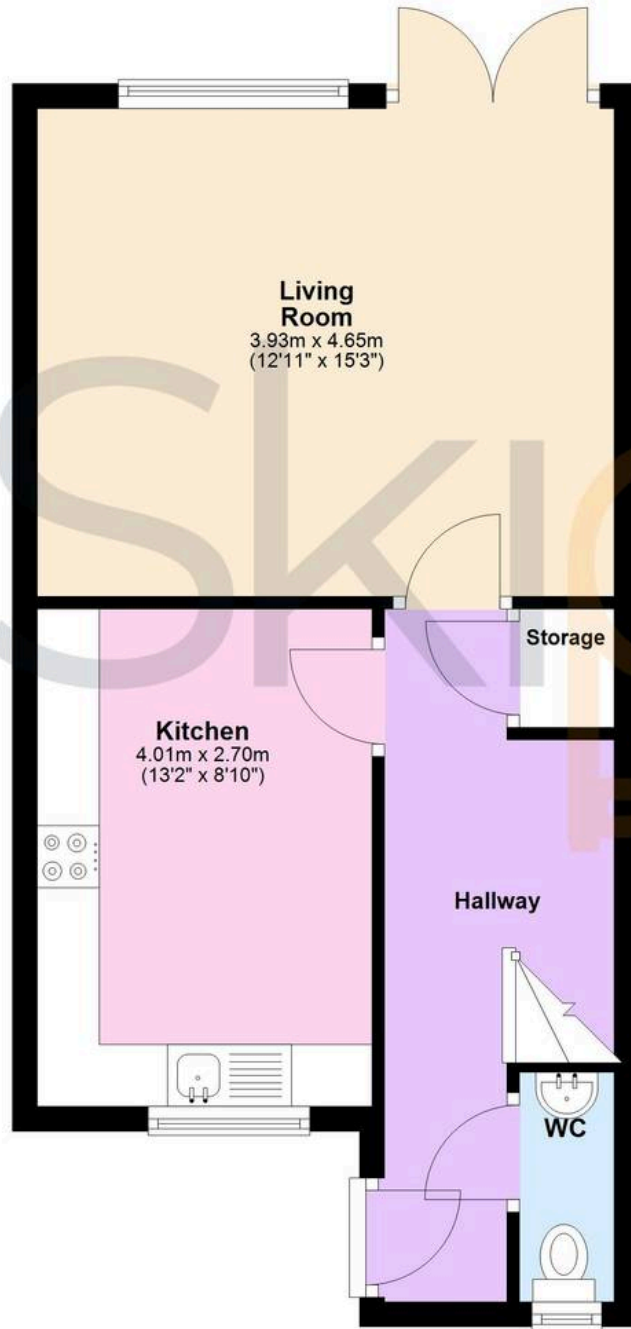
Bathroom

8' 11" x 6' 2" (2.73m x 1.87m)



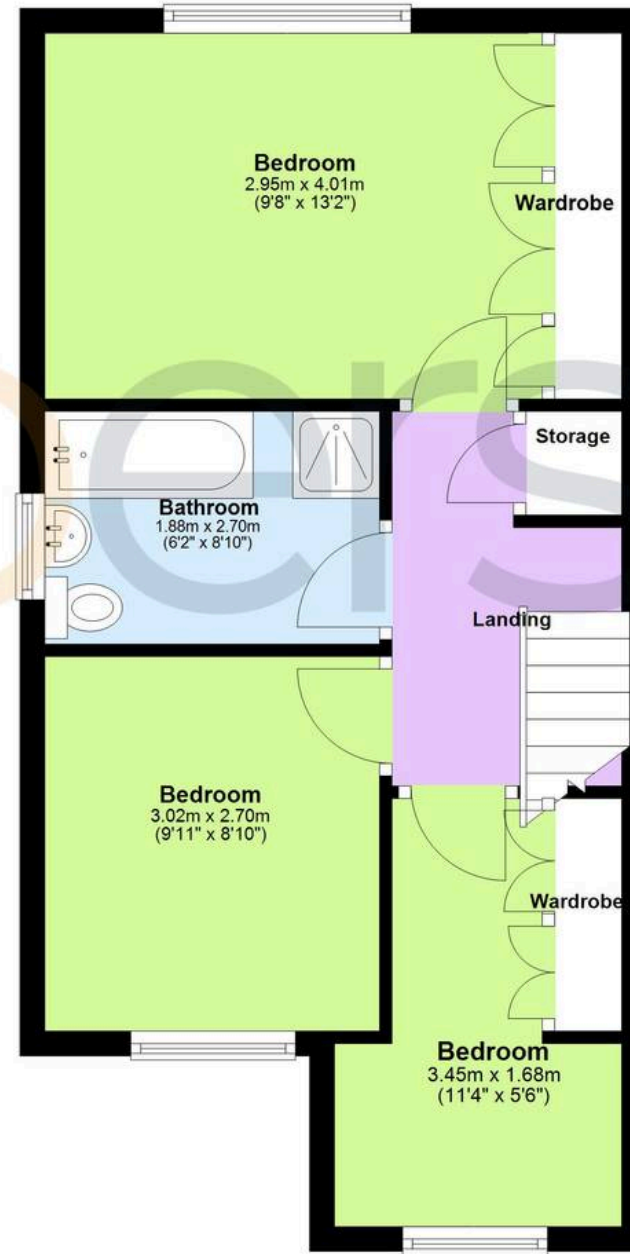
Ground Floor

Approx. 40.3 sq. metres (434.3 sq. feet)



First Floor

Approx. 41.1 sq. metres (442.1 sq. feet)





Skippers Estate Agents New Romney

55 High Street - TN28 8AH

01797 362898

Skippers