



28 Skinner Road, Lydd

Romney Marsh

£220,000



## 28 Skinner Road

Lydd, Romney Marsh

Charming 2-bed period cottage in Lydd town with living room, dining room, galley kitchen. Two double bedrooms, modern bathroom. Open Rype views, courtyard garden. Close to amenities, ideal for small families. Viewing recommended.

Council Tax band: B

Tenure: Freehold

EPC Energy Efficiency Rating: E

EPC Environmental Impact Rating: E

- Two Bedroom
- Period Cottage
- Open Views To Front
- Two Reception Spaces
- Two Double Bedrooms
- Courtyard Garden
- Close to Local School
- Galley Kitchen



**Entrance Porch**

**Living Room**

11' 0" x 13' 0" (3.36m x 3.95m)

**Dining Room**

11' 2" x 10' 6" (3.41m x 3.21m)

**Kitchen**

5' 5" x 14' 2" (1.66m x 4.31m)

**Landing**

**Bedroom**

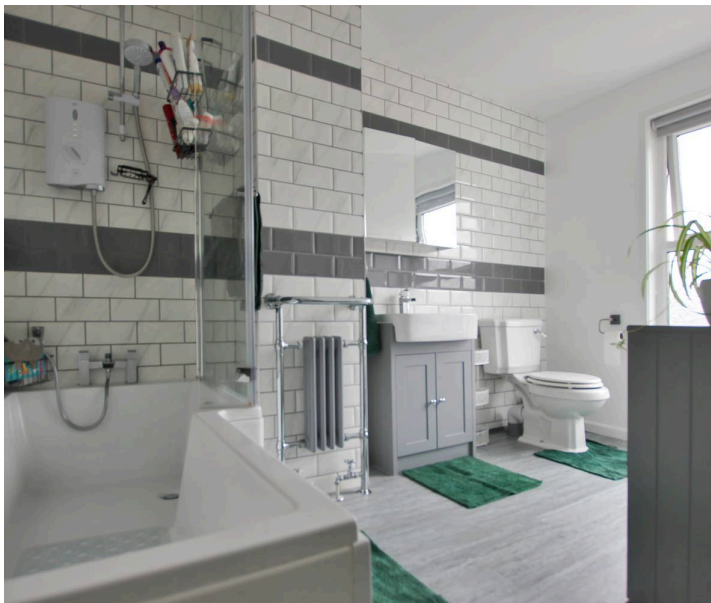
13' 0" x 11' 1" (3.96m x 3.37m)

**Bathroom**

8' 2" x 11' 1" (2.50m x 3.37m)

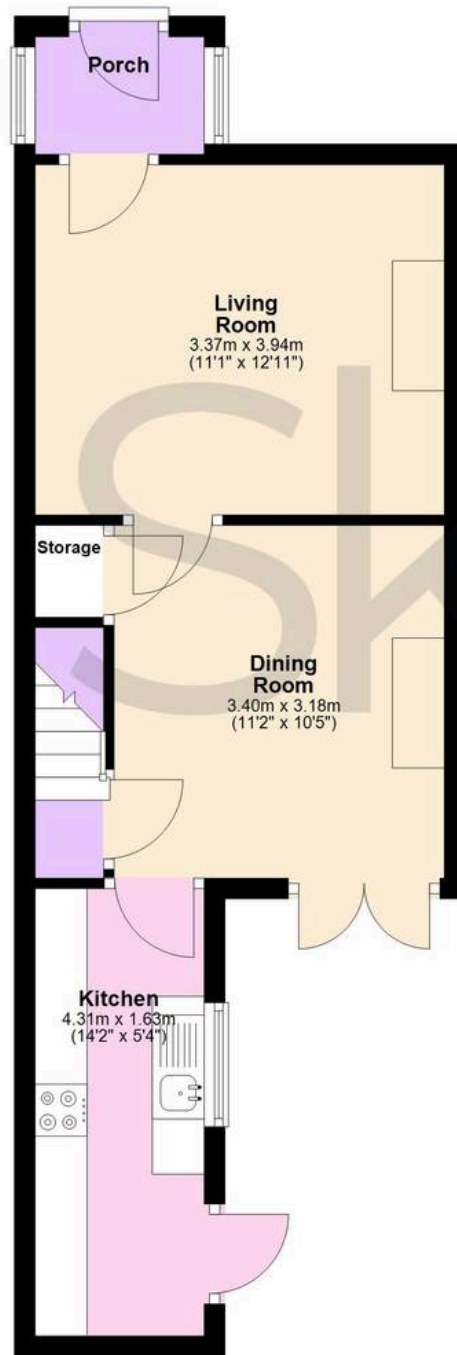
**Bedroom**

11' 9" x 11' 5" (3.59m x 3.48m)



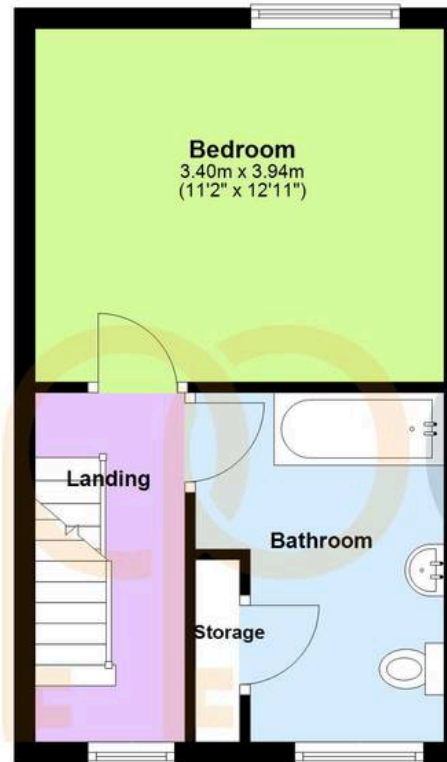
## Ground Floor

Approx. 36.2 sq. metres (390.1 sq. feet)



## First Floor

Approx. 27.1 sq. metres (291.3 sq. feet)



## Second Floor

Approx. 14.3 sq. metres (153.5 sq. feet)





## Skippers Estate Agents New Romney

55 High Street - TN28 8AH

01797 362898

Skippers