



321 Beaver Lane, Ashford

Offers Over **£265,000**

321 Beaver Lane

Ashford, Ashford

A spacious three-bedroom townhouse, with accommodation spanning three floors and enjoying a garage and driveway parking for 2 cars, benefiting from a utility room and cloakroom on the ground floor and rear garden.

Council Tax band: B

Tenure: Freehold

- Three bedroom townhouse
- Low maintenance enclosed garden to the rear
- Kitchen & Living Room on first floor
- Garage & Driveway parking for 2 cars
- WC and Utility on the ground floor
- Three Bedrooms & Bathroom on second floor



Hallway

Wooden door to the front, storage cupboard, stairs to the first floor, door leading to Utility, fitted carpet.

Utility Room

7' 7" x 12' 4" (2.30m x 3.77m)

Door to the garden and window to the rear, sink unit, space and plumbing for washing machine and tumble dryer, under stairs storage cupboard.

Wc

Window to the rear, WC.

First Floor

Door into kitchen.

Kitchen

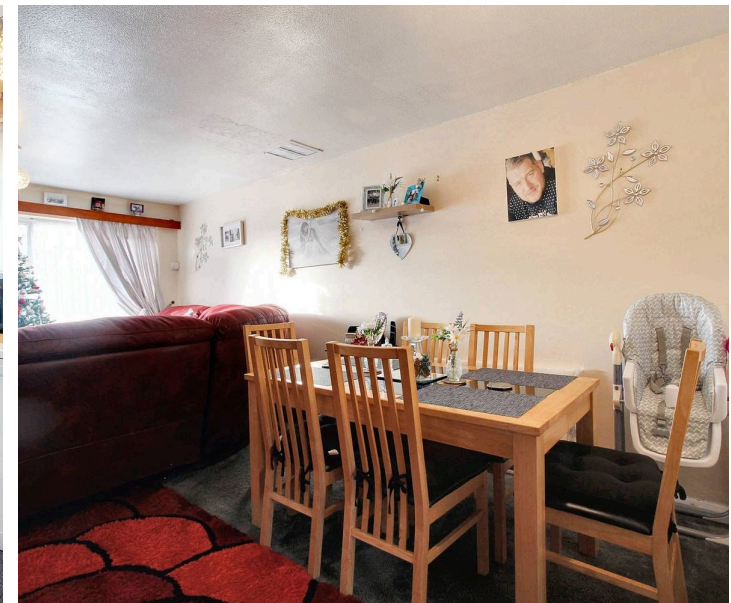
9' 8" x 15' 3" (2.94m x 4.66m)

Windows to the rear, stainless steel sink unit with sink and double drainer, two pantry cupboards, gas pipe for cooker/boiler, space and plumbing for a dishwasher, space for free-standing fridge/freezer. Fitted carpet.

Lounge/Diner

18' 11" x 14' 8" (5.76m x 4.47m)

Windows to the front, stairs to the second floor, fitted carpet.





Second Floor Landing

Doors to each room, storage cupboard, carpet fitted to the stairs and landing.

Bedroom 1

14' 11" x 8' 8" (4.55m x 2.64m)

Window to the front, built-in wardrobes, fitted carpet.

Bedroom 2

14' 6" x 8' 8" (4.42m x 2.64m)

Window to the rear, built-in wardrobe, fitted carpet.

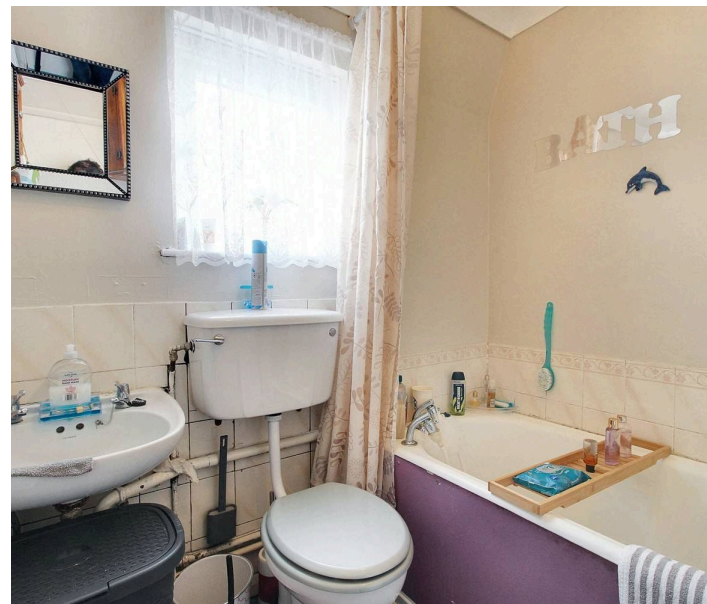
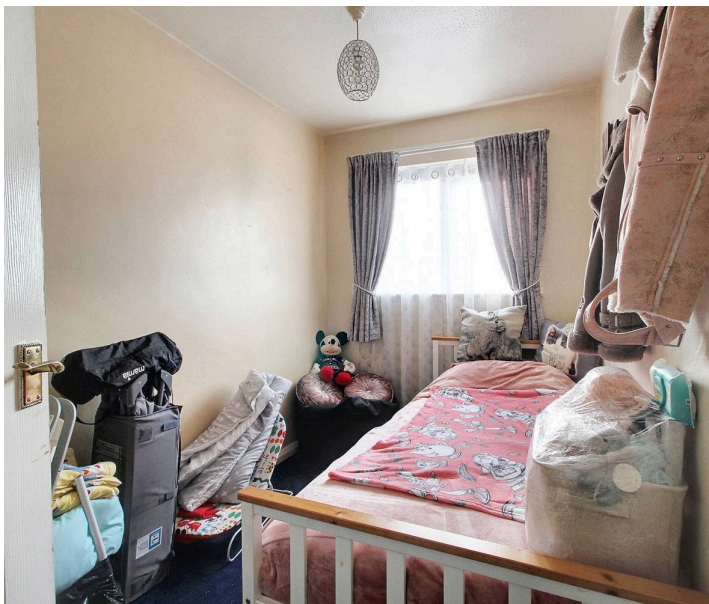
Bedroom 3

10' 2" x 6' 2" (3.11m x 1.88m)

Window to the front, fitted carpet.

Bathroom

Comprising a bath with taps, WC, wash basin, partly tiled walls and vinyl flooring.



GARDEN

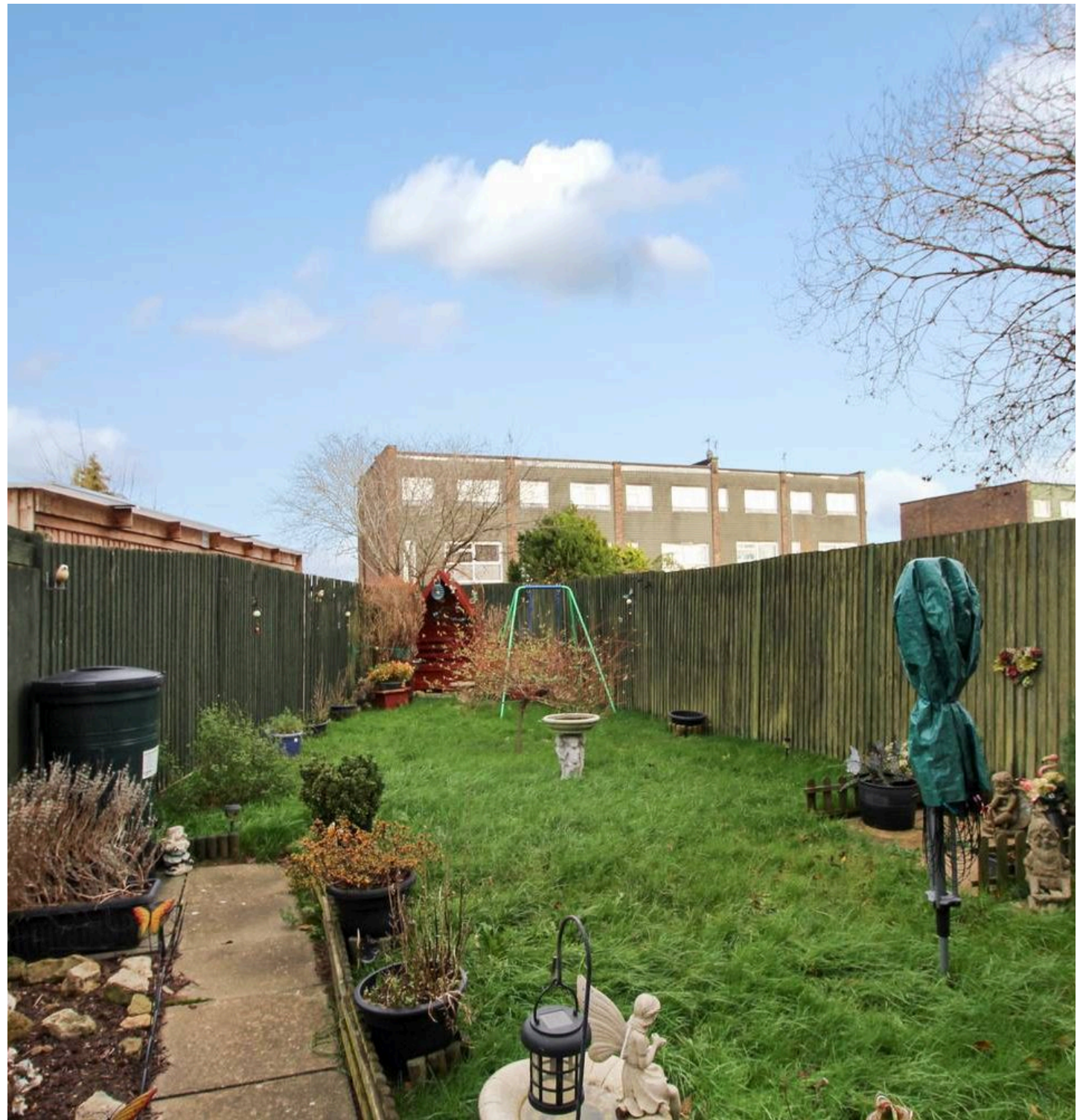
Enclosed garden to the rear with gated rear access, mostly laid to lawn with patio space adjacent to the rear of the house.

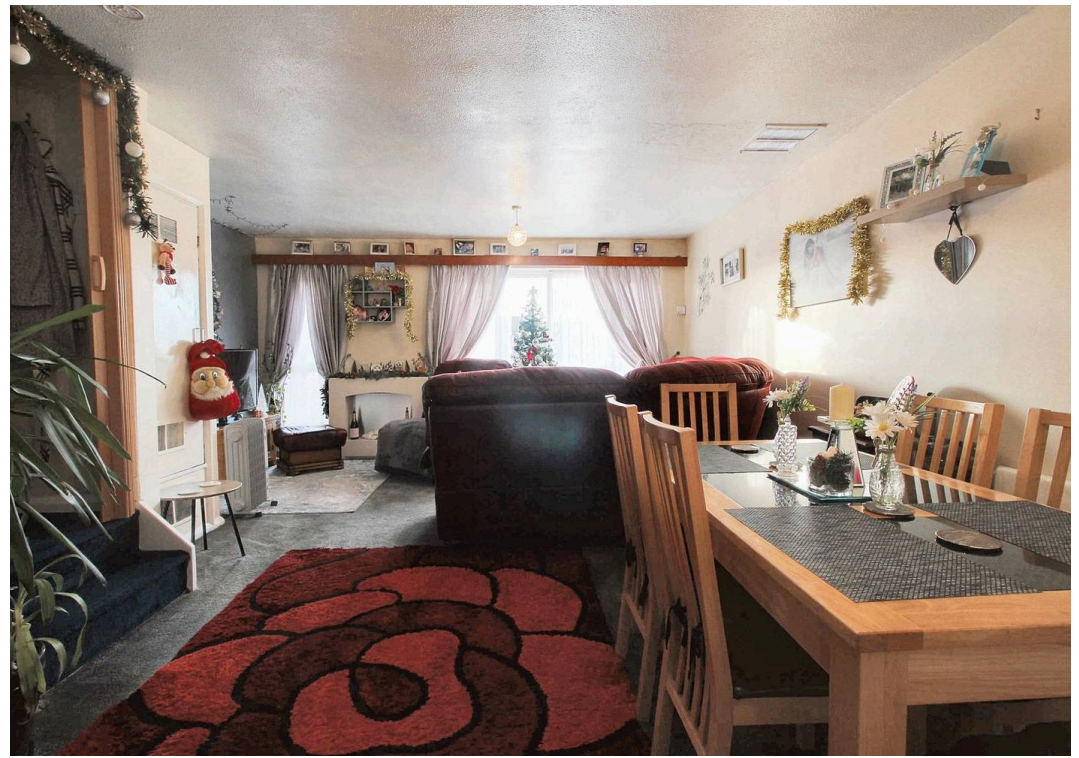
GARAGE

Single Garage

DRIVEWAY

2 Parking Spaces

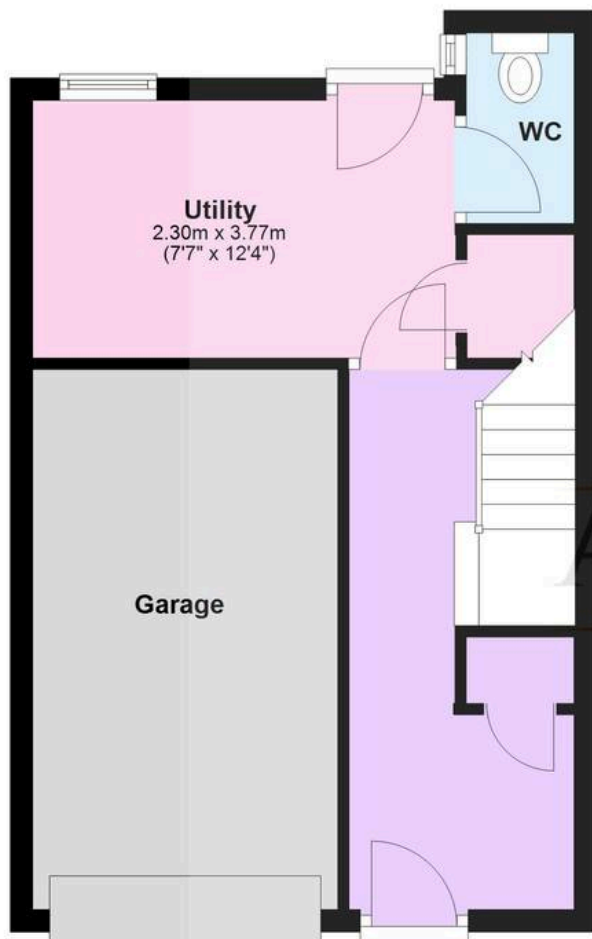






Ground Floor

Approx. 24.9 sq. metres (268.3 sq. feet)



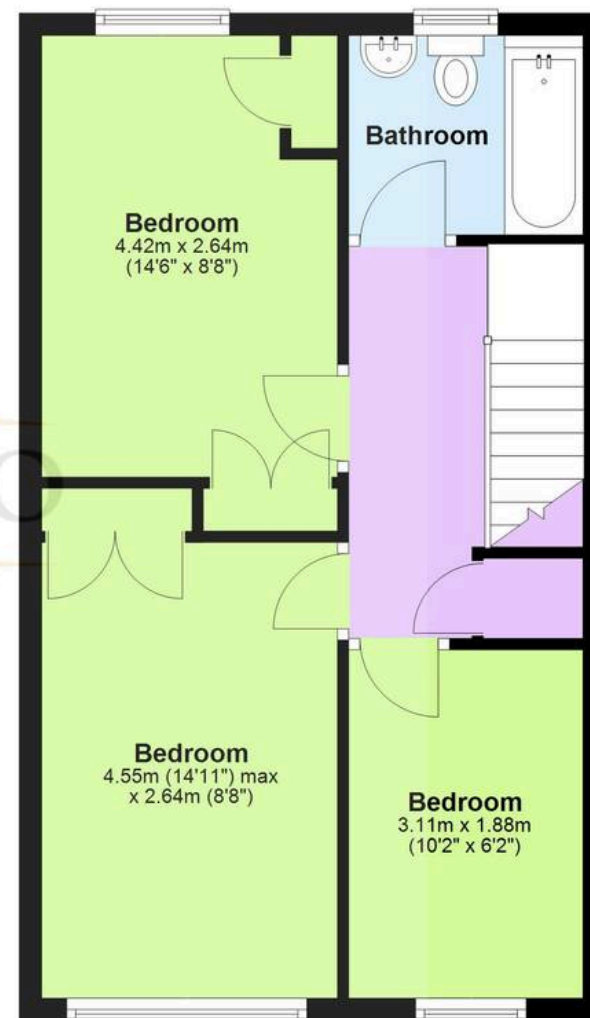
First Floor

Approx. 40.7 sq. metres (438.6 sq. feet)



Second Floor

Approx. 40.8 sq. metres (439.7 sq. feet)



Total area: approx. 106.5 sq. metres (1146.6 sq. feet)