



Station Road, Lydd

Romney Marsh

£290,000



Station Road

Lydd, Romney Marsh

Sizeable 3-bed semi-detached home in Lydd with refurbishment potential. Features spacious living room, kitchen with dining area, 3 bedrooms, front & rear gardens, garage, off-street parking. Close to town amenities and beach. Contact us to view!

Council Tax band: C

Tenure: Freehold

EPC Energy Efficiency Rating: D

EPC Environmental Impact Rating: D

- Three Bedroom
- Semi Detached House
- Large Living Room
- Kitchen/Diner
- In Need of Updating
- Generous Garden
- Garage and Off Street Parking



Entrance Hall

Living Room

16' 10" x 12' 7" (5.13m x 3.83m)

Garden Room

16' 5" x 6' 8" (5.00m x 2.02m)

Kitchen

16' 10" x 8' 11" (5.13m x 2.73m)

Shower Room

Landing

Bedroom

12' 7" x 9' 7" (3.83m x 2.91m)

Bedroom

10' 1" x 9' 2" (3.07m x 2.79m)

Bedroom

8' 11" x 6' 11" (2.72m x 2.12m)

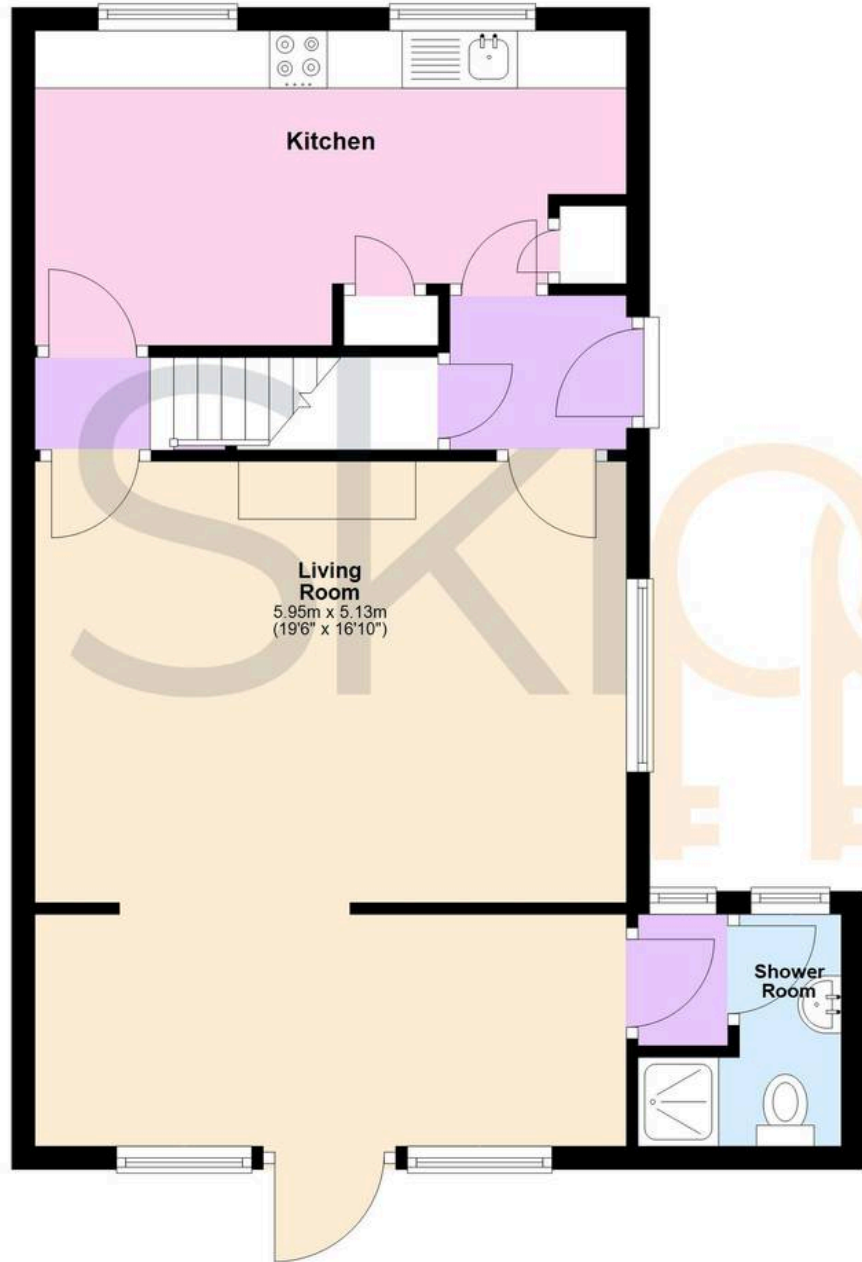
Bathroom

Garage



Ground Floor

Approx. 53.4 sq. metres (574.9 sq. feet)



First Floor

Approx. 39.0 sq. metres (420.2 sq. feet)



Total area: approx. 92.4 sq. metres (995.1 sq. feet)



Skippers Estate Agents – New Romney

Andrew & Co, 55 High Street – TN28 8AH

01797 362898

newromney@skippers-ea.co.uk

skippers-ea.co.uk

Skippers