



Redoubt Way, Dymchurch

Romney Marsh

£425,000



Redoubt Way

Dymchurch, Romney Marsh

Stunning detached house in Dymchurch with 3 bedrooms, modern kitchen, superb garden room, and off-road parking. Close to local amenities and sea walks. Perfect inside/outside living. View now!

Council Tax band: D

Tenure: Freehold

EPC Energy Efficiency Rating: E

EPC Environmental Impact Rating: E

- Spacious Home
- Ground Floor Bedroom
- Lots of Living Space
- Superb Family Living Space
- All Double Bedrooms
- Private Garden
- Ideal for Multi Generational Living



Entrance Hall

Living Room

16' 0" x 11' 5" (4.89m x 3.49m)

Family Lounge

11' 0" x 11' 11" (3.36m x 3.64m)

Rear Kitchen/Diner

11' 8" x 10' 11" (3.56m x 3.34m)

Kitchen

8' 11" x 11' 5" (2.72m x 3.49m)

Bedroom

7' 10" x 11' 11" (2.38m x 3.64m)

Boot Room

Shower Room

Side Porch

Wc

Landing

Bedroom

12' 11" x 9' 0" (3.93m x 2.75m)

Bedroom

13' 1" x 9' 4" (4.00m x 2.85m)

Bathroom

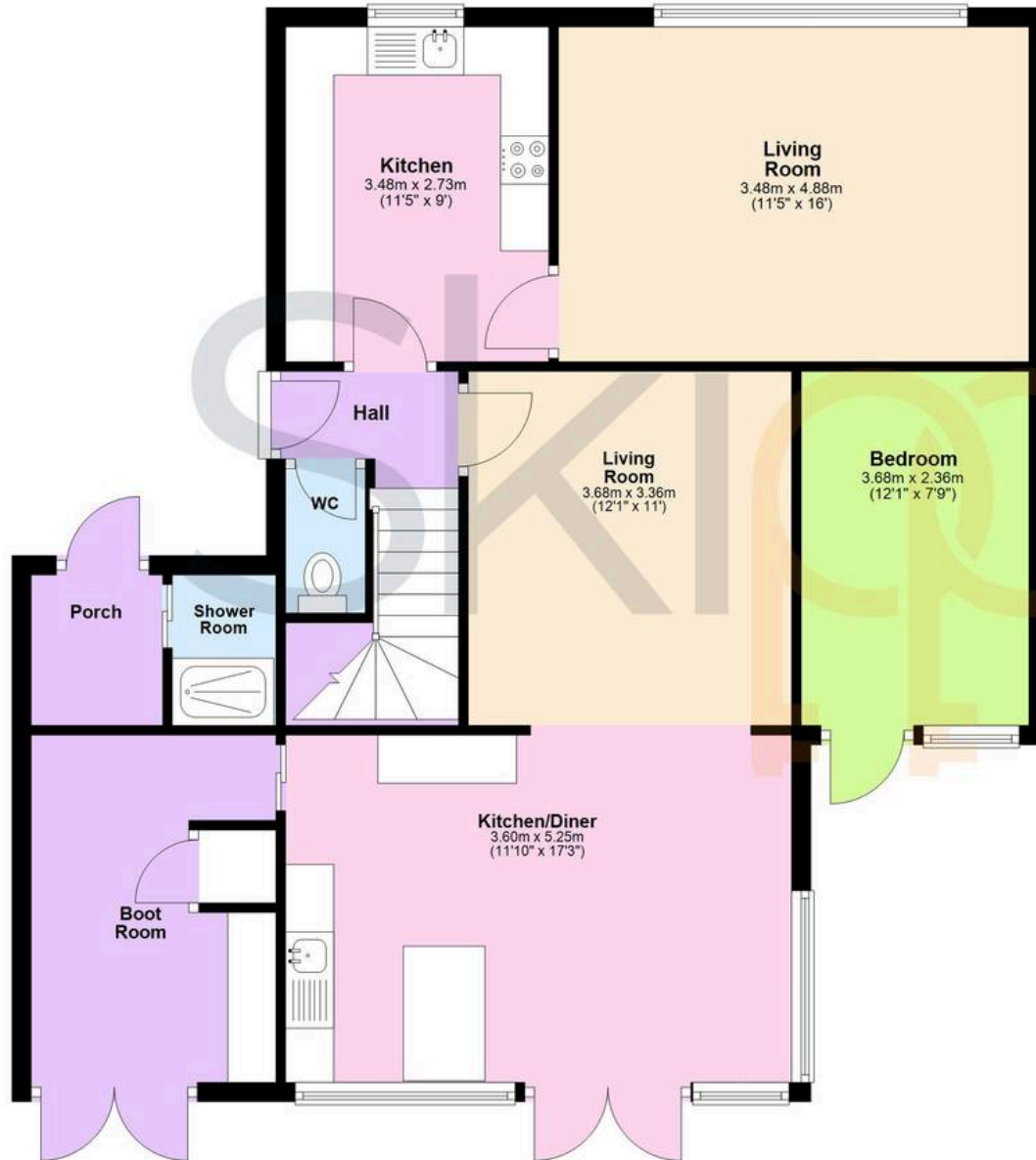
Storage Cupboard





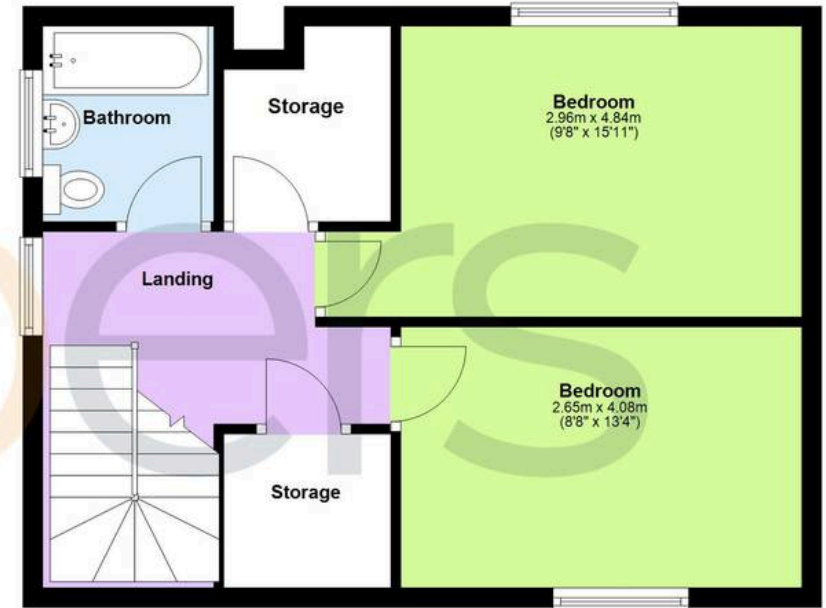
Ground Floor

Approx. 89.3 sq. metres (961.4 sq. feet)



First Floor

Approx. 43.6 sq. metres (469.7 sq. feet)



Total area: approx. 133.0 sq. metres (1431.1 sq. feet)



Skippers Estate Agents - New Romney

55 High Street - TN28 8AH

01797 362898

newromney@skippers-ea.co.uk

skippers-ea.co.uk

Skippers