



12 Bath Mews Bath Road, Willesborough
£140,000

12 Bath Mews Bath Road

Willesborough, Ashford

A one-bedroom first-floor maisonette, enjoying a small garden, off-road parking and is offered for sale with no onward chain, making this a perfect investment purchase for buy-to-let.

Council Tax band: B

Tenure: Leasehold

- One-bedroom maisonette
- Small garden to the front
- Off-road parking for one car
- Generously proportioned bedroom
- Lounge with separate kitchen
- Walking distance to the International Station
- Perfect investment opportunity



Ground floor entrance hall

First floor landing

Lounge

11' 9" x 13' 4" (3.57m x 4.07m)

Kitchen

7' 4" x 4' 8" (2.24m x 1.43m)

Bedroom

10' 10" x 10' 0" (3.30m x 3.06m)

Bathroom



GARDEN

OFF ROAD

1 Parking Space







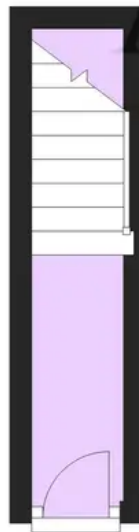
First Floor

Approx. 37.2 sq. metres (400.7 sq. feet)



Ground Floor

Approx. 3.6 sq. metres (38.4 sq. feet)



Total area: approx. 40.8 sq. metres (439.1 sq. feet)

Plans are for layout purposes only and are not drawn to scale, with any doors, windows and other internal features merely intended as a guide.

Plan produced using PlanUp.

These particulars are intended to give a fair and reliable description of the property but no responsibility for any inaccuracy or error can be accepted and do not constitute an offer or contract. We have not tested any services or appliances (including central heating if fitted) referred to in these particulars and purchasers are advised to satisfy themselves as to the working order and condition. If a property is unoccupied at any time there may be reconnection charges for any switched off/disconnected or drained services or appliances. All measurements are approximate.

Andrew & Co Estate Agents - Ashford

01233 632383

info@andrewandco.co.uk

