



Station Road, Lydd

Romney Marsh

£325,000



Station Road

Lydd, Romney Marsh

Charming 3-bed terraced house in Lydd town. Modern kitchen, private garden with deck, garage, and parking. Close to amenities and transport links. Size: 892.5 sqft. Ready to move in, ideal for first-time buyers or families.

Council Tax band: C

Tenure: Freehold

EPC Energy Efficiency Rating: C

EPC Environmental Impact Rating: C

- Three Bedroom
- Family Home
- Large Living Room
- Modern Kitchen/Diner
- Garage
- Central Location



Entrance Porch

Living Room

17' 7" x 11' 5" (5.35m x 3.47m)

Kitchen/Diner

17' 7" x 8' 11" (5.35m x 2.71m)

Landing

Bedroom

11' 6" x 10' 3" (3.50m x 3.13m)

Bedroom

8' 4" x 7' 1" (2.54m x 2.17m)

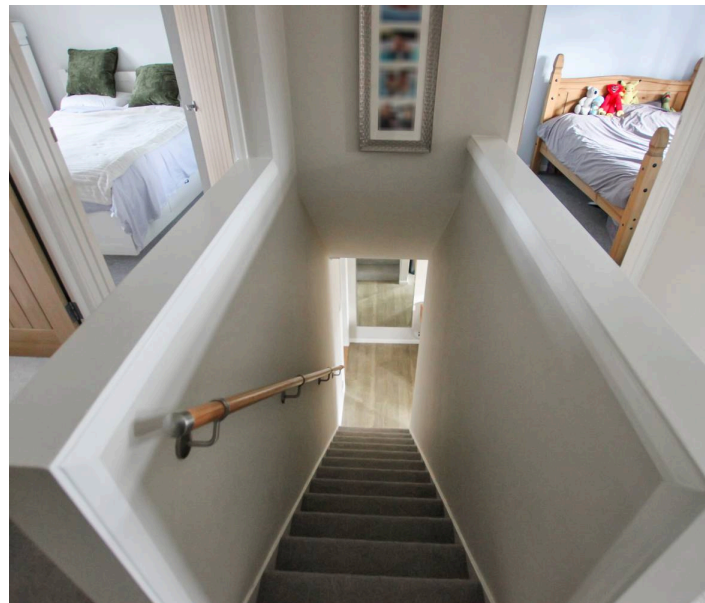
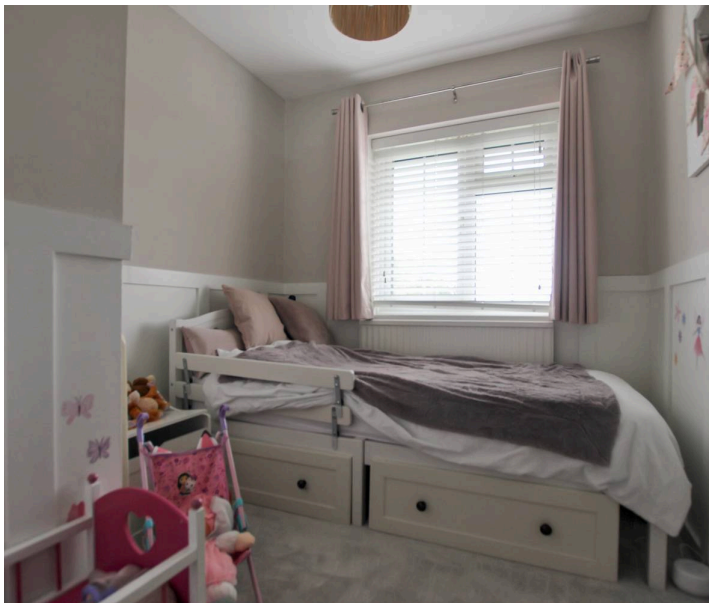
Bedroom

12' 2" x 8' 7" (3.70m x 2.61m)

Wc

Bathroom

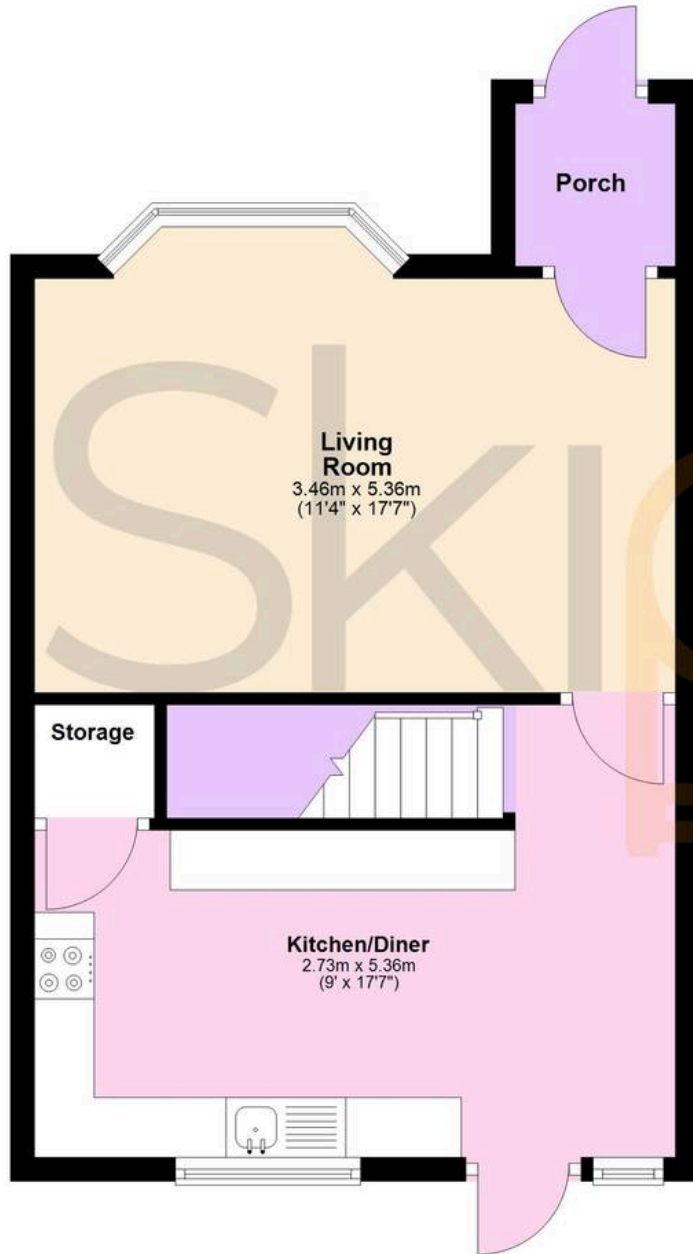
Garage





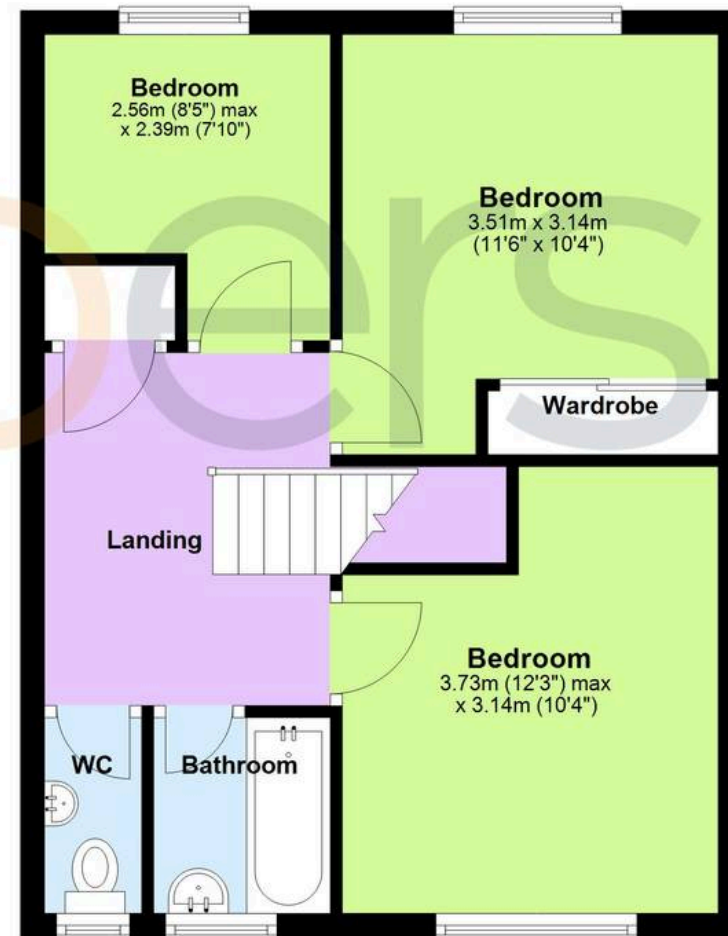
Ground Floor

Approx. 41.6 sq. metres (447.8 sq. feet)



First Floor

Approx. 41.3 sq. metres (444.7 sq. feet)



Total area: approx. 82.9 sq. metres (892.5 sq. feet)



Skippers Estate Agents - New Romney

55 High Street - TN28 8AH

01797 362898

newromney@skippers-ea.co.uk

skippers-ea.co.uk

Skippers