



4 Bluebell Road, Kingsnorth
£475,000

4 Bluebell Road

Kingsnorth, Ashford

A well-presented four-bedroom detached family home, benefiting from a double garage and driveway parking, enclosed garden to the rear, en-suite and fitted wardrobes to bedroom 1, convenient location close to amenities and available with no onward chan.

Council Tax band: E

Tenure: Freehold

- Four bedroom detached family home
- Double garage and Driveway parking
- En-suite and fitted wardrobes to Bedroom 1
- Lovely enclosed rear garden
- Walking distance to both Furley Park & Kingsnorth Primary Schools
- Close-by to numerous childrens play parks, Kingsnorth Recreation Ground and countryside walks
- Tesco superstore only a 15 minute walk away
- Good road links close by with the A2070 and M20 within easy reach



Hallway

Part glazed uPVC door to the front, stairs to the first floor, radiator, laminate wood flooring.

Study

Window to the front, radiator, laminate wood flooring.

Lounge

Sliding doors leading to the garden, gas fire, radiator, fitted carpet.

Dining Room

Window to the rear, radiator, fitted carpet. Leads through to Lounge and Utility Room.

Kitchen

Comprising wooden wall and base units with worksurfaces over, inset 1.5 bowl sink/drain, built-in electric double oven, 4-ring ceramic hob and extractor hood, integrated fridge/freezer & dishwasher. Tiled splashback and laminate wood flooring. Radiator, under-stairs cupboard and window to the front.

Utility Room

Under-sink cupboard with worksurface over and inset sink/drain, plumbing and space for washing machine, wall-mounted central heating boiler, radiator, laminate wood flooring. Part glazed uPVC door to the garden.

Wc

Comprising a WC, wash basin with storage beneath, radiator, extractor fan, laminate wood flooring.

Landing

Loft access with pull-down ladder, doors to each room, fitted carpet to the stairs and landing.





Bedroom 1

Window to the front, built-in and fitted wardrobes, radiator, fitted carpet.

En Suite

Comprising a square shower enclosure with thermostatically controlled shower and folding door, WC, wash basin with storage beneath, extractor fan, towel radiator, tiled walls, laminate wood flooring. Window to the front.

Bedroom 2

Window to the rear, built-in wardrobes, radiator, fitted carpet.

Bedroom 3

Window to the rear, built-in wardrobes, radiator, fitted carpet.

Bedroom 4

Window to the front, radiator, fitted carpet.

Bathroom

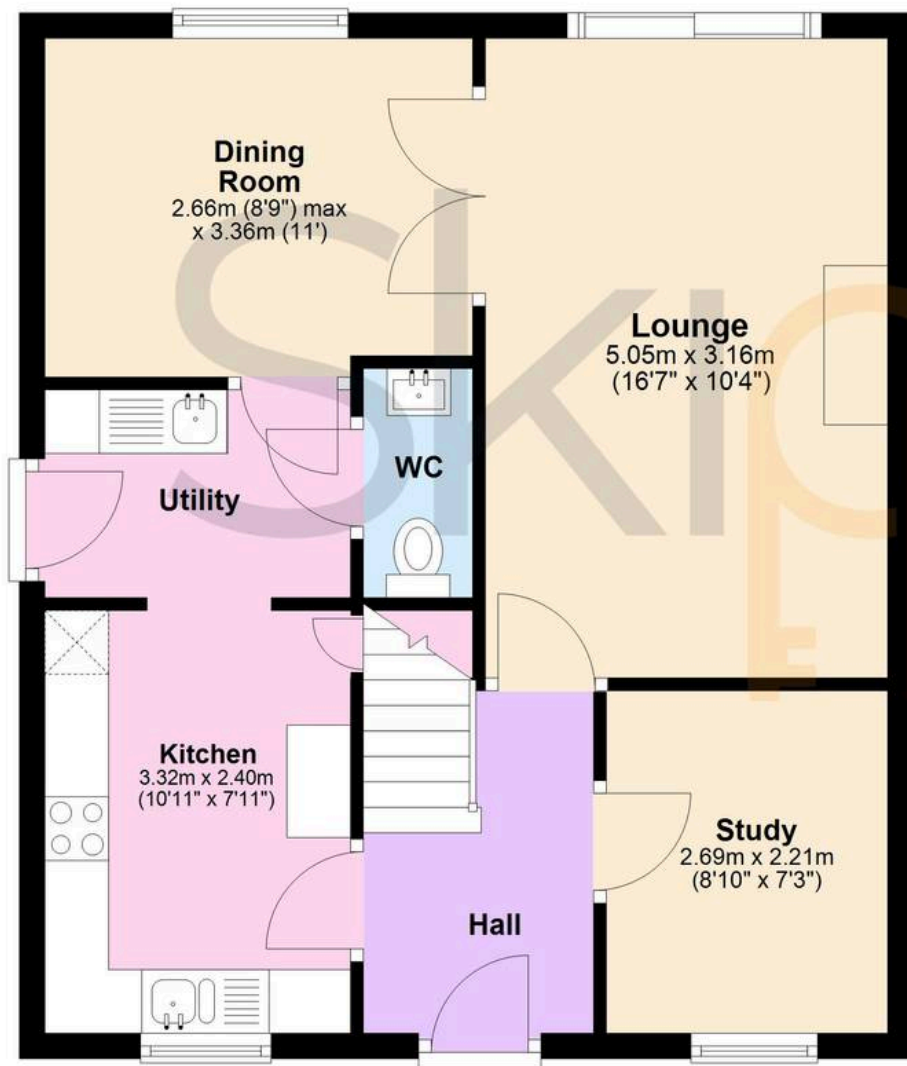
Comprising a bath with mixer taps, thermostatically controlled shower and folding glass shower screen, WC, wash basin with storage beneath, extractor fan, towel radiator, tiled walls and laminate wood flooring. Window to the side.





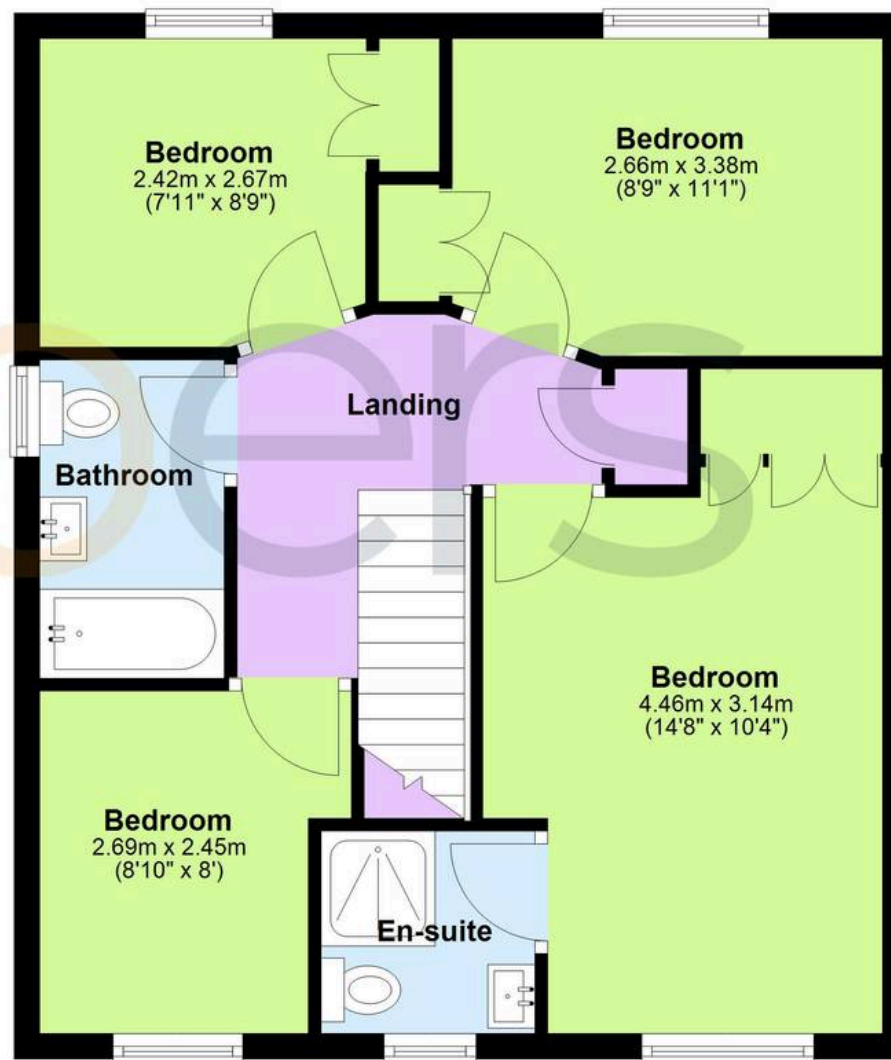
Ground Floor

Approx. 50.6 sq. metres (544.5 sq. feet)



First Floor

Approx. 51.7 sq. metres (556.5 sq. feet)



Total area: approx. 102.3 sq. metres (1101.0 sq. feet)



Skippers Estate Agents – Ashford

5 Kings Parade High Street, Ashford – TN24 8TA

01233 632383

ashford@skippers-ea.co.uk

skippers-ea.co.uk

Skippers

