



16 Foxglove Green, Willesborough
£250,000

16 Foxglove Green

Willesborough, Ashford

Charming 2-bed mid-terraced house in Willesborough. Ideal for first-time buyers or investors. Convenient location near amenities and schools, with garage, garden, and modern features. Council Tax band: B

Tenure: Freehold

- 2 Double bedrooms
- Great first time buyer home
- Popular Willesborough location
- Convenient location for Ashford town and International Station
- Walking distance to primary and secondary schools including a grammar
- Double glazed windows and doors
- Modern bathroom with electric shower over bath with hand held hair wash attachment.
- Garden laid to lawn with well established shrubs, patio area and gated access to rear.
- Garage en bloc



Porch

uPVC door to the front, cupboard housing utility meters, fitted carpet.

Hallway

Stairs leading to first floor with under-stairs storage, radiator, fitted carpet.

Kitchen

Comprising wall and base units with worksurfaces over, inset sink/drain, free-standing electric cooker, space and plumbing for washing machine, space for fridge/freezer. Tiled splash back, vinyl flooring. Window to the front.

Lounge/Diner

Window to the rear and doors leading to the garden, fireplace with electric fire, radiator and fitted carpet.

Landing

Loft access, airing cupboard, fitted carpet.

Bedroom 1

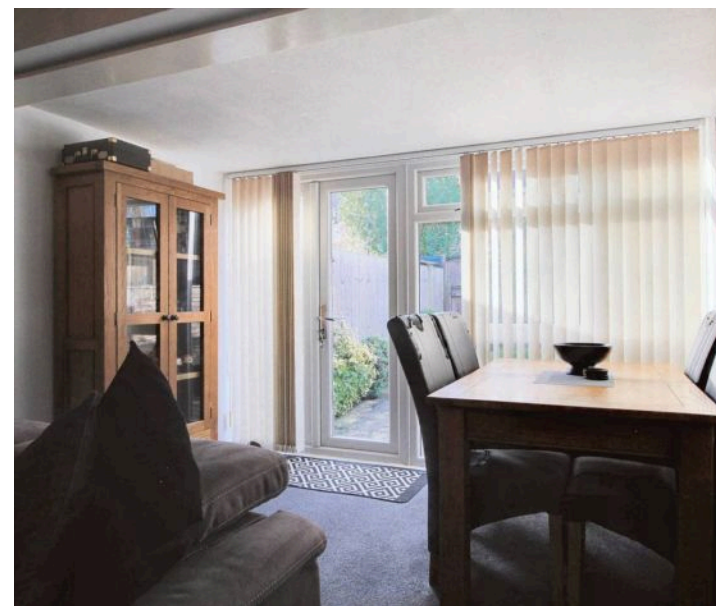
Window to the rear, radiator, fitted carpet.

Bedroom 2

Window to the front, radiator, fitted carpet. Cupboard over the stairs.

Bathroom

Comprising a bath with mixer taps, electric shower over and glass shower screen, WC, wash basin, towel radiator, extractor fan, tiled walls and vinyl flooring.



Porch

uPVC door to the front, cupboard housing utility meters, fitted carpet.

Hallway

Stairs leading to first floor with under-stairs storage, radiator, fitted carpet.

Kitchen

Comprising wall and base units with worksurfaces over, inset sink/drainage, free-standing electric cooker, space and plumbing for washing machine, space for fridge/freezer. Tiled splash back, vinyl flooring. Window to the front.

Lounge/Diner

Window to the rear and doors leading to the garden, fireplace with electric fire, radiator and fitted carpet.

Landing

Loft access, airing cupboard, fitted carpet.

Bedroom 1

Window to the rear, radiator, fitted carpet.

Bedroom 2

Window to the front, radiator, fitted carpet. Cupboard over the stairs.

Bathroom

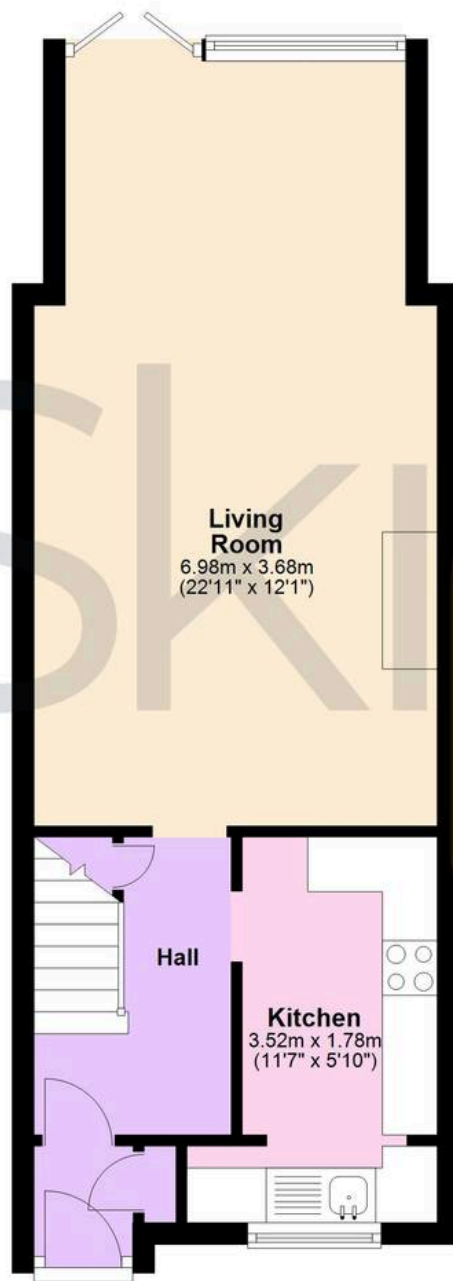
Comprising a bath with mixer taps, electric shower over and glass shower screen, WC, wash basin, towel radiator, extractor fan, tiled walls and vinyl flooring.





Ground Floor

Approx. 29.1 sq. metres (313.7 sq. feet)



First Floor

Approx. 28.1 sq. metres (302.9 sq. feet)



Total area: approx. 57.3 sq. metres (616.6 sq. feet)



Skippers Estate Agents – Ashford

5 Kings Parade High Street, Ashford – TN24 8TA

01233 632383

ashford@skippers-ea.co.uk

skippers-ea.co.uk



