



51 Lower Vicarage Road, Kennington

Offers in Region of **£265,000**

Skippers

51 Lower Vicarage Road

Kennington, Ashford

Charming 2-bed mid-terraced home in Kennington with no chain. Cosy interior, modern kitchen, and convenient amenities. Lovely garden with patio and shed. Parking and easy access to town centre. Ideal for creating memories.

Council Tax band: C

Tenure: Freehold

- NO ONWARD CHAIN
- Attractive Extended Cottage
- 2 Bedrooms
- Driveway Parking for 1 car or 2 smaller cars
- Lower Vicarage Road Location within Kennington
- Rear Garden with brick built shed
- First Floor Bathroom & Ground Floor Cloakroom
- Convenient Location for amenities including local Schooling & public transport links to Town Centre



Porch

With door leading to lounge.

Lounge

12' 9" x 11' 1" (3.89m x 3.38m)

Carpeted with window to front, electric fire in feature surround, exposed beams and open through to dining room.

Dining Area

12' 9" x 8' 7" (3.89m x 2.62m)

Carpeted with stairs to first floor, understairs recess and access to kitchen.

Kitchen

13' 8" x 12' 9" (4.17m x 3.89m)

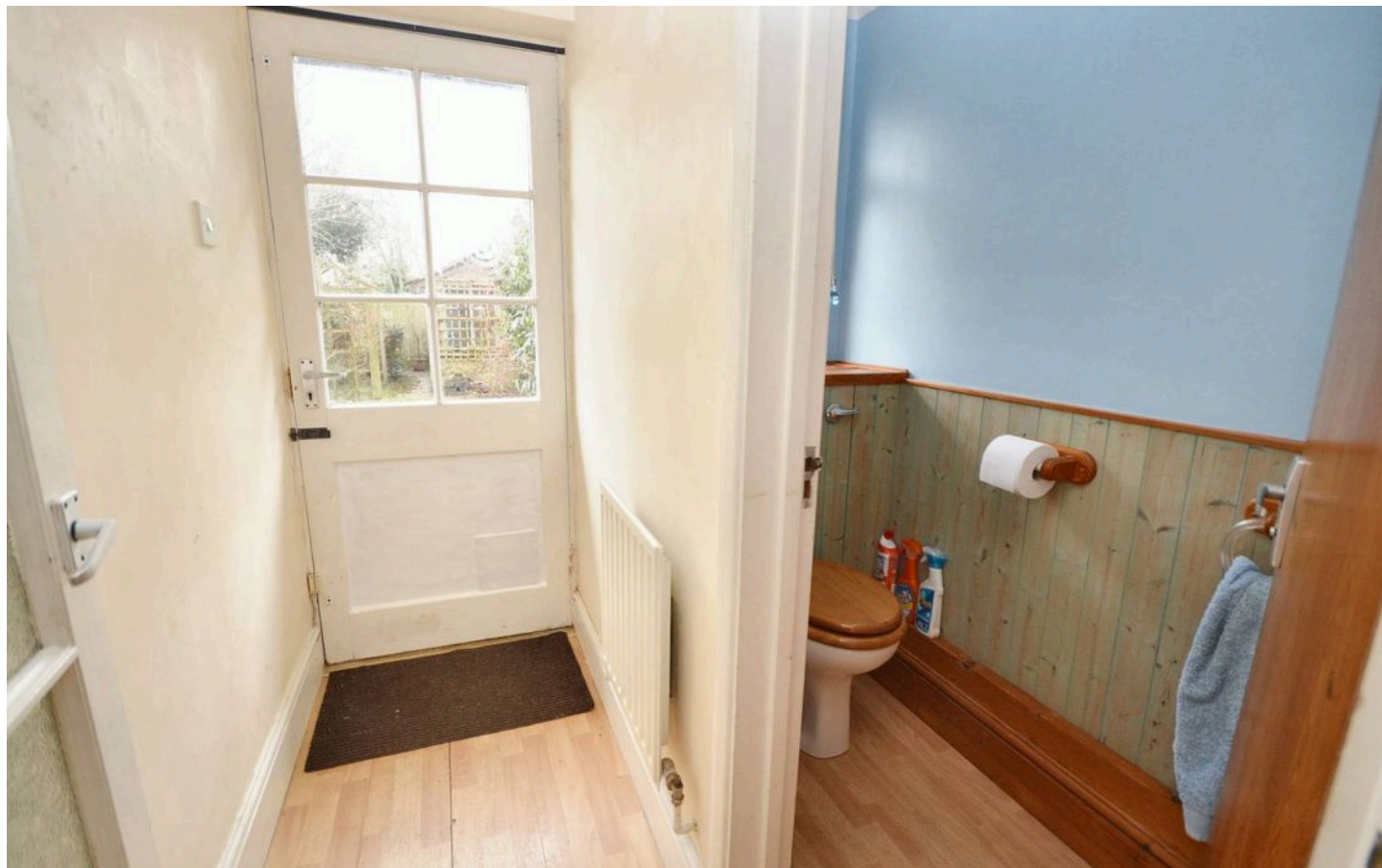
Range of cupboards and drawers beneath work surfaces with added wall mounted units, window outlook to rear, stainless steel sink with mixer tap and drainer, locally tiled walls, space and plumbing for washing machine and dishwasher, space for freestanding oven, breakfast bar and door leading through to rear lobby.

Rear Lobby

With doors leading to garden and cloakroom.

Cloakroom

Low level wc, wash hand basin and window to rear.





Landing

Storage cupboard and doors leading through to bedrooms and bathroom.

Bedroom

12' 9" x 10' 10" (3.89m x 3.30m)

Window to front, exposed brick wall, 2 built in wardrobes.

Bedroom

12' 9" x 8' 4" (3.89m x 2.54m)

Carpeted with 2 windows to rear and 2 built in wardrobes.

Bathroom

White suite comprising low level wc, wash hand basin and panelled bath with mixer tap and shower over, locally tiled walls.

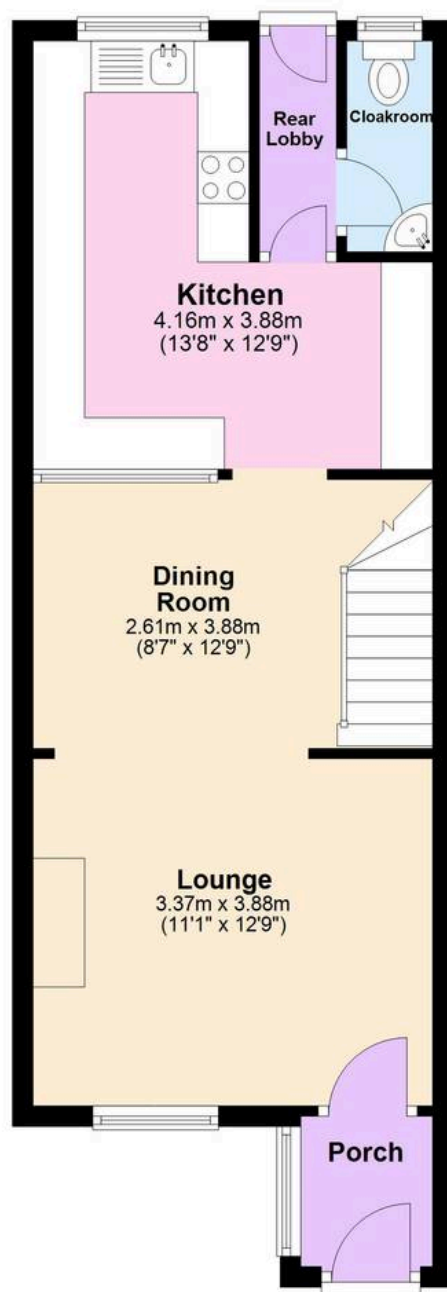






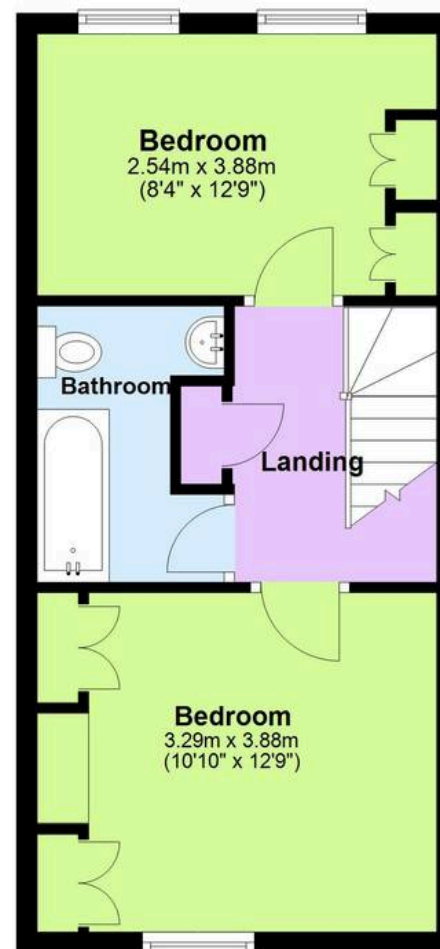
Ground Floor

Approx. 42.1 sq. metres (453.2 sq. feet)



First Floor

Approx. 33.8 sq. metres (364.1 sq. feet)



Total area: approx. 75.9 sq. metres (817.3 sq. feet)



Skippers Estate Agents – Ashford

5 Kings Parade High Street, Ashford – TN24 8TA

01233 632383

ashford@skippers-ea.co.uk

skippers-ea.co.uk

Skippers

