



Flat 5, Fulmer House Cedar Crescent, St. Marys Bay

Romney Marsh

Leasehold £225,000



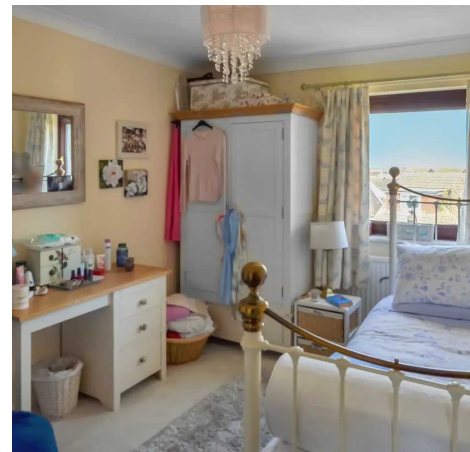
# Flat 5

Fulmer House Cedar Crescent, Romney Marsh

Much cared for, spacious top floor apartment offering great sea view from the kitchen and living room. This fantastic home really needs to be seen to appreciate the what is on offer.

Tenure: Leasehold

- Sea Views
- Top Floor
- Two Bedrooms
- Balcony
- Large Living Room
- Pantry
- Garage





### Inner Hallway

### Living Room

16' 3" x 16' 3" (4.95m x 4.95m)

### Kitchen

7' 2" x 9' 12" (2.19m x 3.04m)

### Pantry

### Bedroom

10' 9" x 13' 3" (3.28m x 4.03m)

### Bedroom

10' 9" x 9' 0" (3.28m x 2.75m)

### Bathroom

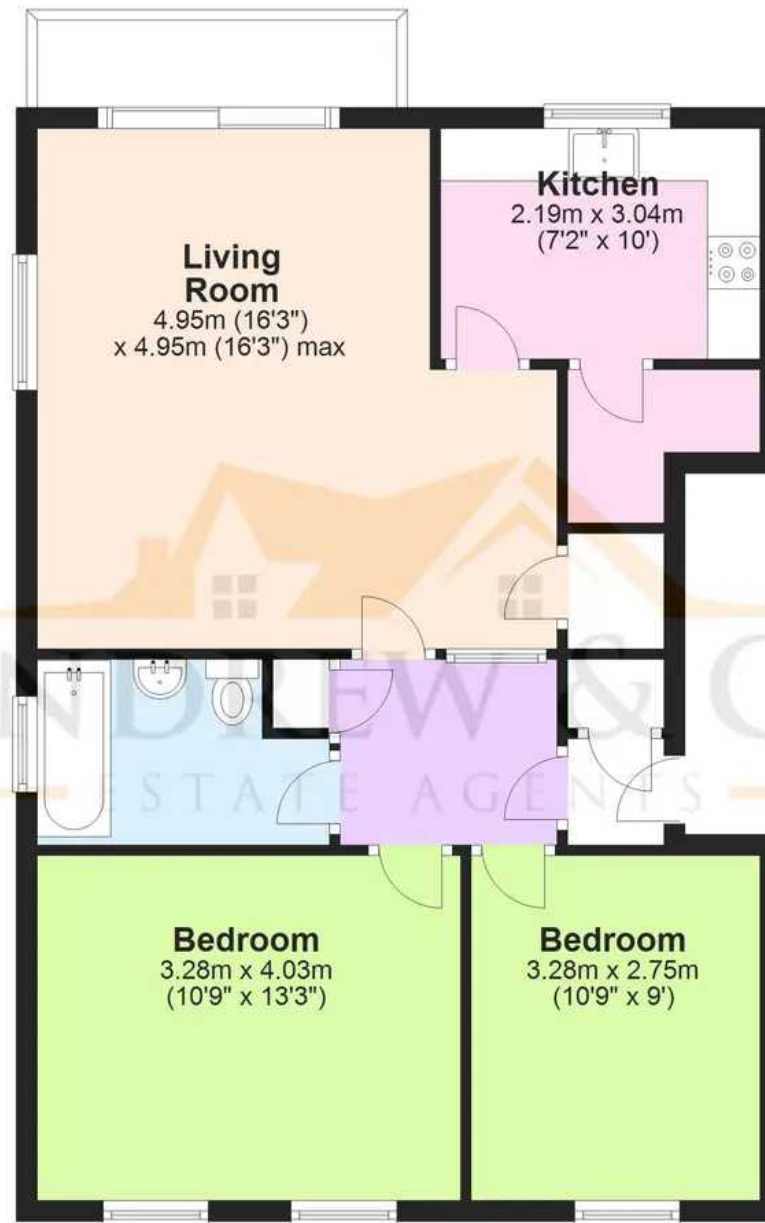






## Second Floor

Approx. 66.7 sq. metres (718.0 sq. feet)



Total area: approx. 66.7 sq. metres (718.0 sq. feet)

Plans are for layout purposes only and are not drawn to scale, with any doors, windows and other internal features merely intended as a guide.  
Plan produced using PlanUp.



These particulars are intended to give a fair and reliable description of the property but no responsibility for any inaccuracy or error can be accepted and do not constitute an offer or contract. We have not tested any services or appliances (including central heating if fitted) referred to in these particulars and purchasers are advised to satisfy themselves as to the working order and condition, if a property is unoccupied at any time there may be reconnection charges for any switched off/disconnected or drained services or appliances. All measurements are approximate.



**Andrew & Co Estate Agents - New Romney**

01797 362898

[newromney@andrewandco.co.uk](mailto:newromney@andrewandco.co.uk)

