



**83 Cleves Way, Ashford**

Offers in Region of **£260,000**

**Skippers**

# 83 Cleves Way

Ashford

3 Bed Semi-Detached family home with NO ONWARD CHAIN in sought-after South Ashford. The property benefits from a lovely large garden and potential for modernisation. Book your viewing today.  
Council Tax band: B

Tenure: Freehold

- NO ONWARD CHAIN
- 2 Receptions (Lounge & Dining Room)
- South Ashford Location
- 3 Bedroom End Terraced Family Home
- Lovely Large Rear Garden



**Entrance Hallway**

With under stairs storage cupboard

**Lounge**

18' 3" x 10' 6" (5.56m x 3.20m)

Double aspect with window to front and double doors to rear garden.

**Dining Room**

14' 1" x 9' 1" (4.29m x 2.77m)

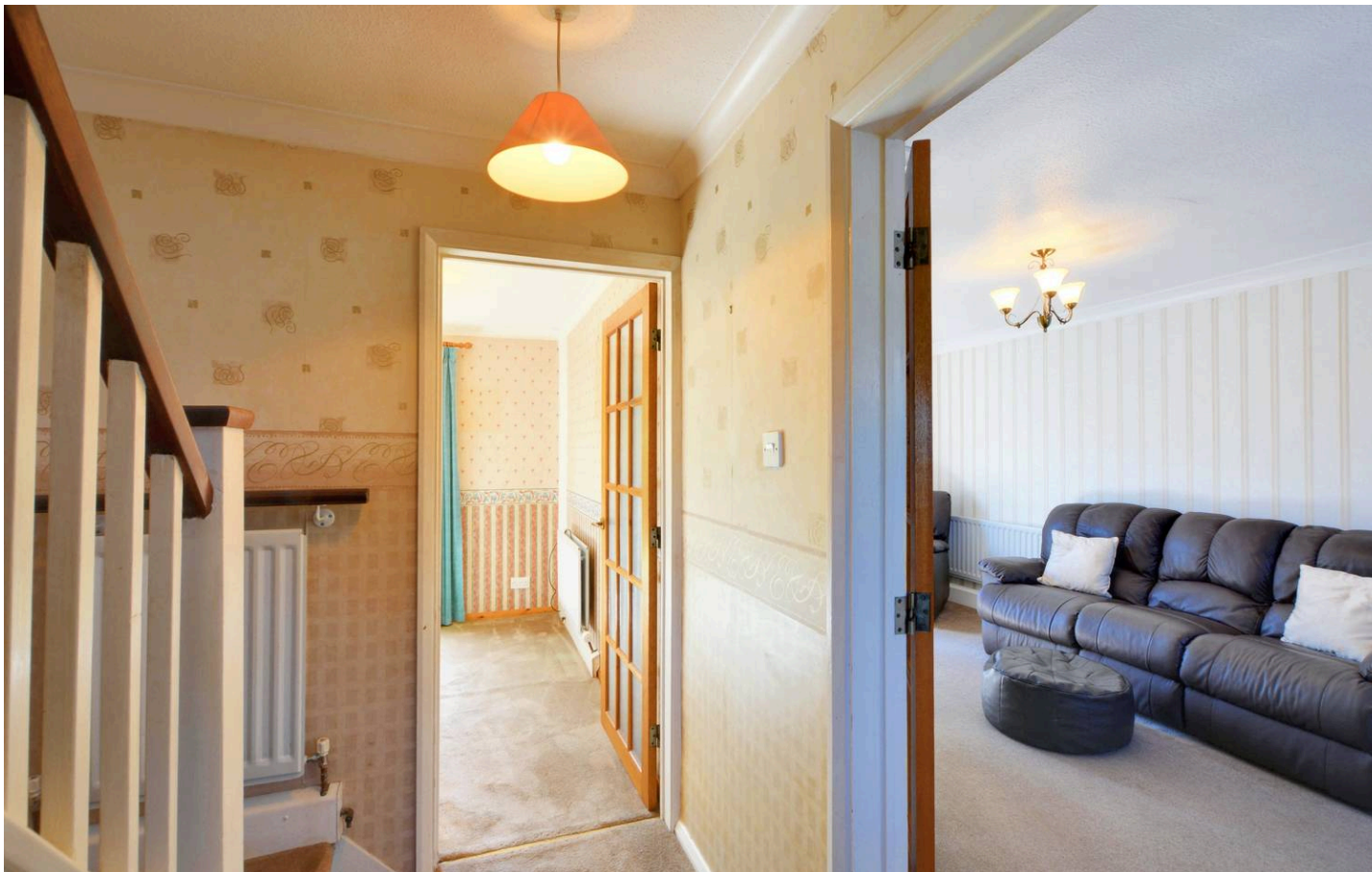
With doors leading to rear garden and archway through to Kitchen.

**Kitchen**

8' 9" x 7' 5" (2.67m x 2.26m)

With range of wall mounted and low level units beneath work surfaces, space for freestanding cooker and fridge/freezer.





### Landing

With storage cupboard and access to all rooms to first floor.

### Bedroom

13' 8" x 8' 6" (4.17m x 2.59m)

With built in storage cupboards

### Bedroom

11' 0" x 9' 1" (3.35m x 2.77m)

With outlook over rear garden and built in storage cupboard

### Bedroom

10' 6" x 6' 11" (3.20m x 2.11m)

Outlook to front with storage cupboard.

### Bathroom

7' 5" x 5' 8" (2.26m x 1.73m)

White suite comprising low level wc, wash hand basin and shower cubicle.



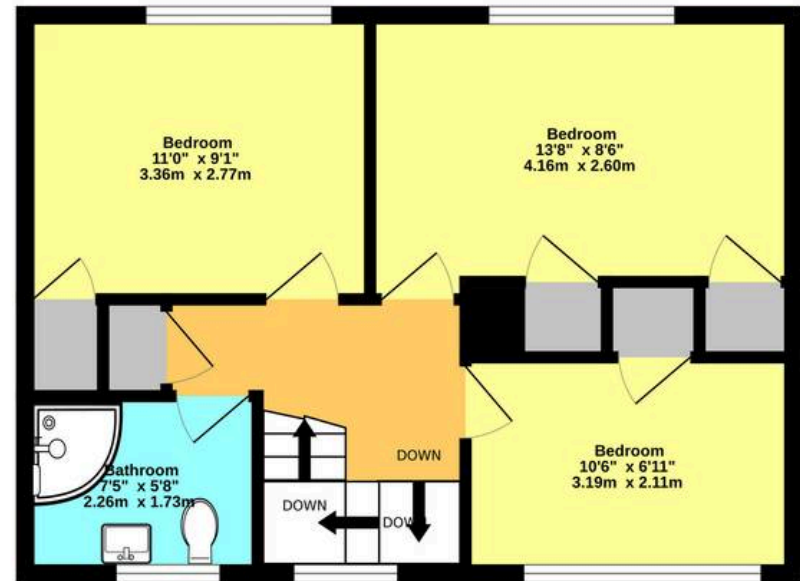




Ground Floor



1st Floor



Whilst every attempt has been made to ensure the accuracy of the floorplan contained here, measurements of doors, windows, rooms and any other items are approximate and no responsibility is taken for any error, omission or mis-statement. This plan is for illustrative purposes only and should be used as such by any prospective purchaser. The services, systems and appliances shown have not been tested and no guarantee as to their operability or efficiency can be given.  
Made with Metropix ©2023



## Skippers Estate Agents – Ashford

5 Kings Parade High Street, Ashford – TN24 8TA

01233 632383

[ashford@skippers-ea.co.uk](mailto:ashford@skippers-ea.co.uk)

[skippers-ea.co.uk](http://skippers-ea.co.uk)

Skippers

