



40 Drummond Grove, Willesborough
£175,000

40 Drummond Grove

Willesborough, Ashford

A bright and spacious two double bedroom, top floor apartment, located within Willesborough, enjoying an open-plan living space, private balcony and access to plenty of parking close-by.
Council Tax band: B

Tenure: Leasehold

- Two-bedroom top floor apartment
- Private balcony
- Plenty of parking available close-by
- En-suite to bedroom 1
- Open-plan Living Room/Kitchen
- Willesborough location



Hallway

Doors to each room, loft access, two storage cupboards (one housing hot water cylinder), radiator, door entry phone, fitted carpet.

Open Plan Living Room

22' 2" x 9' 11" (6.75m x 3.01m)

Double aspect room with windows and doors to the front and rear, doors lead to the balcony, radiators, fitted carpet to living area.

Kitchen

Comprising matching wall and base units with work surfaces over, inset stainless steel sink/drain, built-in electric oven, 4-ring gas hob and extractor above, plumbing and space for washing machine, space for free-standing fridge/freezer. Vinyl flooring.

Bedroom 1

15' 7" x 10' 2" (4.75m x 3.11m)

Window to the front, radiator, fitted carpet.

En Suite

Comprising a square shower enclosure with bi-folding door and thermostatic shower over, WC, wash basin, extractor fan, bathroom heater, partly tiled walls and vinyl flooring.

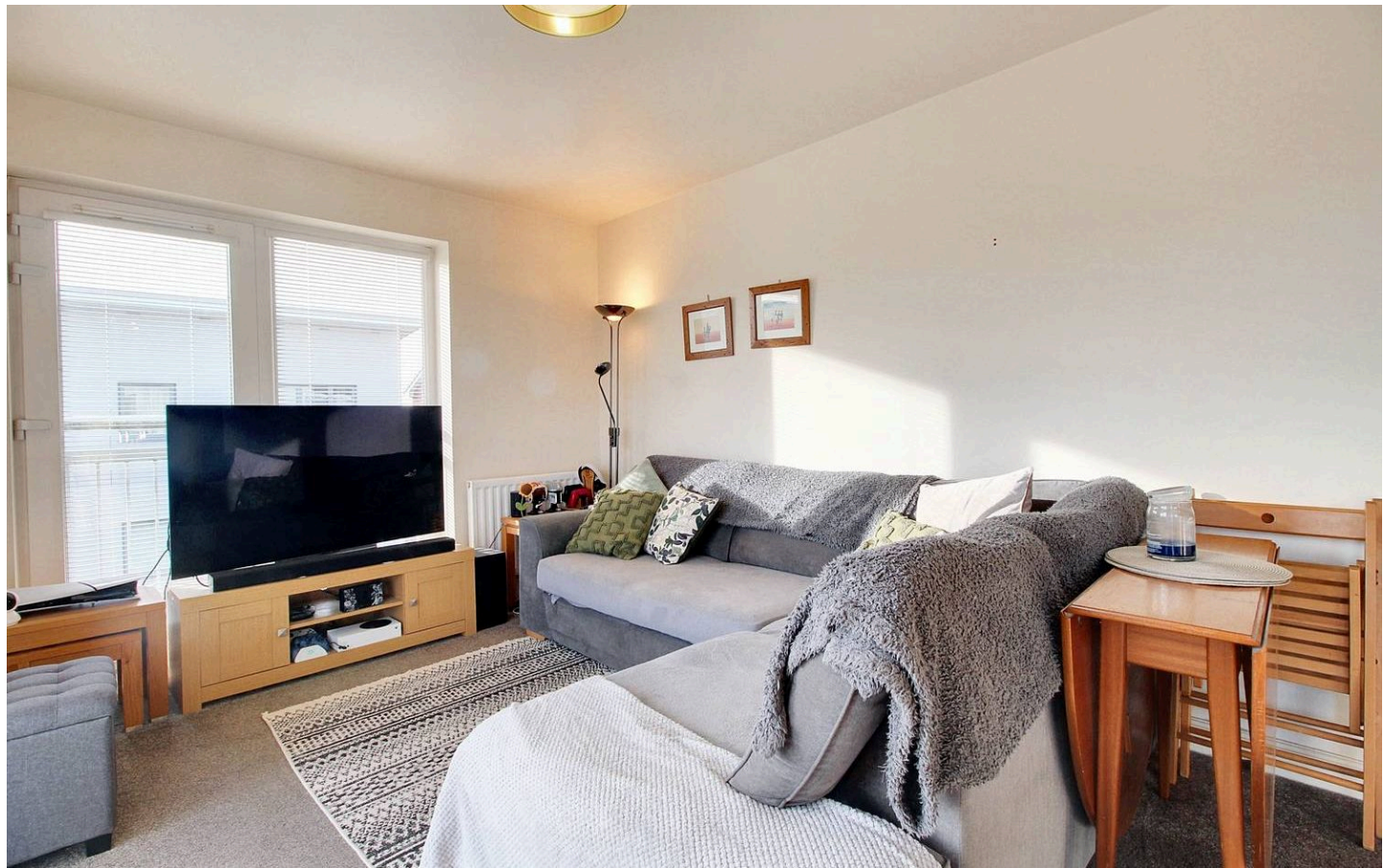
Bedroom 2

12' 0" x 8' 6" (3.66m x 2.60m)

Window to the front, radiator, fitted carpet.

Bathroom

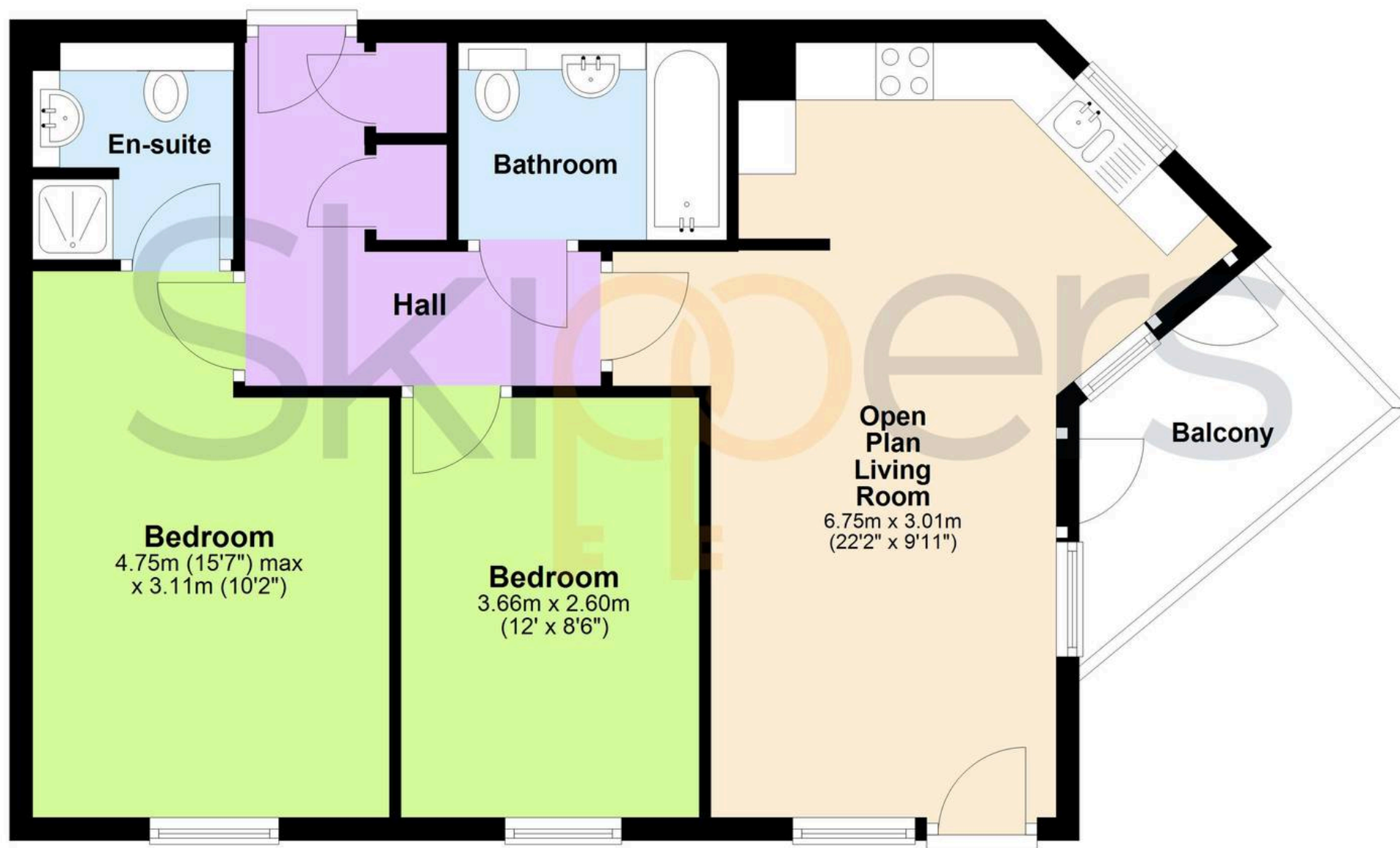
Comprising a bath with mixer taps and shower over, WC, wash basin, extractor fan, radiator, partly tiled walls and vinyl flooring.





Third Floor

Approx. 62.5 sq. metres (672.3 sq. feet)



Total area: approx. 62.5 sq. metres (672.3 sq. feet)



Skippers Estate Agents – Ashford

5 Kings Parade High Street, Ashford – TN24 8TA

01233 632383

ashford@skippers-ea.co.uk

skippers-ea.co.uk

Skippers

