



24 John Haselden Crescent, Ashford

Offers in Region of £475,000

Skippers

24 John Haselden Crescent

Ashford, Ashford

Stunning 4-bed detached house in sought-after location, with woodland views. Modern, spacious, and stylish living spaces, including elegant kitchen with integrated appliances. Ensuite master bedroom, lawned garden with patio area. NHBC warranty and close to schools/amenities. Perfect blend of luxury and comfort in tranquil setting. Schedule a viewing today!

Council Tax band: F

Tenure: Freehold

- Modern and beautifully presented house
- 4 bed detached house
- Five years NHBC remaining
- Close To Local Schools And Amenities
- Overlooking Woodland
- Contemporary electric fire in lounge
- Integral fridge freezer, washing machine and dishwasher



Hallway

Composite door to the front, stairs leading to the first floor, under-stairs storage cupboard, radiator, LVT flooring.

Wc

WC, wash basin, extractor fan, radiator, LVT flooring.

Lounge

12' 5" x 17' 6" (3.79m x 5.33m)

Dual aspect with windows to the rear and side and bi-folding doors to the garden, storage cupboard (currently used as a useful study) radiator, fitted carpet.

Kitchen/Diner

13' 6" x 10' 8" (4.11m x 3.25m)

Comprising matching wall and base units with work surfaces over, inset 1.5 bowl sink/drain, built-in double electric oven, 4-ring gas hob with extractor over, dishwasher & fridge/freezer. Space and plumbing for free-standing washing machine. Tiles splash back and tiled flooring. Radiator. Window to the front.

Landing

Doors to each room, airing cupboard housing hot water cylinder, loft access, radiator, fitted carpet to the stairs and landing. Window to the rear.

Bedroom 1

11' 8" x 13' 11" (3.55m x 4.25m)

Windows to the front, radiator, fitted carpet.

En Suite

Comprising a rectangular shower enclosure with folding door and thermostatic shower, WC, wash basin, extractor fan, towel radiator, tiled walls and tiled flooring.

Bedroom 2

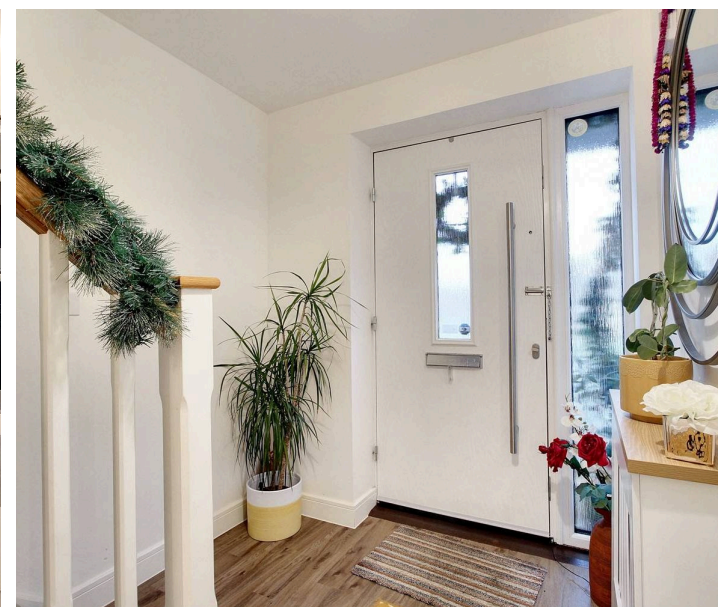
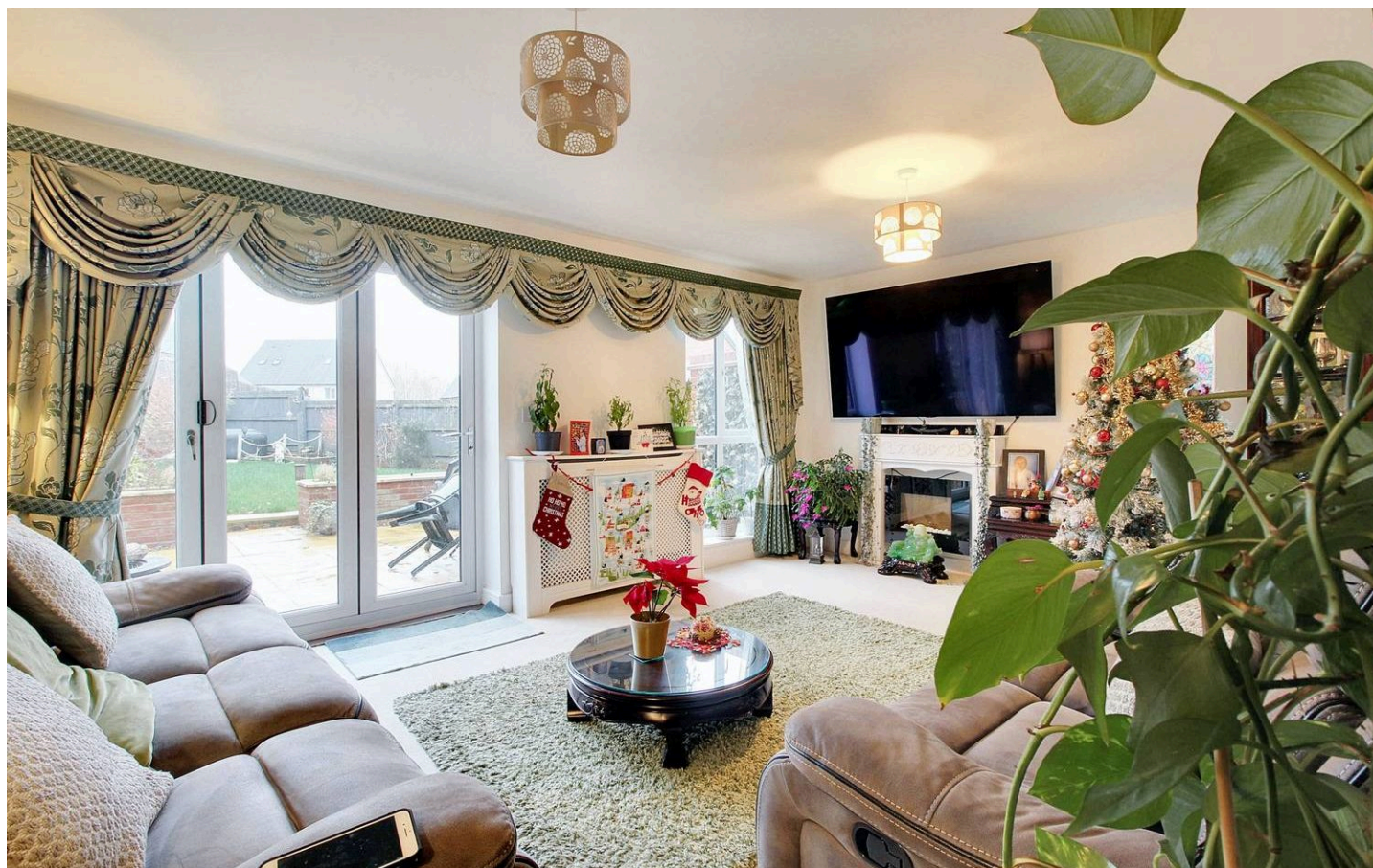
10' 2" x 11' 7" (3.09m x 3.53m)

Window to the front, built-in wardrobe, radiator, fitted carpet.

Bedroom 3

12' 8" x 10' 6" (3.85m x 3.19m)

Window to the rear, radiator, fitted carpet.





Hallway

Composite door to the front, stairs leading to the first floor, under-stairs storage cupboard, radiator, LVT flooring.

Wc

WC, wash basin, extractor fan, radiator, LVT flooring.

Lounge

12' 5" x 17' 6" (3.79m x 5.33m)

Dual aspect with windows to the rear and side and bi-folding doors to the garden, storage cupboard (currently used as a useful study) radiator, fitted carpet.

Kitchen/Diner

13' 6" x 10' 8" (4.11m x 3.25m)

Comprising matching wall and base units with work surfaces over, inset 1.5 bowl sink/drain, built-in double electric oven, 4-ring gas hob with extractor over, dishwasher & fridge/freezer. Space and plumbing for free-standing washing machine. Tiles splash back and tiled flooring. Radiator. Window to the front.

Landing

Doors to each room, airing cupboard housing hot water cylinder, loft access, radiator, fitted carpet to the stairs and landing. Window to the rear.

Bedroom 1

11' 8" x 13' 11" (3.55m x 4.25m)

Windows to the front, radiator, fitted carpet.

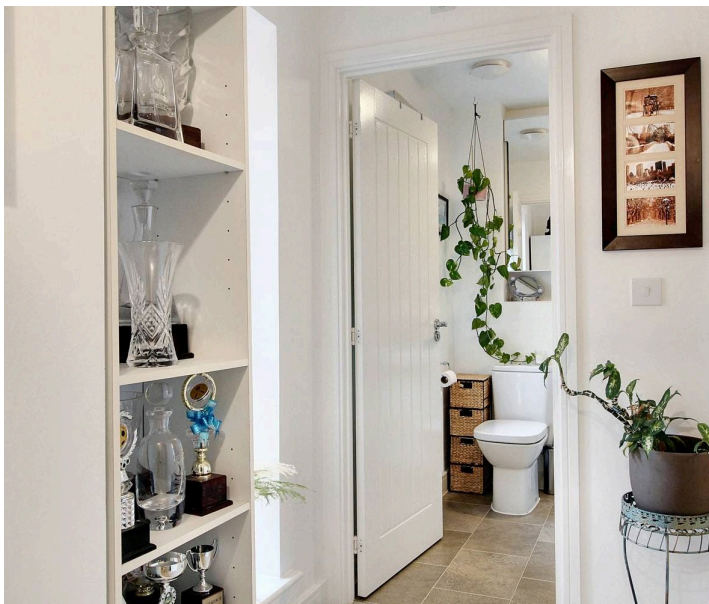
En Suite

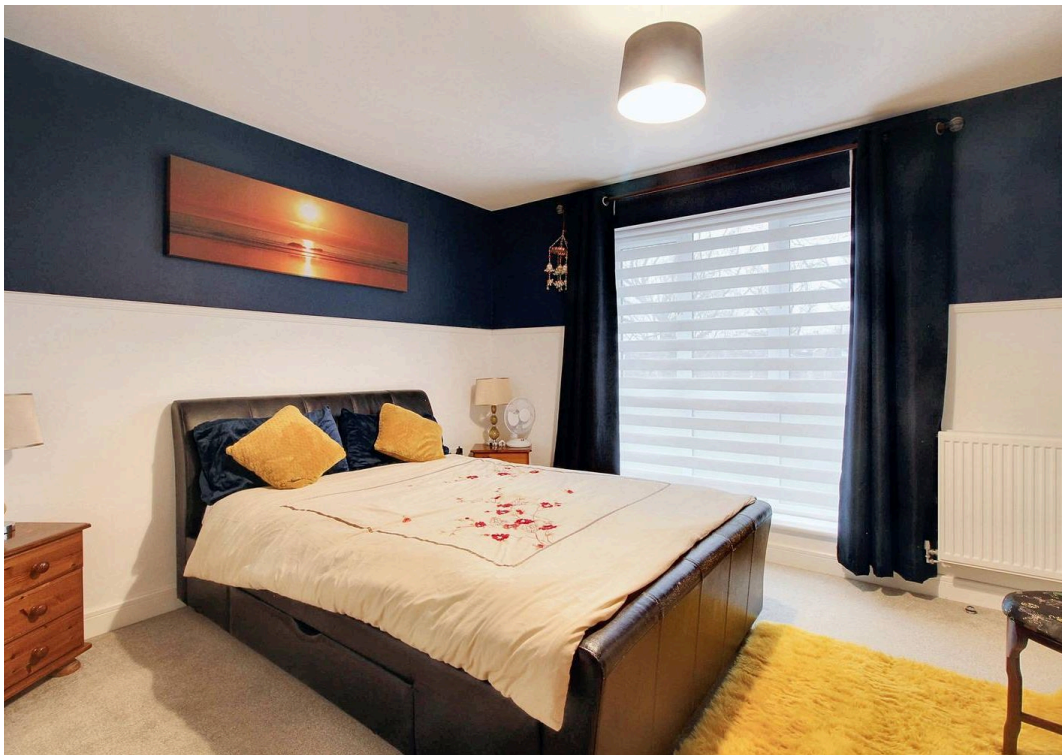
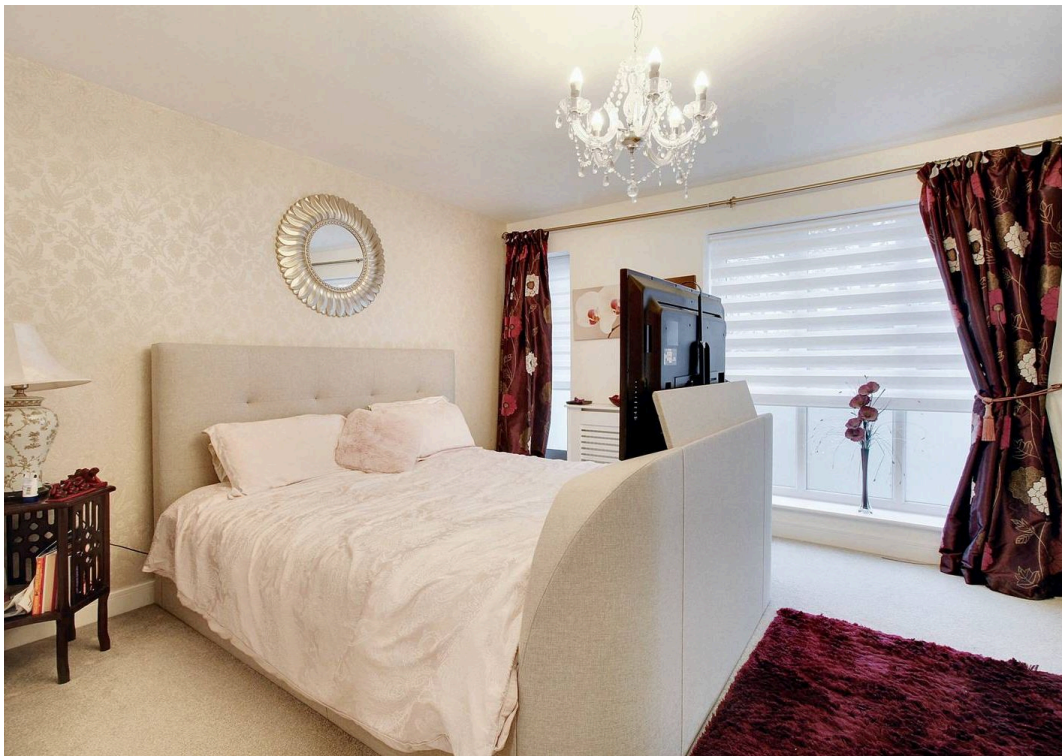
Comprising a rectangular shower enclosure with folding door and thermostatic shower, WC, wash basin, extractor fan, towel radiator, tiled walls and tiled flooring.

Bedroom 2

10' 2" x 11' 7" (3.09m x 3.53m)

Window to the front, built-in wardrobe, radiator, fitted carpet.

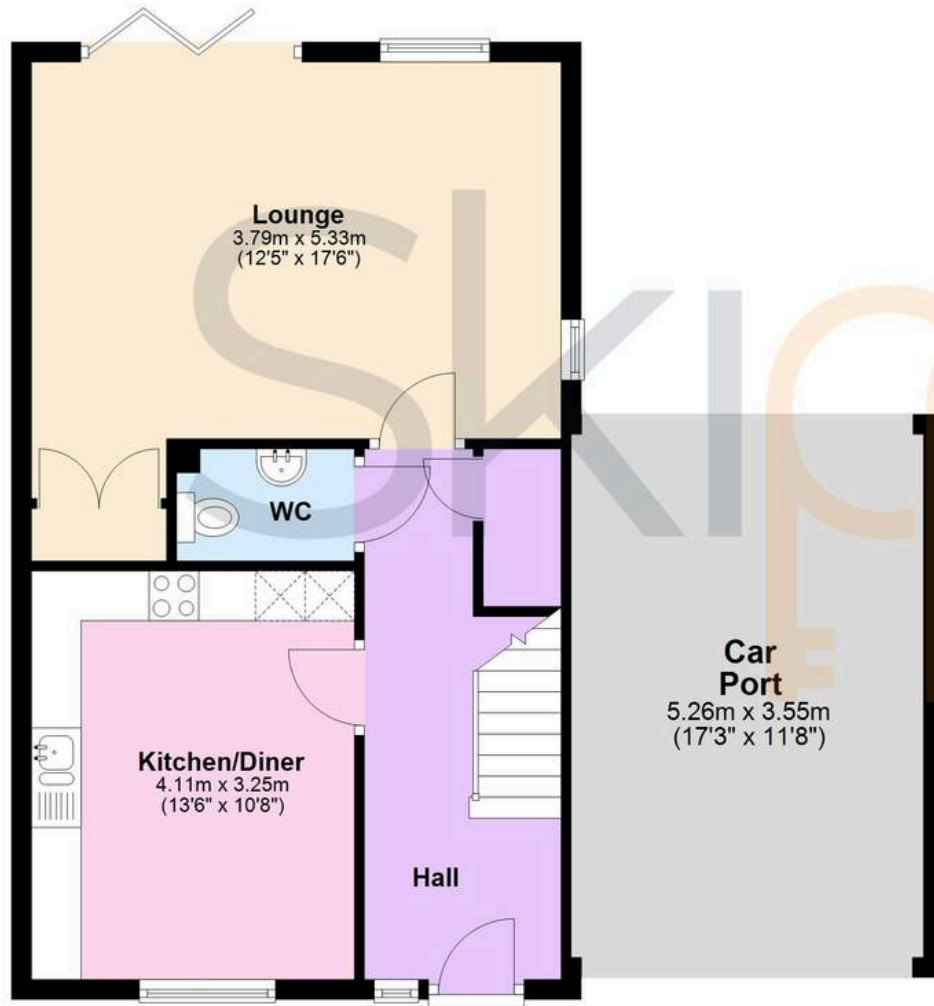






Ground Floor

Approx. 68.4 sq. metres (736.2 sq. feet)



First Floor

Approx. 68.3 sq. metres (734.9 sq. feet)



Total area: approx. 136.7 sq. metres (1471.1 sq. feet)



Skippers Estate Agents – Ashford

5 Kings Parade High Street, Ashford – TN24 8TA

01233 632383

ashford@skippers-ea.co.uk

skippers-ea.co.uk

Skippers

