



Clovelly Marine Parade, Littlestone

New Romney

£215,000



## Clovelley Marine Parade

Littlestone, New Romney

Stunning seafront apartment with panoramic views, high ceilings, modern kitchen & bathroom, garage, and easy access to amenities. Ideal coastal living in Littlestone. Viewing is a must!  
Council Tax band: B

Tenure: Leasehold

EPC Energy Efficiency Rating: C

EPC Environmental Impact Rating: C

- First Floor Apartment
- Two Bedrooms
- Uninterrupted Sea Views
- Light Bright Living Room
- Large Master Bedroom
- Excellent Condition





**Entrance Hall**

**Living Room**

18' 4" x 12' 7" (5.60m x 3.84m)

**Kitchen**

10' 8" x 7' 10" (3.24m x 2.39m)

**Bathroom**

**Bedroom**

13' 11" x 12' 11" (4.24m x 3.93m)

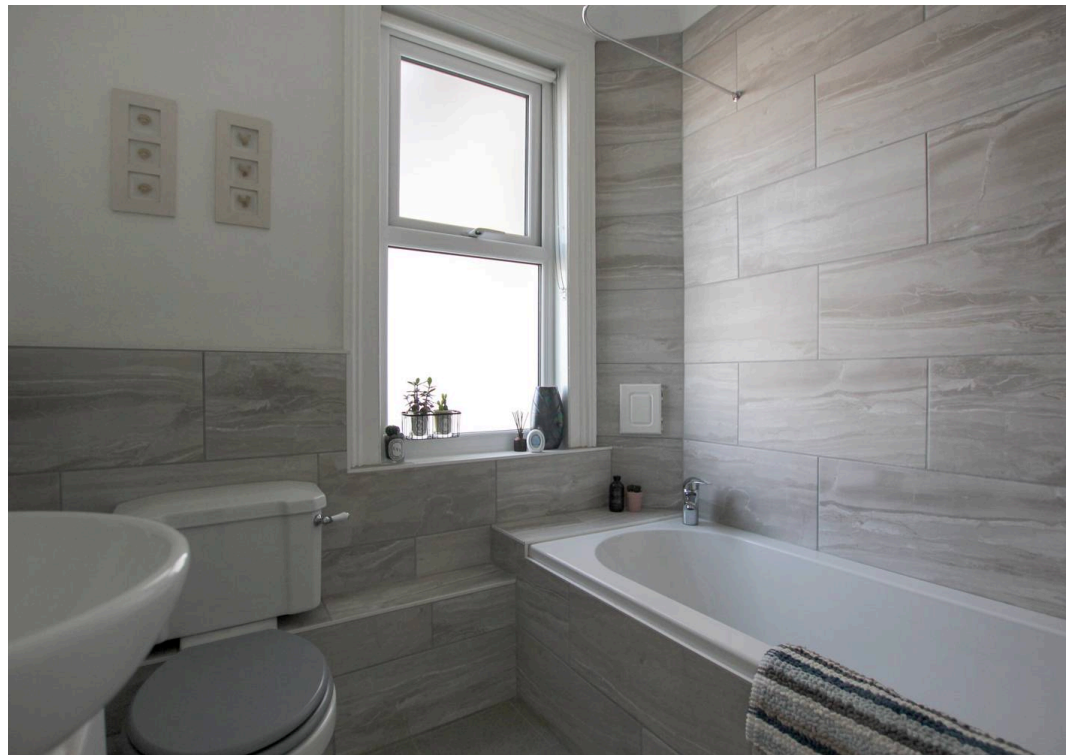
**Bedroom**

11' 1" x 6' 4" (3.37m x 1.92m)

**Garage**



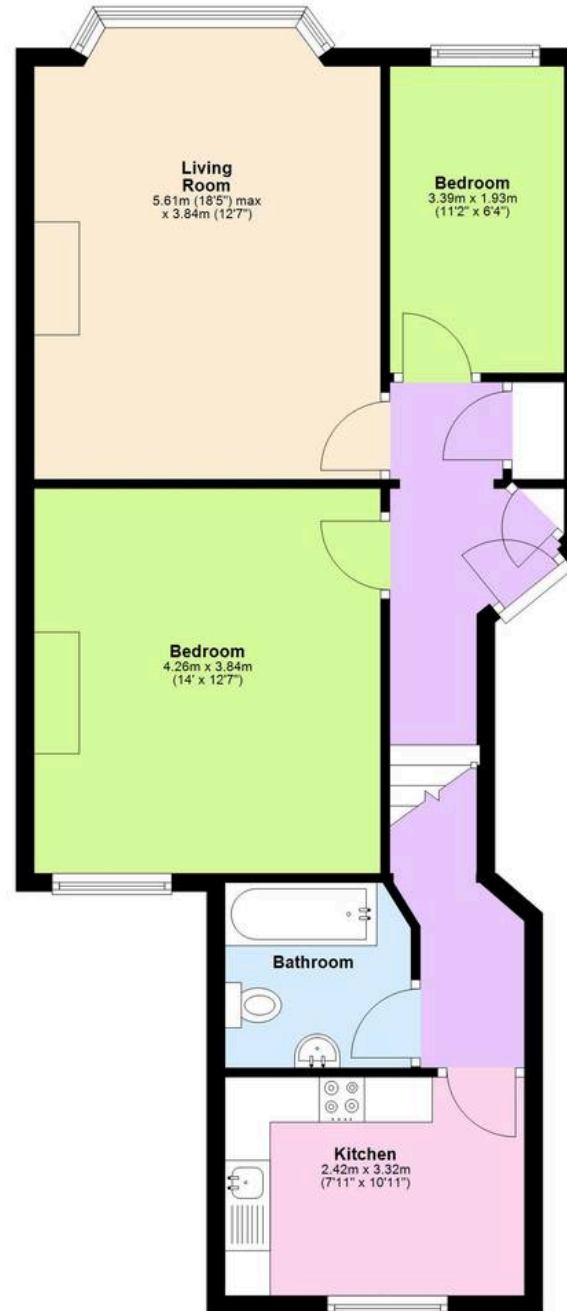






# First Floor

Approx. 65.6 sq. metres (706.1 sq. feet)



Total area: approx. 65.6 sq. metres (706.1 sq. feet)





## Skippers Estate Agents - New Romney

55 High Street - TN28 8AH

01797 362898

[newromney@skippers-ea.co.uk](mailto:newromney@skippers-ea.co.uk)

[skippers-ea.co.uk](http://skippers-ea.co.uk)

Skippers