



61 George Street, Ashford  
£210,000

Skippers

# 61 George Street

Ashford, Ashford

A 1st floor 1-bedroom apartment, situated within a modern building enjoying well maintained communal gardens, concierge service, and only a 5-minute walk to the International Station.

Council Tax band: B

Tenure: Leasehold

- Spacious 1-bedroom apartment
- 1st floor
- 5-minute walk to Ashford International Station
- Open-Plan living with modern Kitchen
- Walking distance to Ashford Town Centre
- Concierge on site and Residents Communal Lounge
- Well-maintained Communal Gardens
- Built in 2020 - remainder of New-Build Warranty



### **Communal Entrance**

The ground floor of Victoria Point features a residents communal lounge, where you can meet other residents, meet visitors, sit and relax or work remotely. There is also access into the communal gardens and the stairwell leads up to the upper floors. There is also a lift which gives access into the basement car park and to the upper floors.

### **First Floor**

Follow the corridor from the lift/stairs to the property.

### **Entrance Hallway**

Security door from communal hallway, doors to each room, storage cupboard housing central heating boiler and plumbing/space for washing machine, radiator, door entry phone, LVT flooring.

### **Open-Plan Living Room**

Windows to the front and door out to balcony, radiator and LVT flooring.

### **Kitchen**

Modern fitted kitchen comprising wall and base units with work surfaces over, inset stainless steel sink/drain, built in electric oven, 4-zone hob and extractor, fridge/freezer and dishwasher.

### **Bedroom**

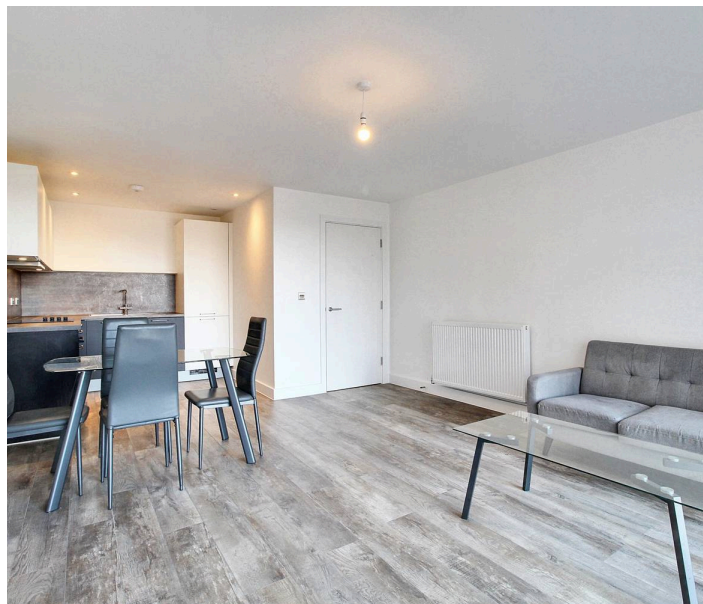
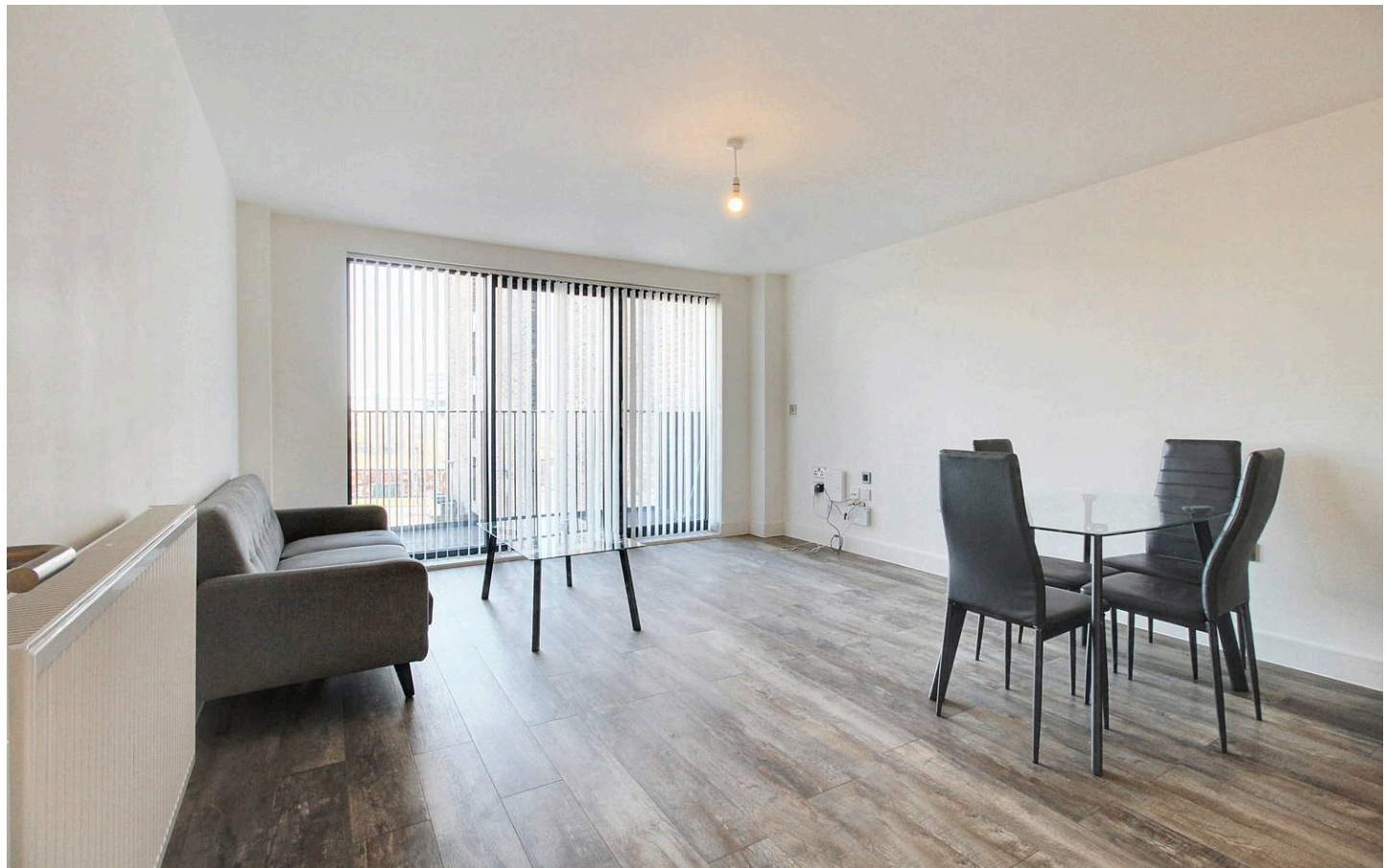
Window to the front, radiator, fitted carpets.

### **Shower Room**

Comprising a rectangular shower enclosure with sliding door and thermostatic rainfall head shower, WC, wash basin, extractor fan, shaver socket, towel radiator, partly tiled walls (fully tiled to shower enclosure) and tiled flooring.

### **Services**

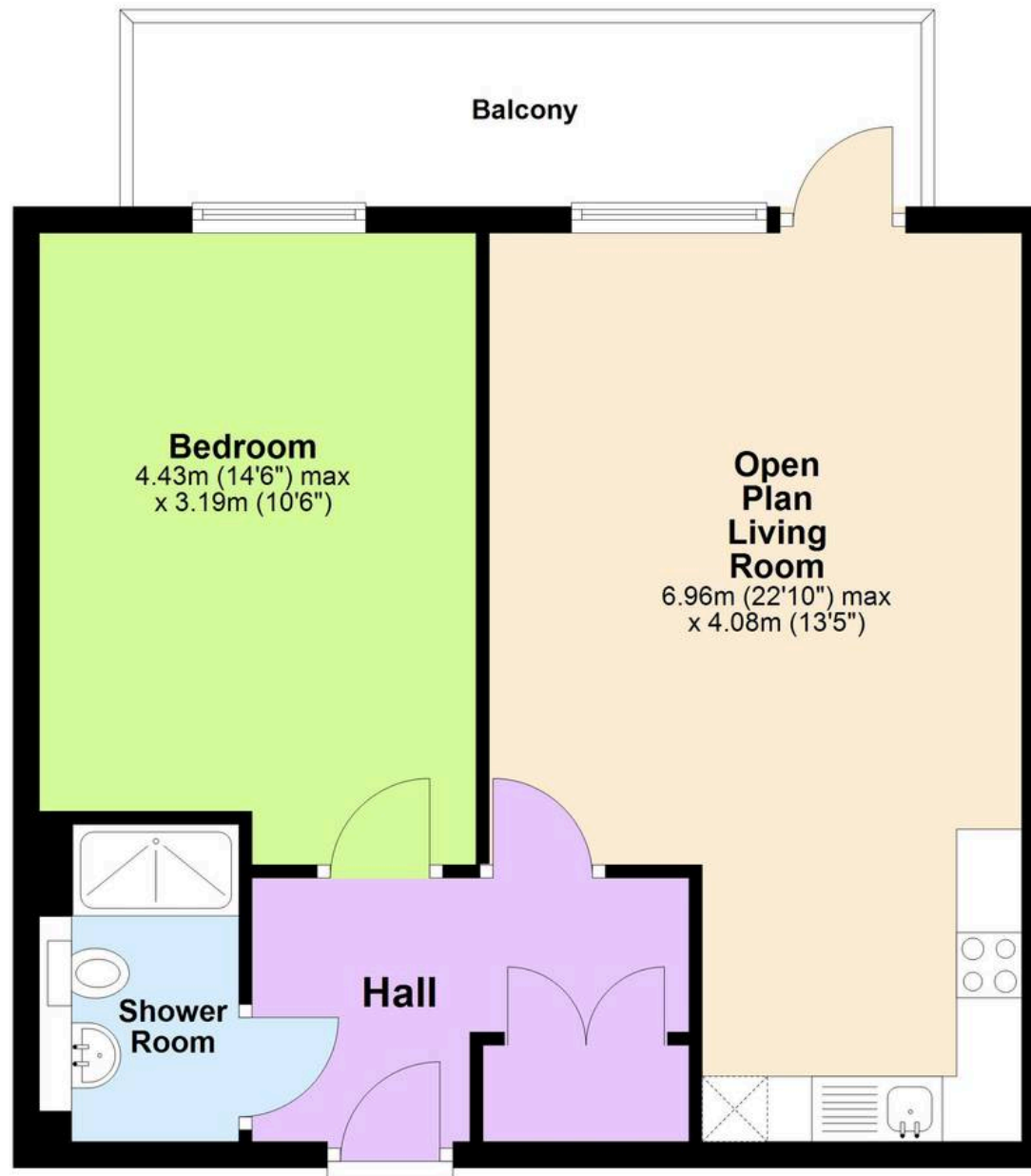
All mains services connected. EPC rating: B (82). Local Authority: Ashford Borough Council. Council Tax Band: B





# First Floor

Approx. 51.6 sq. metres (555.9 sq. feet)



Total area: approx. 51.6 sq. metres (555.9 sq. feet)



## Skippers Estate Agents – Ashford

5 Kings Parade High Street, Ashford – TN24 8TA

01233 632383

[ashford@skippers-ea.co.uk](mailto:ashford@skippers-ea.co.uk)

[skippers-ea.co.uk](http://skippers-ea.co.uk)

Skippers

