



35 Silver Hill Road, Willesborough

In Excess of **£200,000**

Skippers

35 Silver Hill Road

Willesborough, Ashford

A Grade II listed cottage, situated within close proximity of the M20 motorway network and William Harvey Hospital, benefitting from front and rear gardens, a garage with driveway parking. In need of internal modernisation and improvement throughout. No onward chain.

Council Tax band: B

Tenure: Freehold

- Grade II listed cottage
- Two bedrooms
- In need of modernisation & improvement throughout
- Timber Garage & Driveway parking
- Close to the William Harvey Hospital & M20 motorway
- No onward chain



Porch

Lounge

14' 0" x 12' 1" (4.26m x 3.69m)

Kitchen

13' 11" x 6' 9" (4.25m x 2.07m)

Rear Lobby

Cloakroom

Bathroom

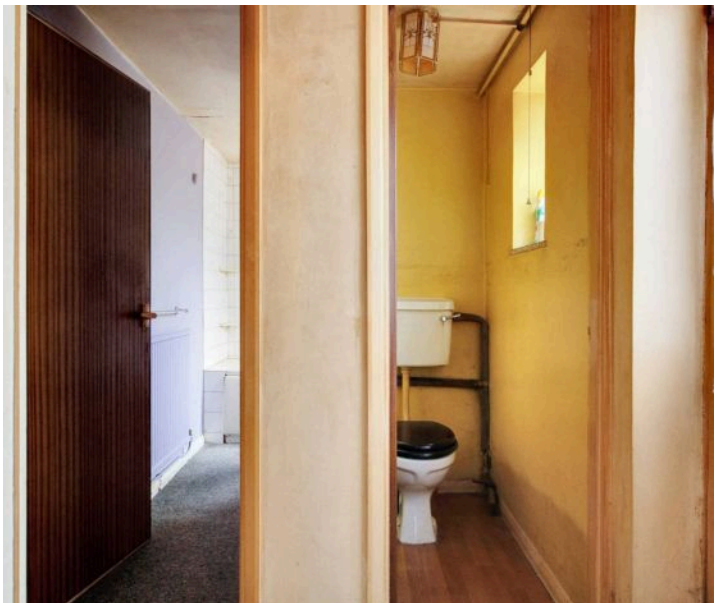
Landing

Bedroom 1

12' 2" x 9' 5" (3.71m x 2.87m)

Bedroom 2

12' 5" x 7' 2" (3.78m x 2.19m)







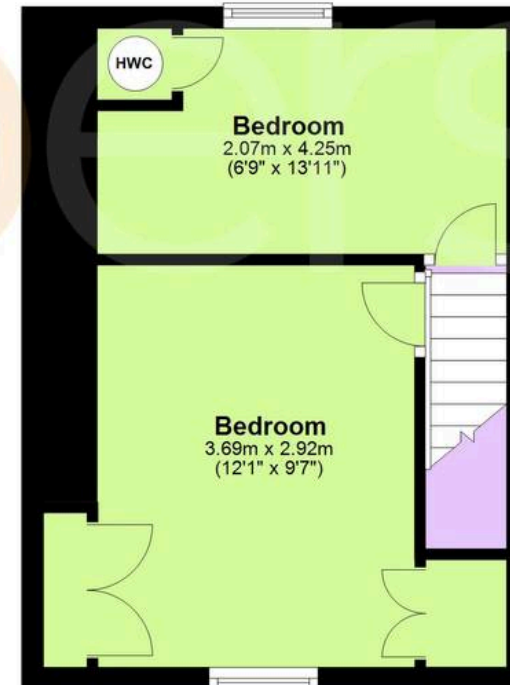
Ground Floor

Approx. 33.8 sq. metres (364.0 sq. feet)



First Floor

Approx. 24.9 sq. metres (268.1 sq. feet)



Total area: approx. 58.7 sq. metres (632.1 sq. feet)



Skippers Estate Agents – Ashford

5 Kings Parade High Street, Ashford – TN24 8TA

01233 632383

ashford@skippers-ea.co.uk

skippers-ea.co.uk



