



3 Fairview Drive, Ashford  
£375,000



## 3 Fairview Drive

Ashford, Ashford

A well-presented four/five bedroom townhouse, with accommodation arranged across three floors, WC to each floor, flexible living, a sunny rear garden and a garage with allocated parking space for 1 car. Council Tax band: D

Tenure: Freehold

- 4/5 Bedroom Townhouse
- Garage & Parking Space for 1 Car
- Sunny Rear Garden
- Accommodation Arranged Across Three Floors
- Downstairs Cloakroom, First Floor Shower Room, Top Floor Bathroom & En-suite
- First Floor Living Room
- End of Terrace
- Good Access to M20 Motorway & Walking Distance of Ashford International Station & Designer Outlet





**Hallway**

Part glazed composite door to the front, window to the side, stairs to the first floor with under stairs storage cupboard, radiator and laminate wood flooring.

**Reception/Bedroom 5**

Window to the front, radiator and laminate wood flooring.

**Cloakroom**

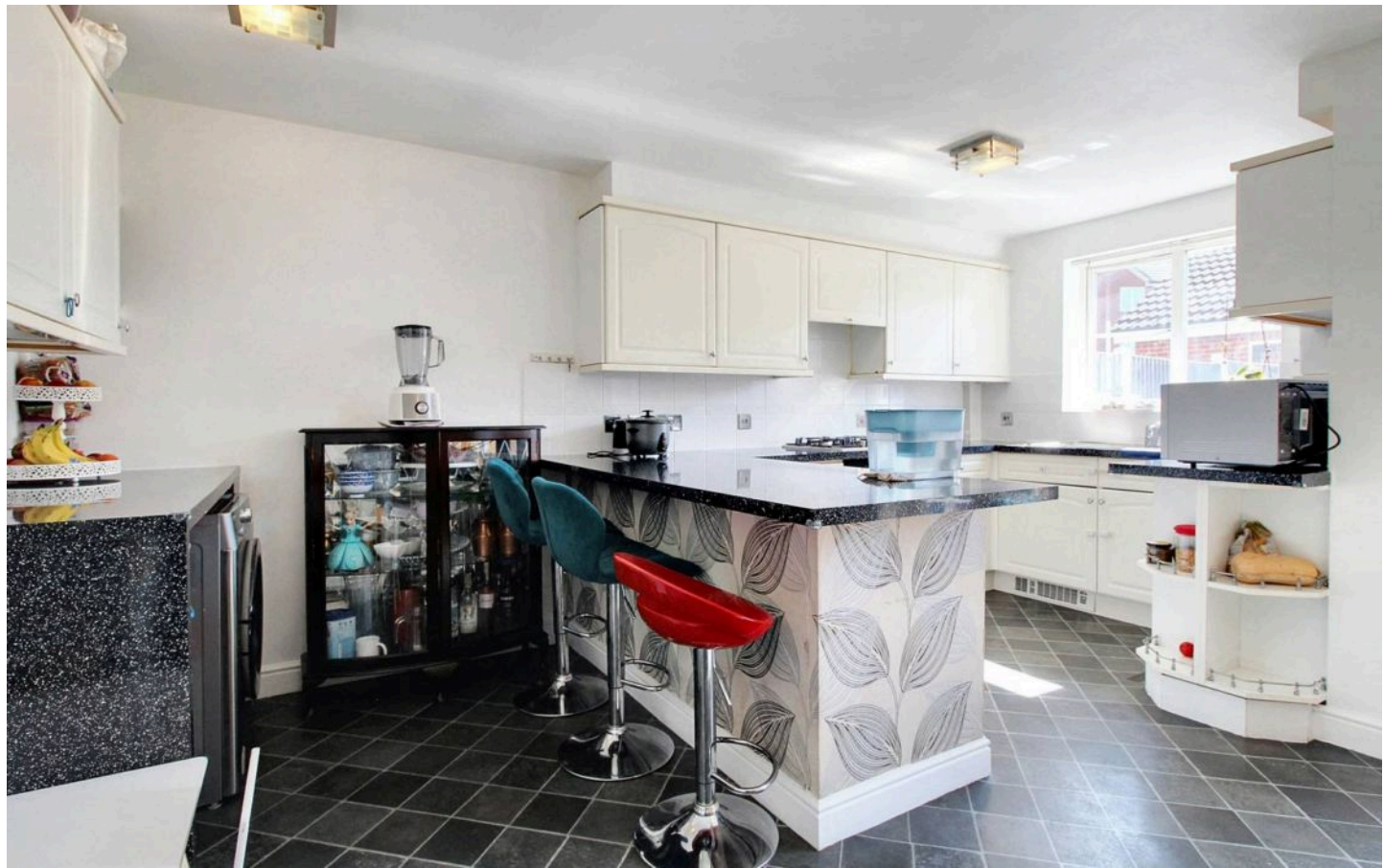
Comprising a WC, wash basin, extractor fan. Radiator, partly tiled walls and tiled flooring.

**Kitchen/Diner**

Spacious 'L' shaped room with doors leading out to the garden. Kitchen comprising matching wall and base units with work surfaces over, inset stainless steel sink/drainer, built-in electric oven with 5-ring gas hob and extractor over. Space and plumbing for washing machine and tumble dryer. Radiator and vinyl flooring.

**First Floor Landing**

Stairs to the second floor, doors to each room, generous storage cupboard, radiator and fitted carpet.





**Lounge**

Windows to the rear, TV & TEL point, radiators and fitted carpet.

**Bedroom 2**

Windows to the front, radiators and fitted carpet.

**Shower Room**

Comprising a square shower enclosure with no-folding door and electric shower, WC, wash basin, extractor fan, radiator, partly tiled walls and vinyl flooring.

**Second Floor Landing**

Doors to each room, loft access, airing cupboard housing the hot water cylinder, radiator and fitted carpet.

**Bedroom 1**

Windows to the rear, fitted wardrobes, radiators and fitted carpet.

**En Suite**

Comprising a quadrant shower enclosure with sliding doors electric shower, WC, wash basin, extractor fan, radiator, partly tiled walls and vinyl flooring.

**Bedroom 3**

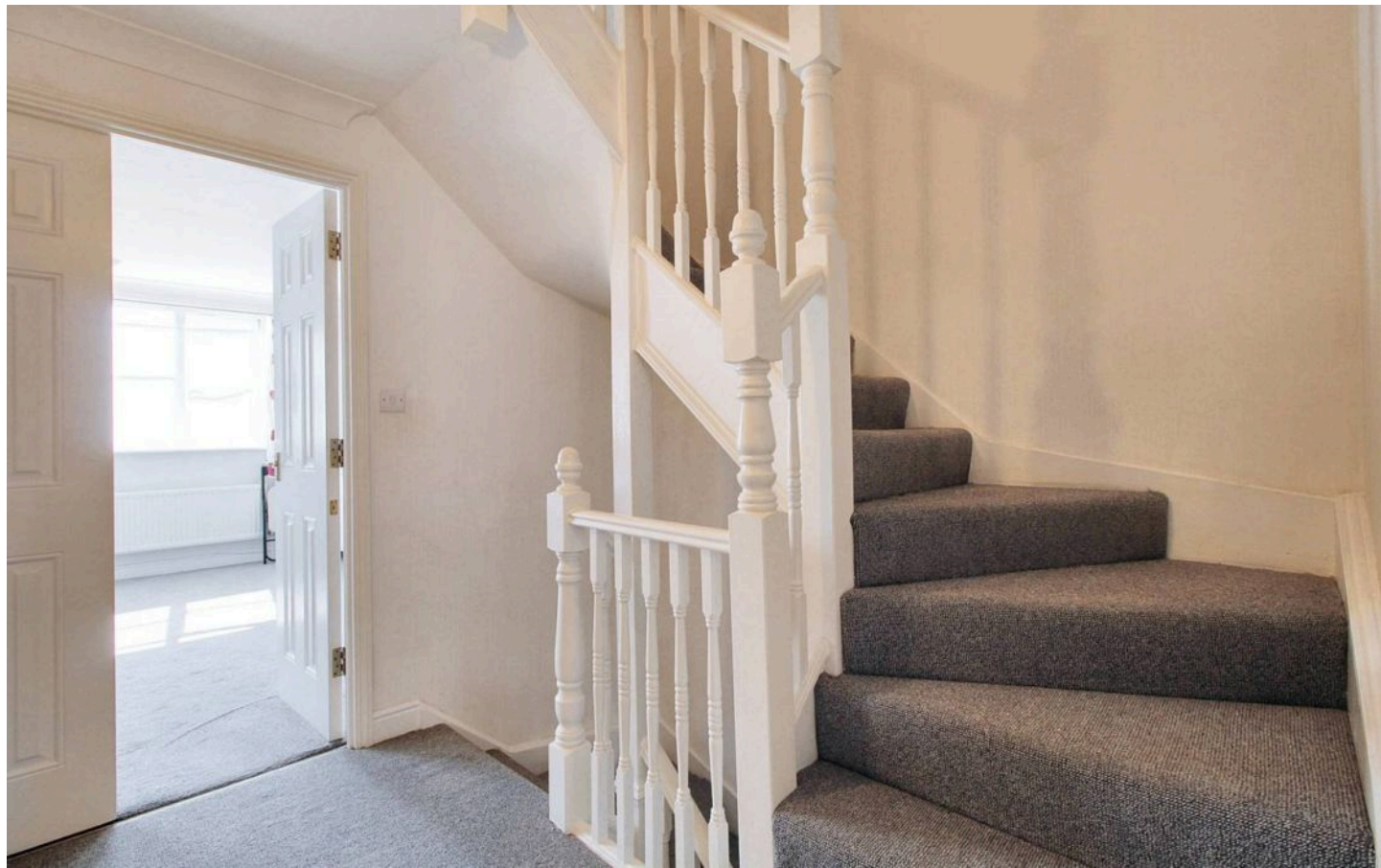
Window to the front, radiator and fitted carpet.

**Bedroom 4**

Window to the front, radiator and fitted carpet.

**Bathroom**

Comprising a bath with mixer taps and hand shower attachment, WC, wash basin, extractor fan, shaver socket, radiator, partly tiled walls and tiled flooring.







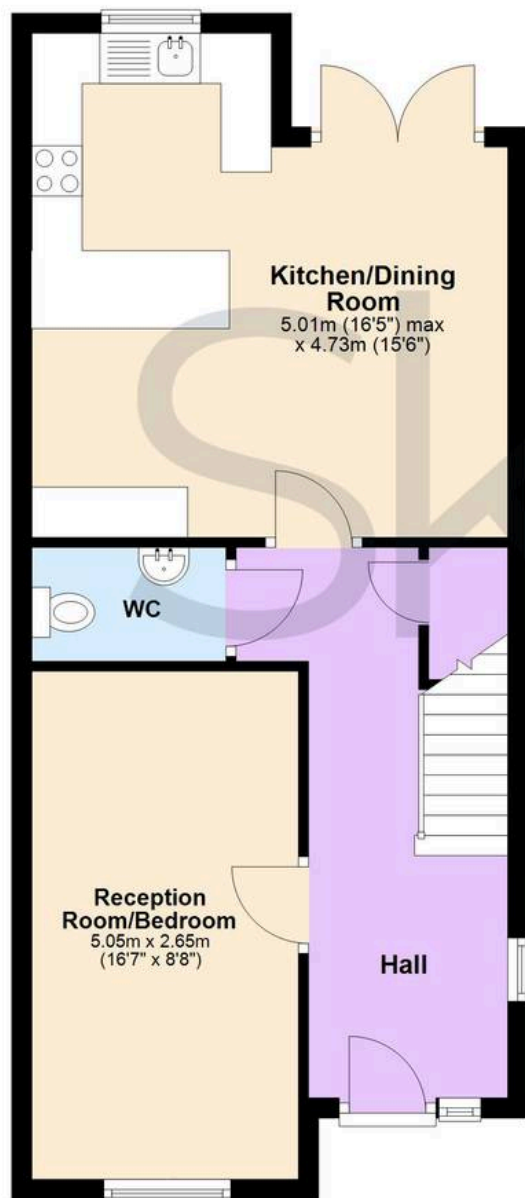






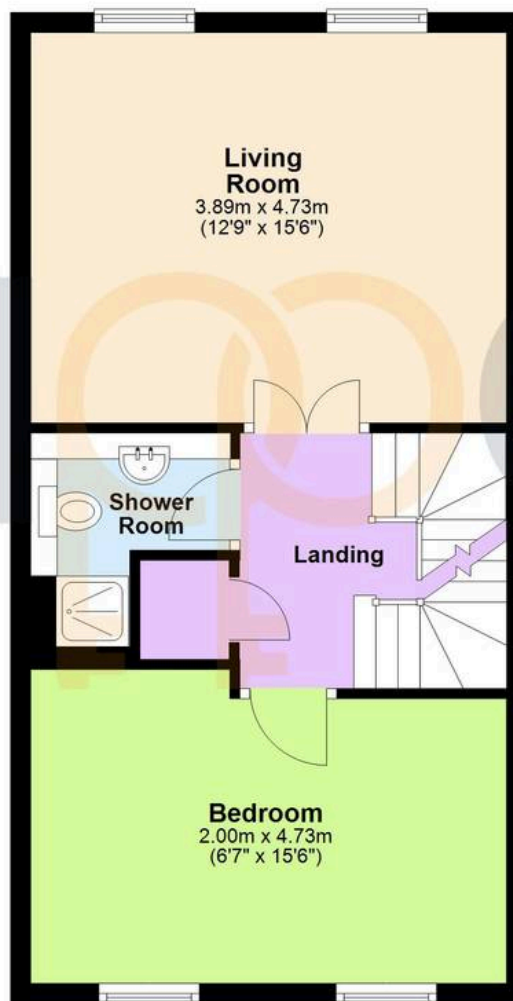
## Ground Floor

Approx. 49.5 sq. metres (533.2 sq. feet)



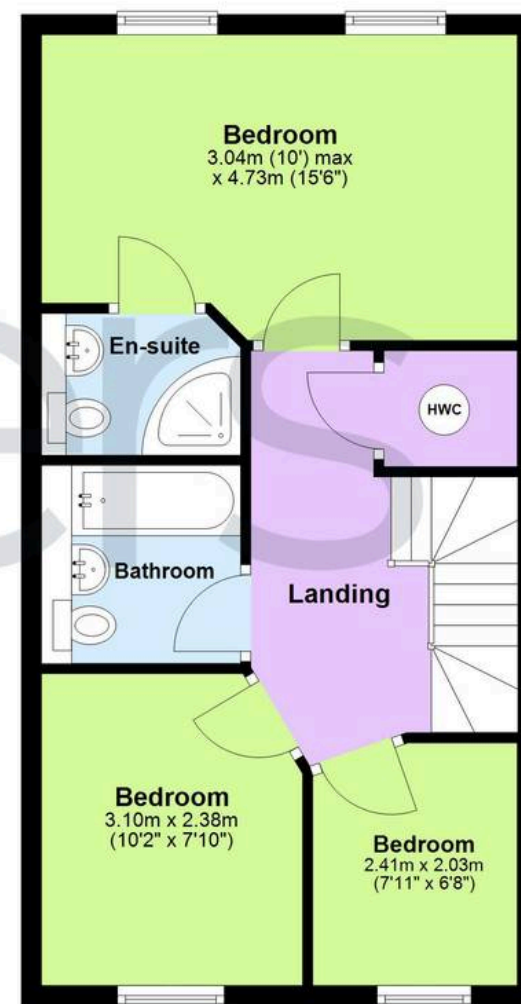
## First Floor

Approx. 44.7 sq. metres (481.4 sq. feet)



## Second Floor

Approx. 44.6 sq. metres (480.1 sq. feet)



Total area: approx. 138.9 sq. metres (1494.6 sq. feet)



## Skippers Estate Agents – Ashford

5 Kings Parade High Street, Ashford – TN24 8TA

01233 632383

[ashford@skippers-ea.co.uk](mailto:ashford@skippers-ea.co.uk)

[skippers-ea.co.uk](http://skippers-ea.co.uk)





