



73 Burton Road, Kennington

Offers in Region of **£350,000**

Skippers

73 Burton Road

Kennington, Ashford

Charming 3-bed semi in sought-after Kennington. No onward chain. Cosy lounge, fitted kitchen/diner, secluded garden, driveway for 3 cars. Close to transport links. Ideal family home. Council Tax band: C

Tenure: Freehold

- NO ONWARD CHAIN
- Charming 3 Bedroom Semi-Detached Family Home
- Driveway parking for 3 vehicles
- Convenient & Sought after Kennington Area
- Close proximity to local transport links with access to Ashford Town & Train Station
- Bathroom & Additional Shower Room
- Lovely Fitted Kitchen/Diner with bi-fold doors to Garden and handy utility room
- Secluded Rear Garden
- Cosy Lounge with bay window to front, feature fireplace & stripped floorboards



Hallway

Stairs leading to first floor with understairs recess and doors leading to Lounge & Kitchen/Diner.

Lounge

13' 6" x 11' 0" (4.11m x 3.35m)

Large bay window outlook to front, stripped floorboards.

Kitchen/Diner

18' 7" x 11' 7" (5.66m x 3.53m)

Range of shaker style cupboards and drawers beneath wooden work surfaces, ceramic sink with mixer tap and drainer, integrated range cooker integrated fridge/freezer and space and plumbing for dishwasher and washing machine. Window to side, bi-fold doors to rear garden and access through to utility room.

Utility Room

Door to garden and window to rear, wall mounted boiler and space and plumbing for a washing machine.

Landing

Window to side and doors leading to bedrooms and bathroom.





Hallway

Stairs leading to first floor with understairs recess and doors leading to Lounge & Kitchen/Diner.

Lounge

13' 6" x 11' 0" (4.11m x 3.35m)

Large bay window outlook to front, stripped floorboards.

Kitchen/Diner

18' 7" x 11' 7" (5.66m x 3.53m)

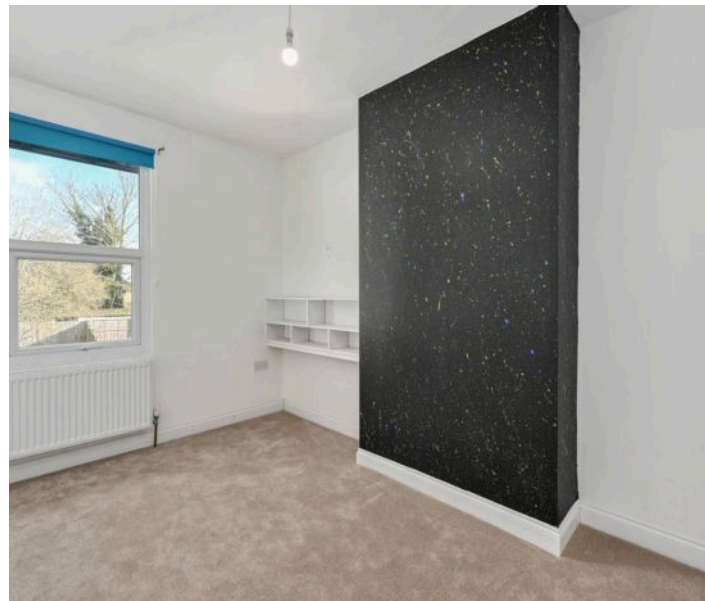
Range of shaker style cupboards and drawers beneath wooden work surfaces, ceramic sink with mixer tap and drainer, integrated range cooker integrated fridge/freezer and space and plumbing for dishwasher and washing machine. Window to side, bi-fold doors to rear garden and access through to utility room.

Utility Room

Door to garden and window to rear, wall mounted boiler and space and plumbing for a washing machine.

Landing

Window to side and doors leading to bedrooms and bathroom.









Ground Floor

Approx. 43.5 sq. metres (468.0 sq. feet)



First Floor

Approx. 40.2 sq. metres (433.0 sq. feet)



Total area: approx. 83.7 sq. metres (901.0 sq. feet)



Skippers Estate Agents – Ashford

5 Kings Parade High Street, Ashford – TN24 8TA

01233 632383

ashford@skippers-ea.co.uk

skippers-ea.co.uk

Skippers

