



Hythe Road, Dymchurch

Romney Marsh

£475,000



44 Hythe Road

Dymchurch, Romney Marsh

Immaculate and spacious 3-bed detached house in Dymchurch village. Characterful, with log burner, garden room, study, and hot tub. En-suite master, solar panels, carport, and prime location. View now!

Council Tax band: E

Tenure: Freehold

EPC Energy Efficiency Rating: C

EPC Environmental Impact Rating: D

- Three Bedroom
- Detached House
- Large Reception Space
- Garden Room
- Central Location
- Solar Panels
- Garden Bar and Hot Tub



Entrance Hall

Wc

Dining Room

14' 8" x 10' 11" (4.48m x 3.32m)

Living Room

14' 10" x 21' 4" (4.52m x 6.49m)

Sun Room

8' 0" x 12' 7" (2.44m x 3.84m)

Kitchen/Breakfast Room

8' 11" x 21' 5" (2.72m x 6.53m)

Study

4' 8" x 10' 2" (1.43m x 3.11m)

Office

4' 8" x 20' 10" (1.42m x 6.36m)

Landing

Bedroom

14' 9" x 10' 0" (4.50m x 3.06m)

En-Suite

Walk In Wardrobe

5' 3" x 6' 8" (1.59m x 2.04m)

Bedroom

11' 6" x 11' 5" (3.51m x 3.48m)

Bedroom

9' 5" x 11' 1" (2.87m x 3.37m)

Bathroom

6' 9" x 10' 9" (2.07m x 3.28m)

Garden Room

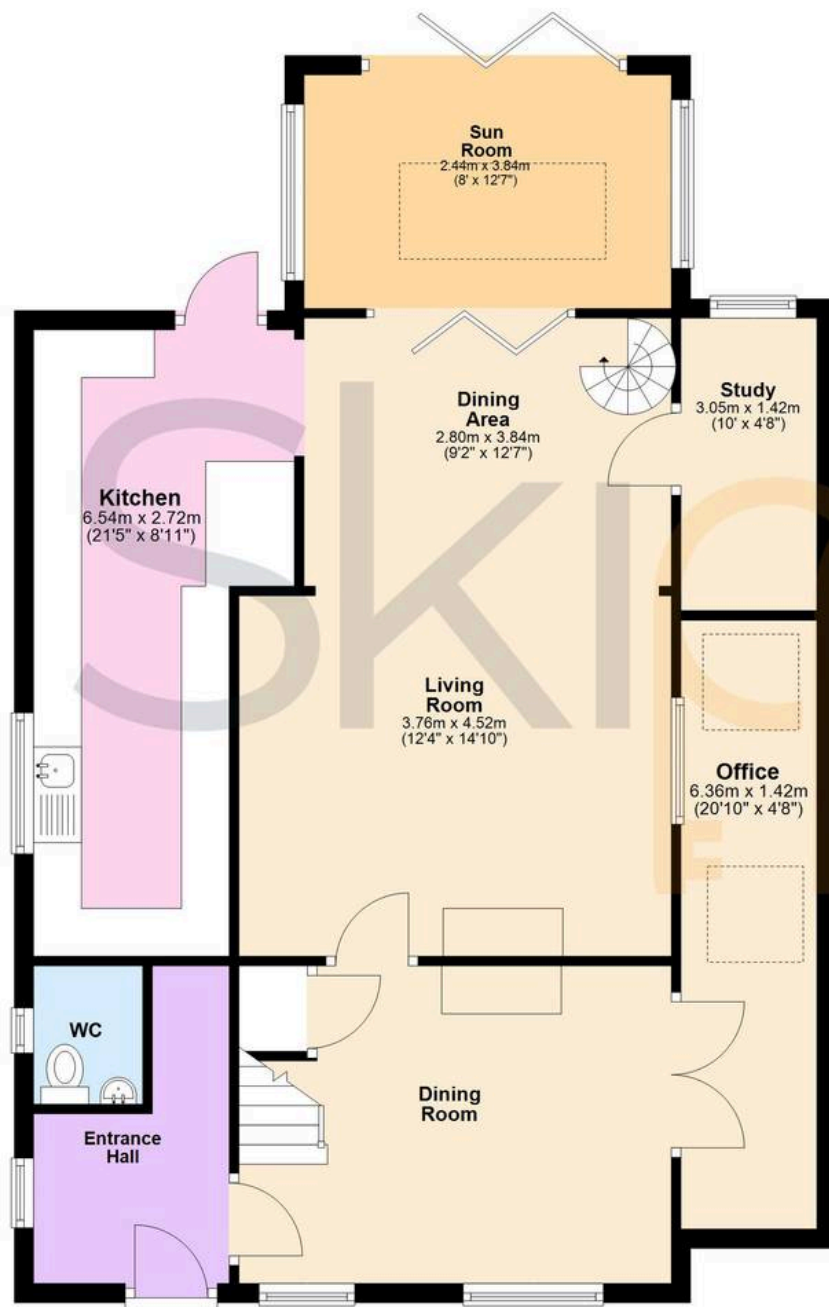
8' 6" x 15' 3" (2.60m x 4.65m)





Ground Floor

Approx. 91.0 sq. metres (979.2 sq. feet)



First Floor

Approx. 59.6 sq. metres (641.9 sq. feet)



Total area: approx. 150.6 sq. metres (1621.2 sq. feet)



Skippers Estate Agents – New Romney

Andrew & Co, 55 High Street – TN28 8AH

01797 362898

newromney@skippers-ea.co.uk

skippers-ea.co.uk

Skippers