



22 Viburnum Close, Ashford

Offers in Region of **£385,000**

Skippers

22 Viburnum Close

Ashford, Ashford

Sought-after 4-bed detached home in Godinton Park. Features separate lounge, dining room, conservatory, modern kitchen. Spacious garden, patio, summer house. Driveway parking for 3+ vehicles, garage with convenient access. Perfect family home just waiting for new owners!

Council Tax band: D

Tenure: Freehold

- Detached 4 Bedroom Family Home
- Popular Godinton Park Location Close to Schools and Amenities
- Garage with Driveway Parking
- Separate Lounge & Dining Room
- Enclosed Rear Garden
- Cloakroom
- Conservatory
- Kitchen



Hallway

Carpeted with stairs leading to first floor and large understairs storage cupboard.

Cloakroom

Low level wc, wash hand basin and obscured window to side.

Lounge

17' 11" x 11' 10" (5.46m x 3.61m)

Carpeted with window to rear and door leading through to conservatory.

Conservatory

9' 7" x 4' 6" (2.92m x 1.37m)

Kitchen

9' 3" x 7' 6" (2.82m x 2.29m)

Range of cupboards and drawers beneath mottled effect worksurfaces additional wall mounted units, serving hatch to dining room window outlook to front, sink with mixer tap and drainer, space and plumbing for dishwasher, 4 ring gas hob with extractor fan over and low level oven, locally tiled walls.





Landing

Carpeted with obscured window to side and airing cupboard.

Bedroom

11' 6" x 10' 6" (3.51m x 3.20m)

Carpeted with window to rear and mirror fronted wardrobes.

Bedroom

11' 4" x 9' 0" (3.45m x 2.74m)

Carpeted with window outlook to front.

Bedroom

9' 0" x 6' 7" (2.74m x 2.01m)

Carpeted with window outlook to front.

Bedroom

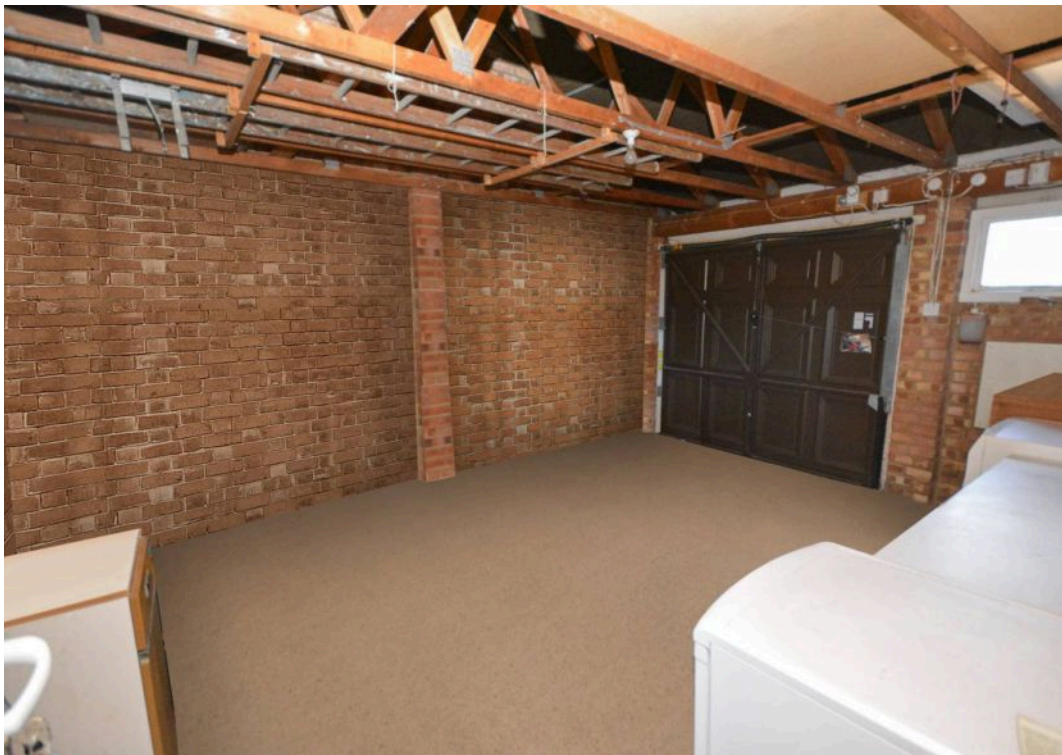
8' 3" x 7' 0" (2.51m x 2.13m)

Carpeted with window outlook to rear.

Shower Room

White suite comprising wash hand basin with mixer tap and vanity storage under, low level wc, walk in tiled shower cubicle, obscured window to side and locally tiled walls.



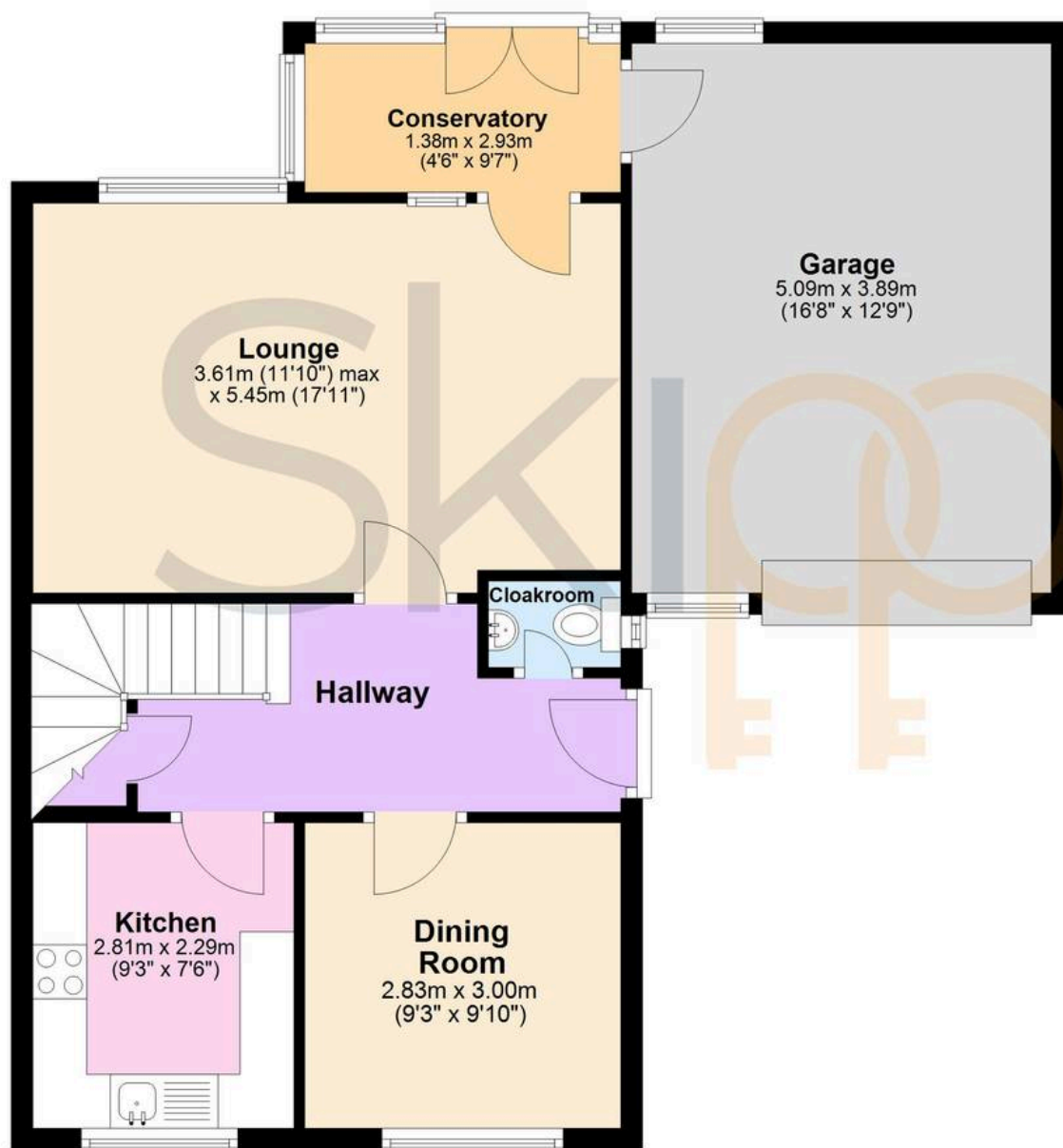






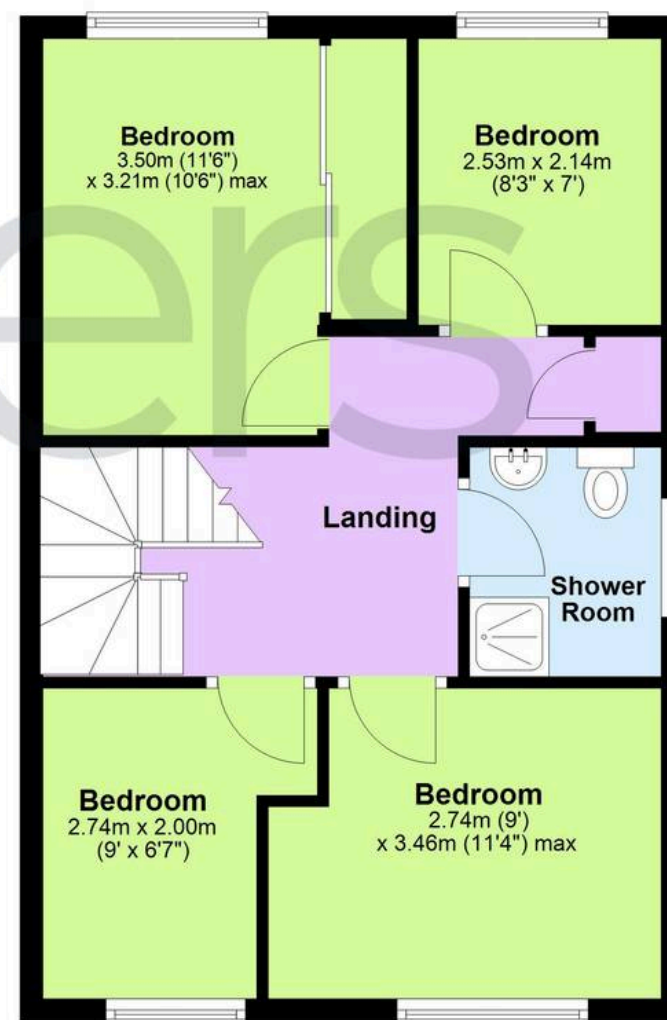
Ground Floor

Approx. 70.7 sq. metres (761.0 sq. feet)



First Floor

Approx. 36.4 sq. metres (392.3 sq. feet)



Total area: approx. 107.1 sq. metres (1153.3 sq. feet)



Skippers Estate Agents – Ashford

5 Kings Parade High Street, Ashford – TN24 8TA

01233 632383

ashford@skippers-ea.co.uk

skippers-ea.co.uk



