



3 Christchurch Road, Ashford

Offers in Region of **£300,000**

Skippers

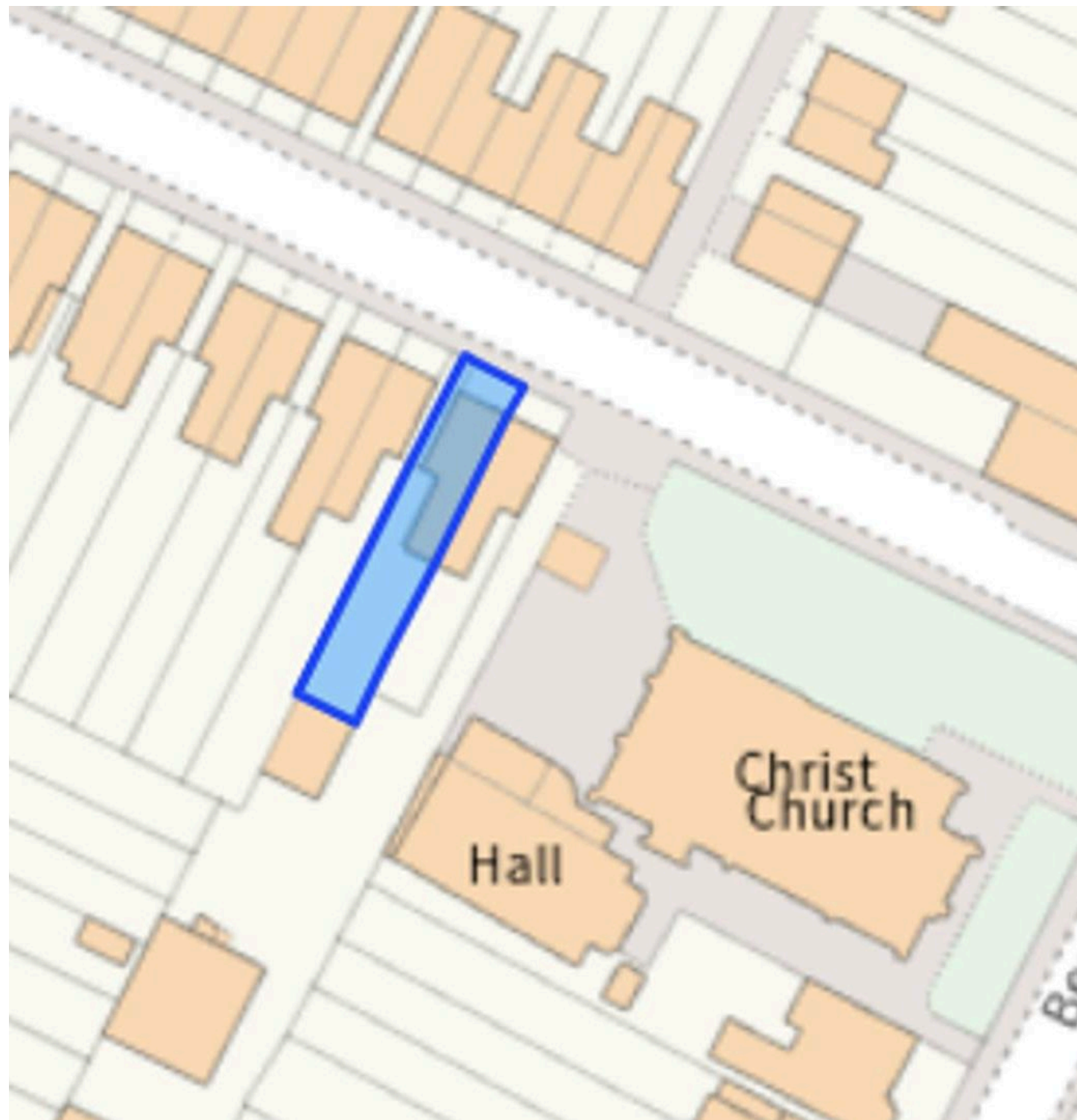
3 Christchurch Road

Ashford, Ashford

Charming 3-bed Edwardian semi in popular Christchurch Rd. Bay fronted lounge, dining room, ground floor bath. Enclosed garden. Close to train station, park, town centre. Ideal lifestyle choice. Council Tax band: C

Tenure: Freehold

- Attractive 3 Bedroom Edwardian Semi-Detached Family Home
- Bay fronted Lounge with feature fireplace and further Dining Room
- Ground Floor Bathroom
- Enclosed Rear Garden
- Walking Distance to International Train Station, Victoria Park, Town Centre & McArthurGlenn Designer Outlet
- Gas Fired Central Heating
- Popular Christchurch Road Location



Hallway

With stairs to first floor and access through to lounge and dining room.

Lounge

13' 0" x 10' 10" (3.96m x 3.30m)

Bay window outlook to front, picture rails and feature fireplace.

Dining Room

12' 2" x 11' 9" (3.72m x 3.58m)

Window to rear, understairs storage cupboard.

Kitchen

9' 10" x 8' 6" (3.00m x 2.59m)

Range of shaker style cupboards and drawers beneath mottled effect worktops, window to side, stainless steel sink with mixer tap and drainer, range of wall mounted units with display unit, electric hob with extractor fan over and double eye level oven.

Rear Lobby

Rear lobby with cupboard housing plumbing and space for washing machine & tumble dryer and door leading to rear garden.

Bathroom

White suite comprising low level wc, pedestal wash hand basin with mixer tap, low level wc, panelled bath with shower screen mixer tap and shower attachment, locally tiled walls and obscured window to side and vanity storage cupboard.





Landing

Carpeted with access to loft and bedrooms.

Bedroom

15' 2" x 10' 8" (4.62m x 3.25m)

Carpeted, picture rails with 2 windows to front with freestanding mirrored wardrobe.

Bedroom

11' 11" x 9' 1" (3.63m x 2.77m)

Carpeted with picture rails and window to rear.

Bedroom

13' 9" x 8' 5" (4.19m x 2.57m)

Carpeted with window to rear and cupboard housing wall mounted boiler.

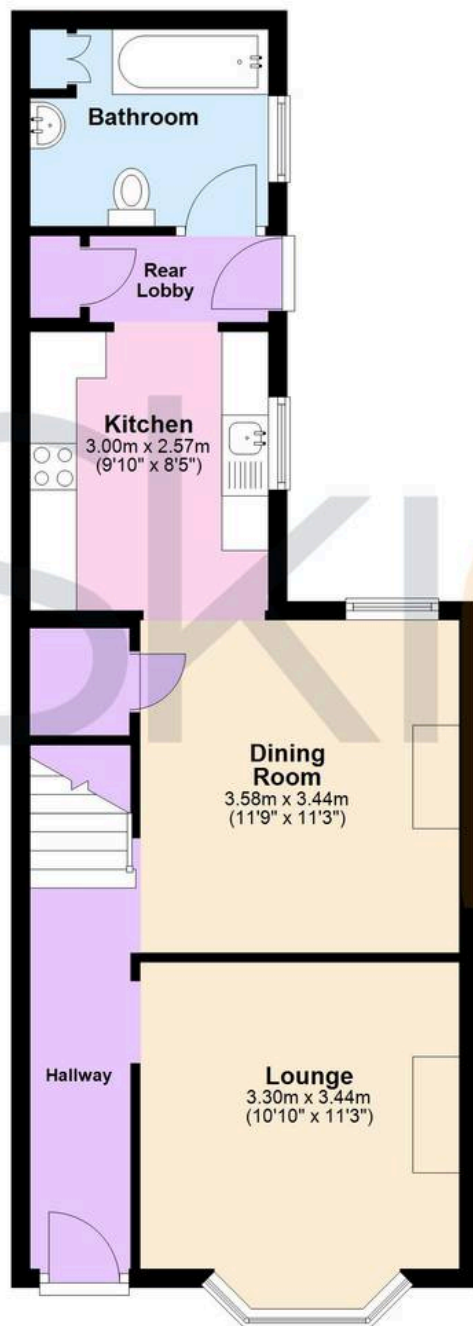






Ground Floor

Approx. 48.8 sq. metres (525.3 sq. feet)



First Floor

Approx. 43.3 sq. metres (465.7 sq. feet)



Total area: approx. 92.1 sq. metres (991.0 sq. feet)



Skippers Estate Agents – Ashford

5 Kings Parade High Street, Ashford – TN24 8TA

01233 632383

ashford@skippers-ea.co.uk

skippers-ea.co.uk

Skippers

