



12 Waterside, Willesborough
£375,000

12 Waterside

Willesborough, Ashford

An extended three-bedroom semi detached house, enjoying spacious light-filled rooms throughout, downstairs WC, driveway parking for numerous cars plus garage, enclosed garden, conveniently positioned within Willesborough.

Council Tax band: C

Tenure: Freehold

- Three-bedroom extended home
- Two reception rooms
- Spacious light-filled rooms throughout
- Garage & Driveway parking for up to 3 cars
- Close-by to Willesborough Infant & Junior Schools
- Easy access to M20 and William Harvey Hospital
- Just a few minutes walk from Willesborough Recreation Ground



Hallway

uPVC door to the front with sidelight window, utility space with plumbing for washing machine, stairs to the first floor, radiator, fitted carpet.

Lounge/Diner

'L' shaped room with doors and windows to the rear opening to the garden, radiators, fireplace with electric fire inset, laminate wood flooring.

Kitchen

Fitted kitchen comprising matching wall and base units with work surfaces over, inset 1.5 now stainless steel sink/drain, electric cooker, plumbing and space for washing machine, 'American' style fridge/freezer. Under-stairs pantry type cupboard. Tiled splash back and flooring.

Rear Lobby

uPVC stable door leading out to the garden, radiator, vinyl flooring.

Reception Room

Dual aspect with windows to the front and side, radiator, fitted carpet.

Cloakroom

Window to the side, WC, wash basin, towel radiator, tiled walls and vinyl flooring.





Landing

Doors to each room, loft access, cupboard housing central heating boiler, radiator, fitted carpet.

Bedroom 1

Window to the rear, built-in wardrobe, radiator, fitted carpet.

Bedroom 2

Window to the rear, radiator, fitted carpet.

Bedroom 3

Window to the front, built-in wardrobe, radiator, fitted carpet.

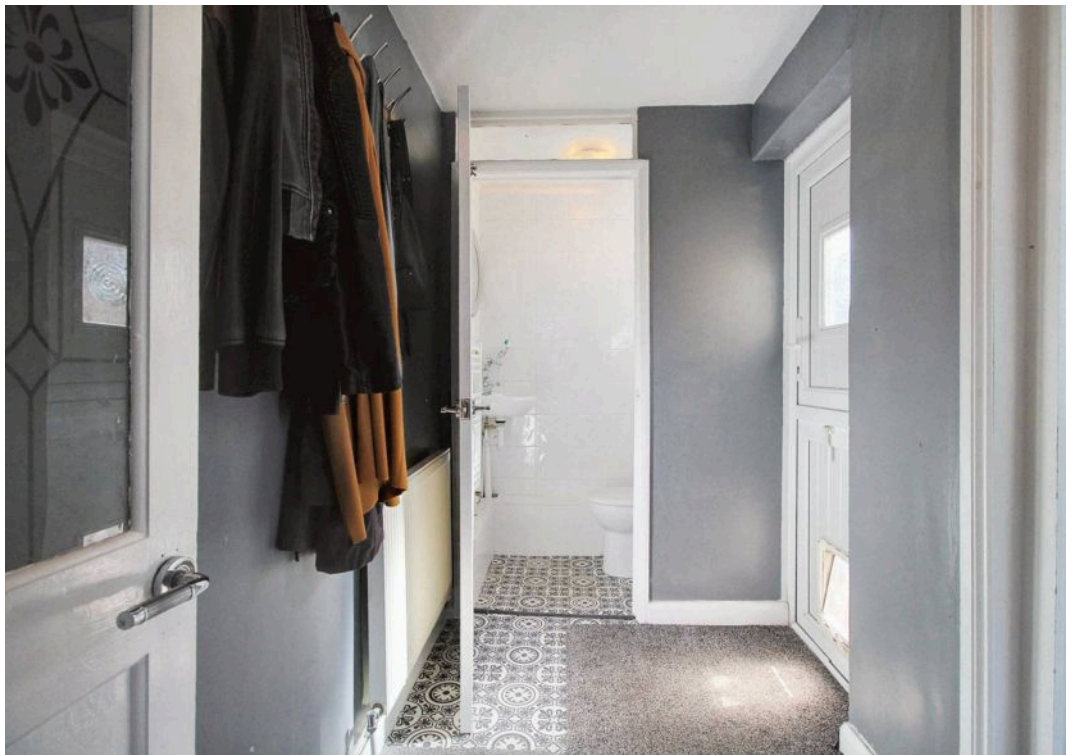
Separate WC

Window to the front, WC, radiator, fitted carpet.

Bathroom

Comprising a bath with mixer taps, shower over and glass shower screen, wash basin with storage beneath, towel radiator, tiled walls and flooring.













Ground Floor

Approx. 56.8 sq. metres (611.5 sq. feet)



First Floor

Approx. 43.5 sq. metres (468.1 sq. feet)



Total area: approx. 100.3 sq. metres (1079.7 sq. feet)



Skippers Estate Agents – Ashford

5 Kings Parade High Street, Ashford – TN24 8TA

01233 632383

ashford@skippers-ea.co.uk

skippers-ea.co.uk



