



74 Francis Road, Ashford

Offers in Region of **£290,000**

Skippers

74 Francis Road

Ashford, Ashford

Charming 3-bed end of terrace house with NO ONWARD CHAIN. Well-designed layout, gas central heating. Close to amenities. Spacious rear garden. Perfect blend of comfort and convenience. Council Tax band: B

Tenure: Freehold

- NO ONWARD CHAIN
- Spacious 3 Bedroom End of Terraced Property
- Ground Floor Family Bathroom & Additional Shower Room Located to First Floor
- Separate Lounge & Dining Room
- Large Rear Garden
- Walking Distance to International Train Station, Victoria Park, Town Centre & McArthurGlenn Designer Outlet
- Gas Fired Central Heating



Hallway

With stairs leading to first floor and doors through to lounge and dining room.

Lounge

11' 6" x 10' 8" (3.51m x 3.25m)

Bay window outlook to front with feature fireplace.

Dining Room

13' 7" x 11' 8" (4.14m x 3.56m)

Window to rear, understairs recess, built in storage cupboard and potential for fireplace.

Kitchen

Range of white shaker style cupboards and drawers beneath worksurfaces with additional wall mounted units. Wall mounted boiler for hot water and central heating, stainless steel sink with mixer tap and drainer, space for freestanding oven, space and plumbing for washing machine, window to side.

Rear Lobby

With door leading to garden and storage cupboard.

Bathroom

White suite comprising low level wc, pedestal wash hand basin, panelled bath, obscured window to side and locally tiled walls.





Landing

Bedroom

13' 11" x 11' 6" (4.24m x 3.51m)

Carpeted with 2 windows to front.

Bedroom

11' 8" x 8' 8" (3.56m x 2.64m)

Carpeted with window to rear.

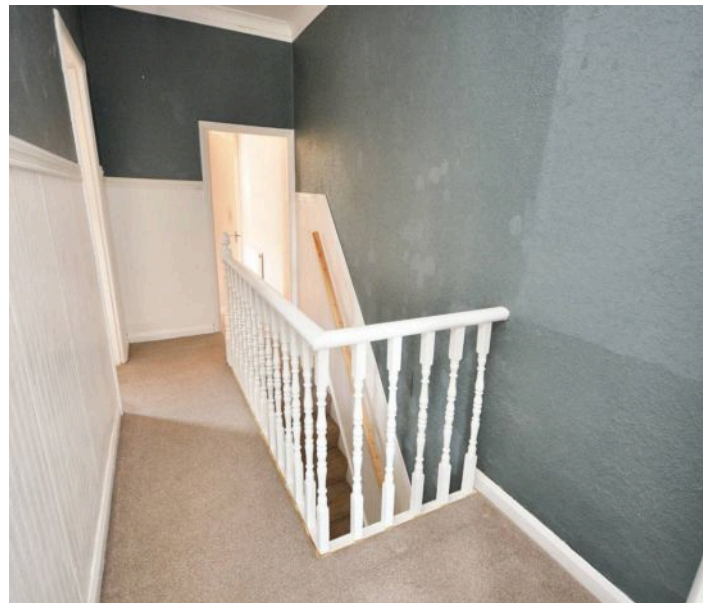
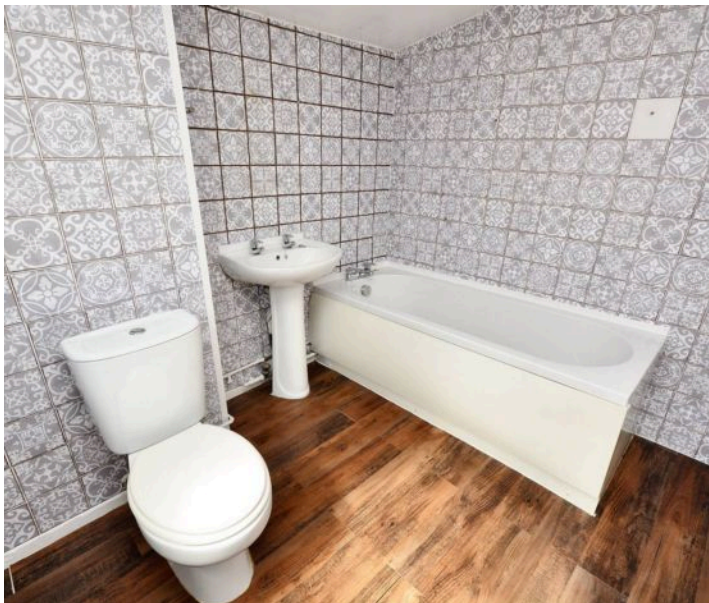
Bedroom

8' 8" x 8' 4" (2.64m x 2.54m)

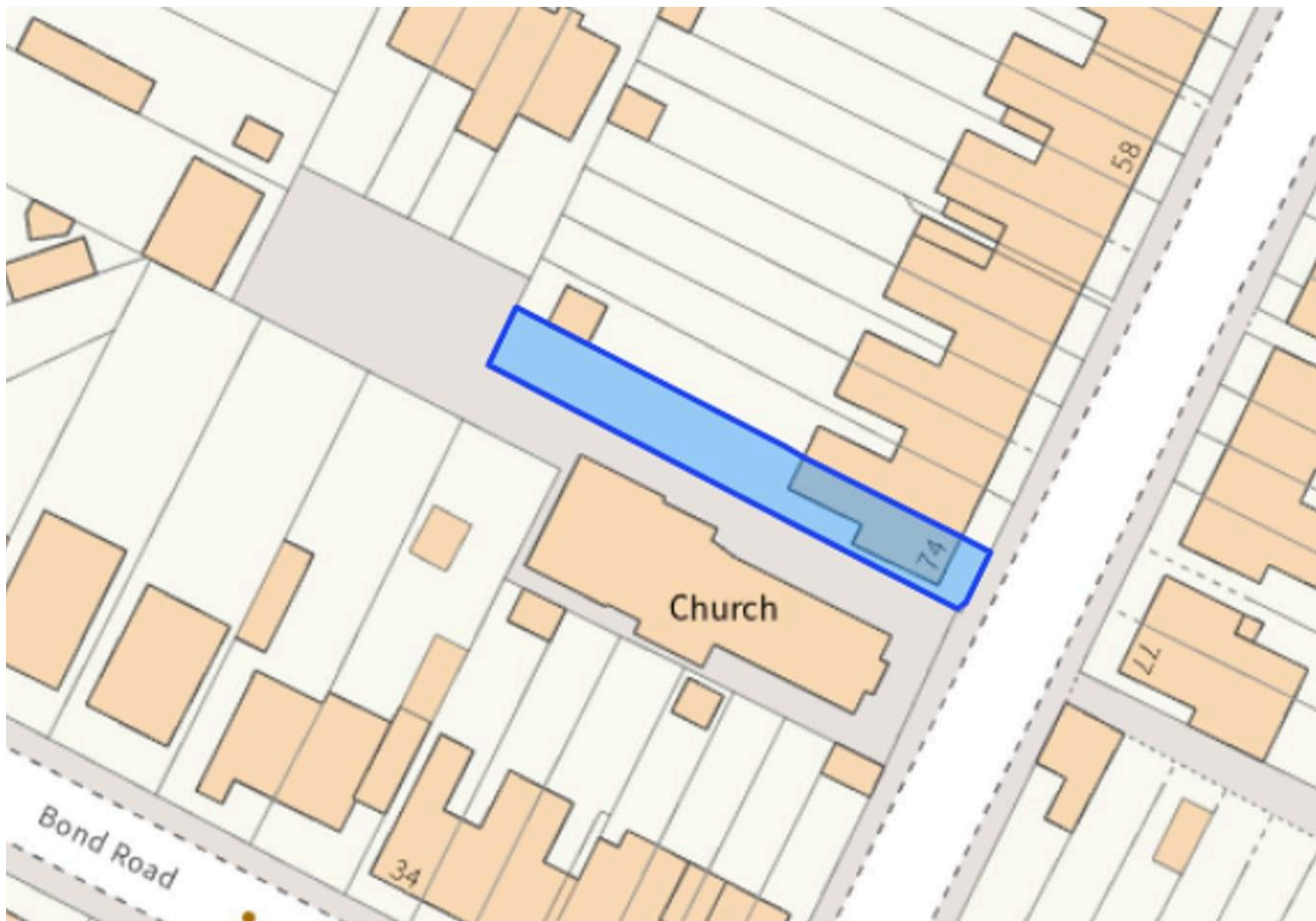
Window to side, storage cupboard and door through to shower room.

Shower Room

Low level wc, pedestal wash hand basin, tiled shower cubicle, obscured window to rear, locally tiled walls.

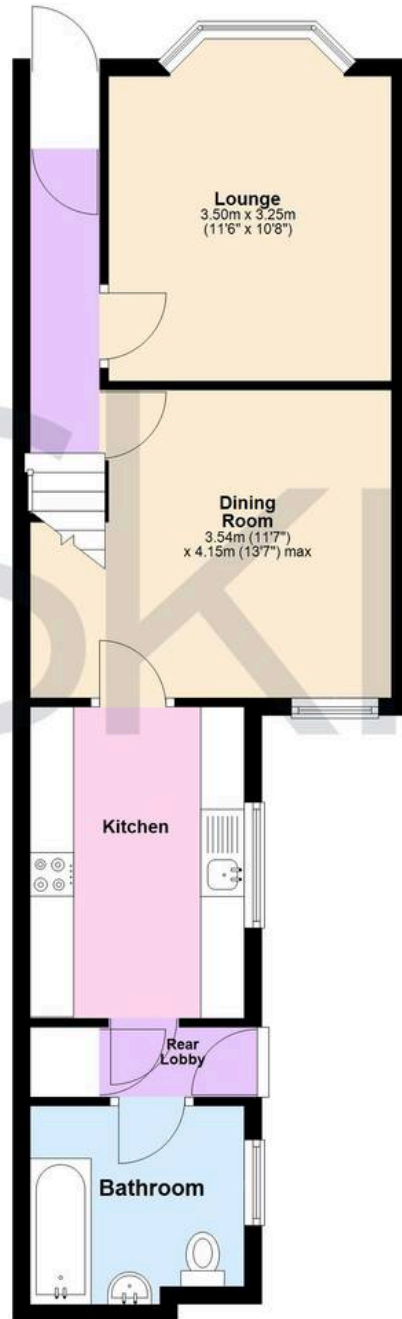






Ground Floor

Approx. 32.7 sq. metres (352.1 sq. feet)



First Floor

Approx. 42.5 sq. metres (457.1 sq. feet)



Total area: approx. 75.2 sq. metres (809.2 sq. feet)



Skippers Estate Agents – Ashford

5 Kings Parade High Street, Ashford – TN24 8TA

01233 632383

ashford@skippers-ea.co.uk

skippers-ea.co.uk



