



.Esperanza., Hospital Hill, Hythe

Offers in Region of £525,000

Skippers

.Esperanza., Hospital Hill

Hythe

Exciting 4-bed detached bungalow in sought-after location with massive potential. Offers around £525,000. Requires updating. Possible building plot. Moments from the seafront. Sprawling outdoor space. Off-road parking. Ideal for customisation and development.

Council Tax band: D

Tenure: Freehold

- Offers in Region of £525,000
- Detached Bungalow
- Four Bedrooms
- Large Plot Surrounding Property
- Updating Required Inside & Out
- Potential Building Plot (Subject to Local Planning)
- Short Walks to Seafront and Royal Military Canal
- Sought After Location



Porch

10' 11" x 4' 8" (3.32m x 1.41m)

UPVC front door with small frosted window to the side.

Carpeted floor coverings, coving and doors to:-

Lounge

13' 6" x 20' 7" (4.12m x 6.28m)

UPVC double glazed window to the front of the property with carpeted floor coverings, two radiators, coving and open plan to:-

Dining Room

24' 10" x 11' 1" (7.58m x 3.39m)

UPVC double glazed window to the side of the property with metal double glazed door out to the garden. Carpeted floor covering, coving, loft hatch and radiator. Doors to:-

Kitchen / Breakfast

28' 5" x 10' 7" (8.65m x 3.22m)

Triple aspect room with wooden glazed windows to the rear and both sides of the property. Small side porch with wooden glazed door to the front. Wall and base units with space for appliances, radiator and vinyl flooring.

Bedroom

16' 7" x 14' 6" (5.06m x 4.42m)

UPVC double glazed bay windows and door out to garden with carpeted floor coverings, coving and two radiators.

Bedroom

11' 11" x 10' 4" (3.62m x 3.16m)

Dual aspect room with UPVC double glazed windows to side and front. Carpeted floor coverings, coving and radiator.

Bedroom

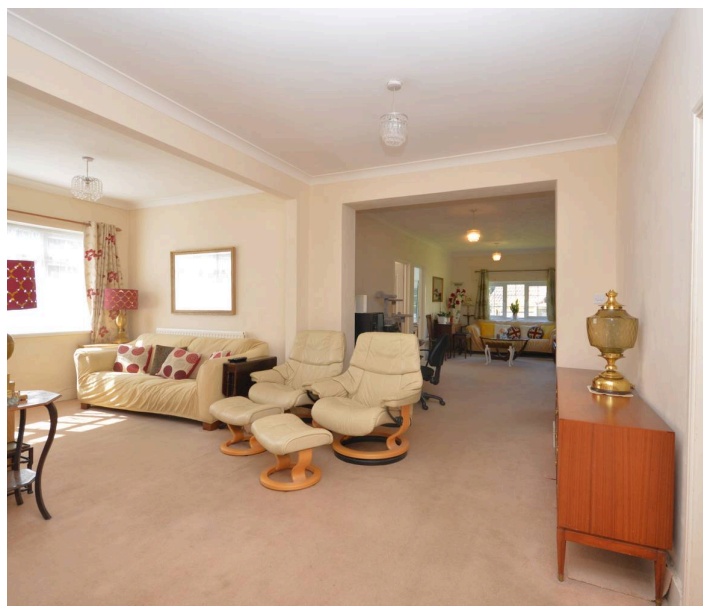
11' 4" x 10' 2" (3.45m x 3.11m)

UPVC double glazed window to the front of the property with carpeted floor coverings, coving and a radiator.

Bedroom

10' 1" x 9' 11" (3.08m x 3.02m)

UPVC double glazed frosted window to the front of the property with carpeted floor coverings and a radiator.





Porch

10' 11" x 4' 8" (3.32m x 1.41m)

UPVC front door with small frosted window to the side.
Carpeted floor coverings, coving and doors to:-

Lounge

13' 6" x 20' 7" (4.12m x 6.28m)

UPVC double glazed window to the front of the property with carpeted floor coverings, two radiators, coving and open plan to:-

Dining Room

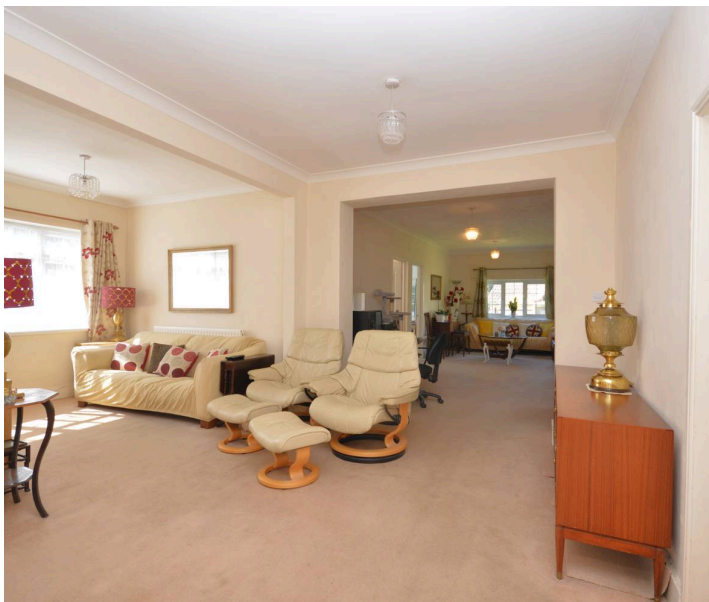
24' 10" x 11' 1" (7.58m x 3.39m)

UPVC double glazed window to the side of the property with metal double glazed door out to the garden. Carpeted floor covering, coving, loft hatch and radiator. Doors to:-

Kitchen / Breakfast

28' 5" x 10' 7" (8.65m x 3.22m)

Triple aspect room with wooden glazed windows to the rear and both sides of the property. Small side porch with wooden glazed door to the front. Wall and base units with space for appliances, radiator and vinyl flooring.



Bedroom

16' 7" x 14' 6" (5.06m x 4.42m)

UPVC double glazed bay windows and door out to garden with carpeted floor coverings, coving and two radiators.

Bedroom

11' 11" x 10' 4" (3.62m x 3.16m)

Dual aspect room with UPVC double glazed windows to side and front. Carpeted floor coverings, coving and radiator.

Bedroom

11' 4" x 10' 2" (3.45m x 3.11m)

UPVC double glazed window to the front of the property with carpeted floor coverings, coving and a radiator.

Bedroom

Ground Floor

Approx. 133.9 sq. metres (1440.9 sq. feet)



Total area: approx. 133.9 sq. metres (1440.9 sq. feet)



Skippers Estate Agents Cheriton/Folkestone

30 High Street, Cheriton - CT19 4ET

01303 279955

cheriton@skippers-ea.co.uk

skippers-ea.co.uk

Skippers

