



Poplar Lane, Lydd

Romney Marsh

£280,000



18 Poplar Lane

Lydd, Romney Marsh

Charming semi-detached bungalow with 2 bedrooms, ideal for first-time buyers or investors. Spacious living room, well-equipped kitchen, beautiful garden, garage, driveway, close to amenities. Schedule a viewing today!

Council Tax band: C

Tenure: Freehold

EPC Energy Efficiency Rating: D

EPC Environmental Impact Rating: E

- Driveway and Garage
- Chain Free
- Bungalow
- No through road
- Great location
- Close to amenities
- Front and rear garden
- Two double bedrooms

**Kitchen**

9' 11" x 7' 5" (3.01m x 2.26m)

Lounge

15' 9" x 12' 6" (4.80m x 3.80m)

Bedroom 1

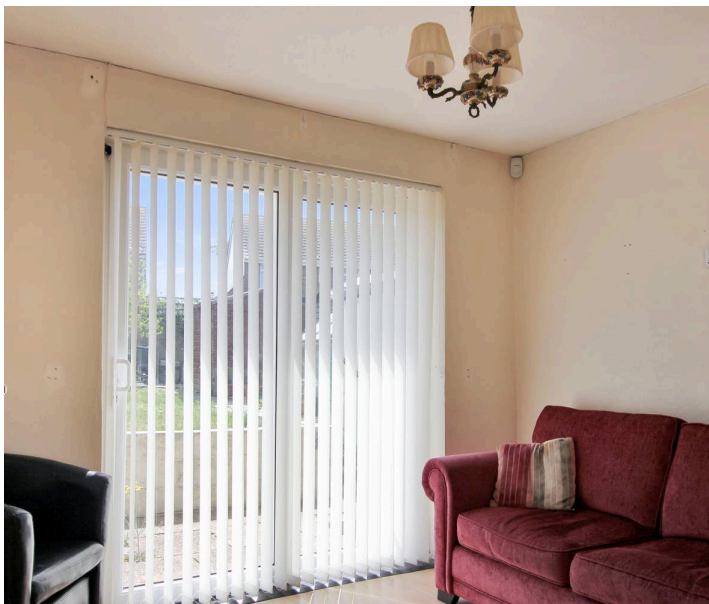
13' 5" x 9' 2" (4.10m x 2.80m)

Bedroom2

10' 0" x 8' 11" (3.04m x 2.73m)

Bathroom

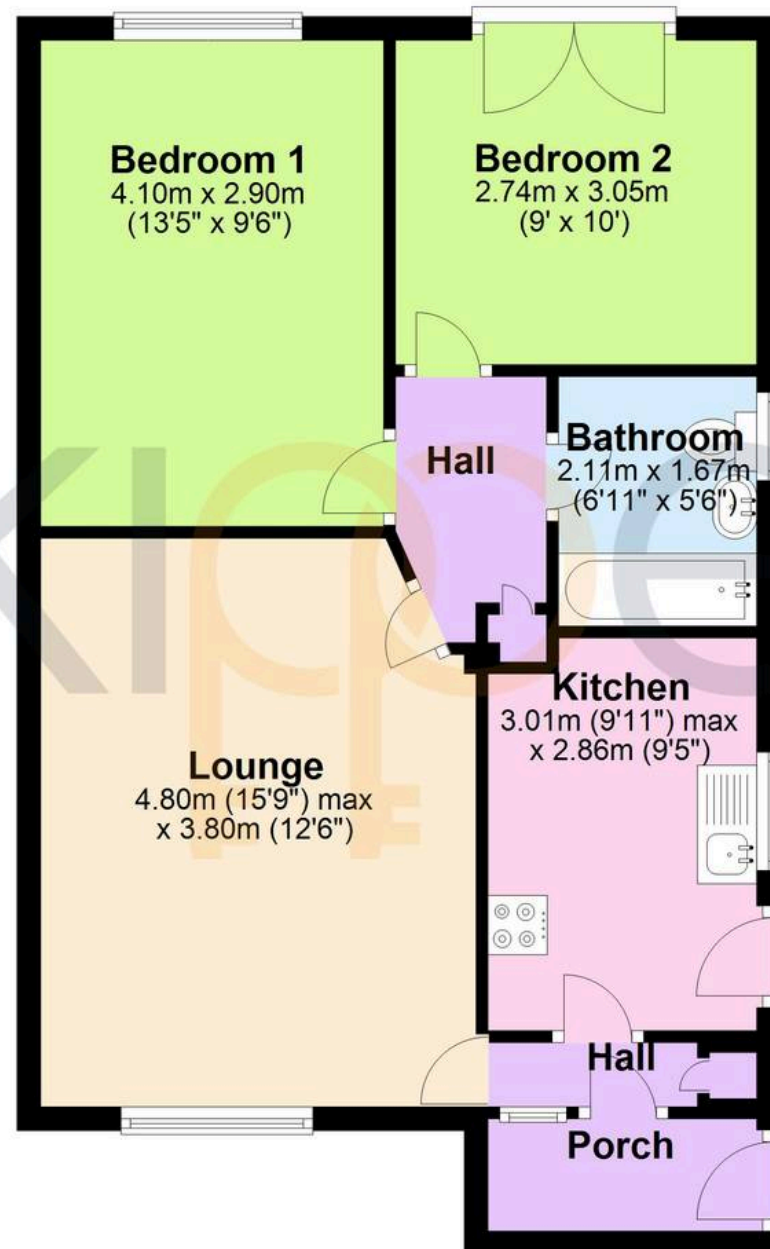
6' 11" x 5' 6" (2.10m x 1.67m)





Ground Floor

Approx. 57.9 sq. metres (622.8 sq. feet)



Total area: approx. 57.9 sq. metres (622.8 sq. feet)



Skippers Estate Agents – New Romney

Andrew & Co, 55 High Street – TN28 8AH

01797 362898

newromney@skippers-ea.co.uk

skippers-ea.co.uk

Skippers