



Coast Drive, Lydd On Sea

Romney Marsh

Guide Price **£435,000 – £450,000**



Coast Drive

Lydd On Sea, Romney Marsh

Charming 3-bed detached bungalow in Lydd on Sea, with sea views in front and nature reserve sights in rear. Spacious rooms, pretty garden, decked area, local amenities nearby. Perfect coastal living!

Council Tax band: D

Tenure: Freehold

EPC Energy Efficiency Rating: D

EPC Environmental Impact Rating: F

- Three Bedroom
- Two Reception Rooms
- Detached Bungalow
- Open Views to Rear
- Chain Free
- Sea Views to Front



Porch

Hallway

Lounge/Diner

13' 5" x 22' 2" (4.09m x 6.75m)

Living Room

11' 6" x 11' 6" (3.50m x 3.50m)

Kitchen

10' 4" x 8' 9" (3.14m x 2.67m)

Bedroom

11' 8" x 10' 4" (3.56m x 3.16m)

Bedroom

14' 10" x 9' 3" (4.53m x 2.82m)

Bedroom

7' 11" x 8' 2" (2.42m x 2.50m)

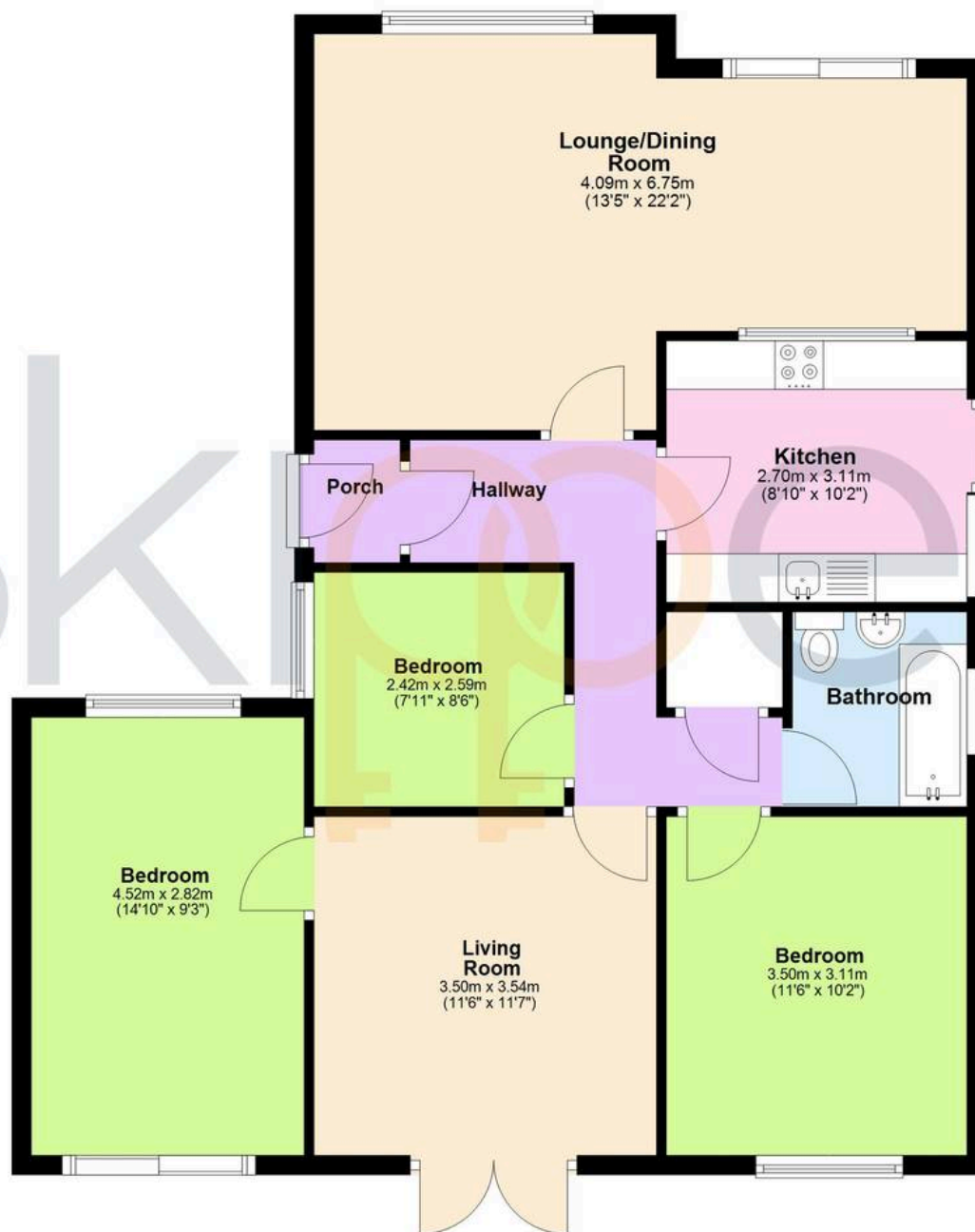
Bathroom





Ground Floor

Approx. 90.3 sq. metres (972.3 sq. feet)



Total area: approx. 90.3 sq. metres (972.3 sq. feet)



Skippers Estate Agents – New Romney

55 High Street – TN28 8AH

01797 362898

newromney@skippers-ea.co.uk

skippers-ea.co.uk

Skippers