



48 Tunbridge Way, Ashford
£230,000

Skippers

48 Tunbridge Way

Ashford, Ashford

A two-bedroom freehold coach house, located within popular Singleton Hill position, enjoying an en-suite to the main bedroom, modern kitchen and car port parking.

Council Tax band: B

Tenure: Freehold

- Freehold coach house
- Two bedrooms
- En-suite and fitted wardrobes to Bedroom 1
- Car port parking beneath
- Walking distance of local schooling and Singleton Environment Centre
- Popular Singleton Hill location
- Easy access into Ashford Town Centre



Entrance Hallway

Composite door to the front, stairs to first floor, space to hang coats and store shoes with fitted carpet to the stairs and hallway.

Lounge

12' 2" x 14' 3" (3.70m x 4.34m)

Juliet balcony to the rear, two electric heaters, and laminate wood flooring. Door to hallway and open to the Kitchen.

Kitchen

11' 1" x 6' 5" (3.38m x 1.96m)

Fitted kitchen comprising wall and base units with work surfaces over, inset 1.5 bowl sink/drainage, built-in appliances including an eye-level double oven, 4 zone electric hob with extractor hood above and dishwasher. Plumbing and space for washing machine. Window to the rear and tiled flooring.

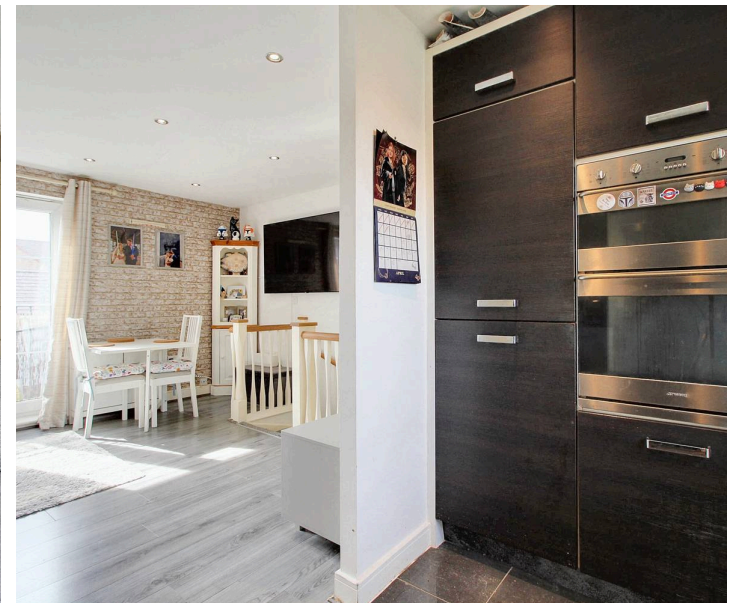
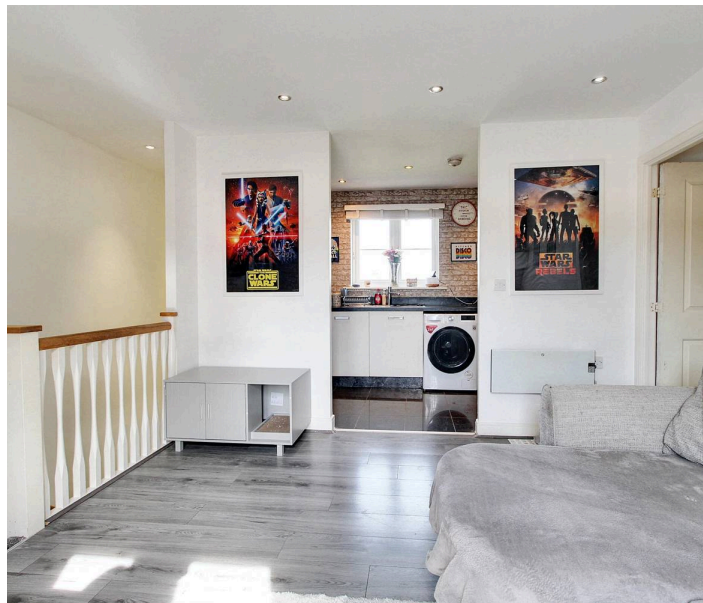
Hallway

Doors to both bedrooms and bathroom, loft access and laminate wood flooring.

Bedroom 1

8' 5" x 13' 3" (2.56m x 4.05m)

Juliet balcony to the rear, built-in radiators, electric heater and fitted carpet.





En Suite

Comprising a square shower enclosure with thermostatically controlled shower, WC, wash basin, extractor fan, shaver socket, tiled walls to the shower enclosure and vinyl flooring. Window to the front.

Bedroom 2

7' 7" x 8' 5" (2.31m x 2.57m)

Window to the rear, electric heater and fitted carpet.

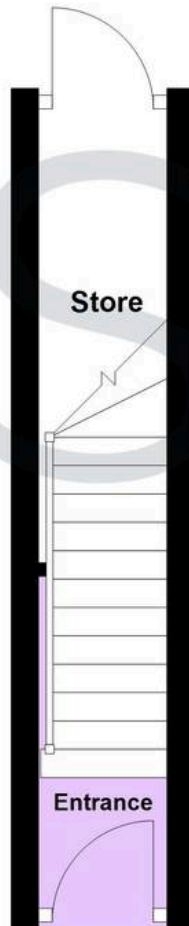
Bathroom

Comprising a bath with mixer tap and thermostatically controlled shower with glass screen, WC, wash basin, extractor fan, electric towel heater, wall tiling around the bath and laminate wood flooring. Window to the front and airing cupboard housing hot water cylinder



Ground Floor

Approx. 5.4 sq. metres (58.4 sq. feet)



First Floor

Approx. 52.3 sq. metres (563.1 sq. feet)



Total area: approx. 57.7 sq. metres (621.5 sq. feet)



Skippers Estate Agents – Ashford

5 Kings Parade High Street, Ashford – TN24 8TA

01233 632383

ashford@skippers-ea.co.uk

skippers-ea.co.uk

Skippers

