



39 Damara Way, Kingsnorth

Offers in Region of **£340,000**

Skippers

39 Damara Way

Kingsnorth, Ashford

A well-presented, three bedroom semi-detached house, enjoying a low maintenance south-facing garden, modern fitted kitchen/diner, downstairs WC, en-suite to bedroom 1, garage and parking space for 1 car, located within the modern Bridgefield development.

Council Tax band: C

Tenure: Freehold

- Three-bedroom semi detached house
- Modern fitted kitchen
- En-suite to bedroom 1
- Downstairs WC
- Low maintenance south facing garden
- Garage & parking space for 1 car
- Bridgefield location
- Walking distance to Finberry Primary School



Entrance Hallway

Part glazed composite door to the front, stairs to the first floor, radiator and laminate wood flooring.

Cloakroom

Window to the front, WC, wash basin, extractor fan, radiator and tiled flooring.

Lounge

16' 2" x 12' 8" (4.92m x 3.85m)

Dual aspect with windows to the front and side, radiators.

Kitchen/Diner

14' 8" x 10' 7" (4.46m x 3.22m)

Modern fitted kitchen comprising matching wall and base units with worksurface over, inset 1.5 bowl stainless steel sink/drainer, built-in electric oven, 4-ring gas hob, extractor hood, washing machine, dishwasher and fridge/freezer. Window to the rear, doors opening to the garden, under-stairs cupboard, radiator and tiled flooring.

Landing

Doors to each room, loft access, airing cupboard and fitted carpet to the stairs and landing.





Bedroom 1

10' 4" x 9' 9" (3.15m x 2.98m)

Window to the front, built-in wardrobe, radiator and fitted carpet.

En-suite

Comprising a square shower enclosure with thermostatic shower, tiled walls and bi-folding glass door, WC, wash basin, extractor fan, radiator and tiled flooring.

Bedroom 2

9' 1" x 9' 3" (2.77m x 2.83m)

Window to the rear, radiator and fitted carpet.

Bedroom 3

6' 9" x 8' 10" (2.07m x 2.68m)

Window to the rear, radiator and fitted carpet.

Bathroom

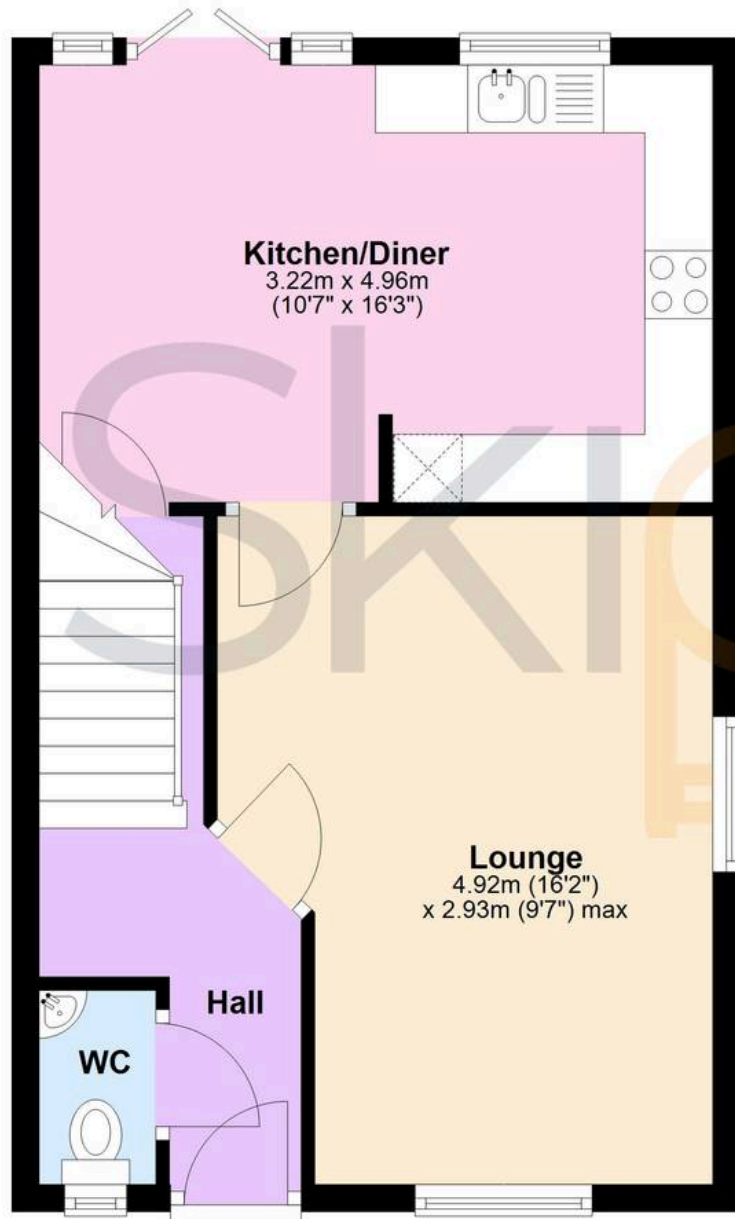
Comprising a bath with mixer taps, hand shower attachment and wall tiling, WC, wash basin, extractor fan, radiator and tiled flooring. Window to the side.





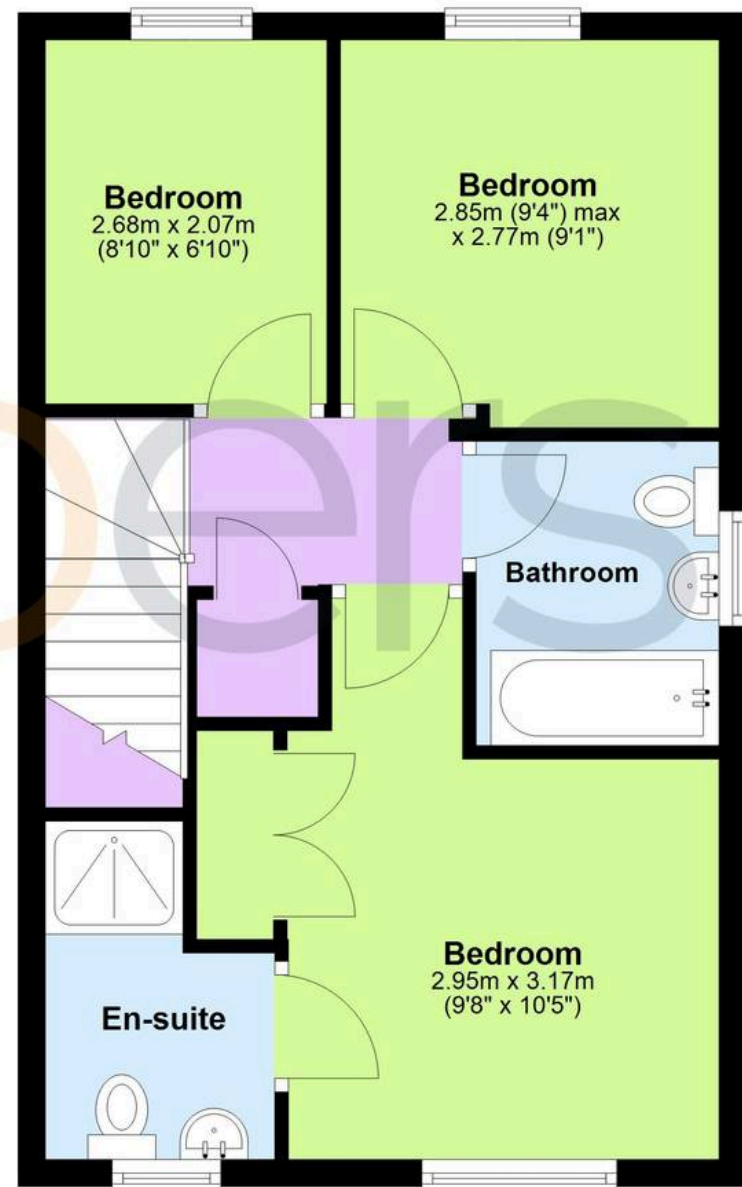
Ground Floor

Approx. 40.9 sq. metres (439.9 sq. feet)



First Floor

Approx. 40.9 sq. metres (439.9 sq. feet)



Total area: approx. 81.7 sq. metres (879.8 sq. feet)



Skippers Estate Agents – Ashford

5 Kings Parade High Street, Ashford – TN24 8TA

01233 632383

ashford@skippers-ea.co.uk

skippers-ea.co.uk

Skippers

