



Hulbury Cockreed Lane, New Romney

New Romney

£500,000



Hulbury Cockreed Lane

New Romney, New Romney

Immaculate 3-bed detached house in New Romney with spacious living areas, modern kitchen with large pantry, conservatory, two bathrooms, large garden, parking for multiple cars. Ideal location near town centre and schools. 1750 sqft. Contact for viewing. Council Tax band: E

Tenure: Freehold

EPC Energy Efficiency Rating: D

EPC Environmental Impact Rating:

- Three Bedroom Home
- Kitchen/Diner
- Large Pantry
- Immaculately Presented
- Ground Floor Bedroom
- Separate Living Room
- Generous Garden
- Chain Free



Porch

Entrance Hall

16' 1" x 7' 11" (4.90m x 2.42m)

Living Room

15' 11" x 13' 5" (4.85m x 4.09m)

Conservatory

7' 4" x 21' 4" (2.23m x 6.49m)

Kitchen

11' 11" x 13' 0" (3.62m x 3.97m)

Dining Area

11' 11" x 13' 1" (3.62m x 3.98m)

Bedroom

11' 8" x 11' 2" (3.56m x 3.41m)

Bathroom

7' 7" x 7' 1" (2.31m x 2.16m)

Landing

9' 5" x 15' 1" (2.86m x 4.60m)

Bedroom

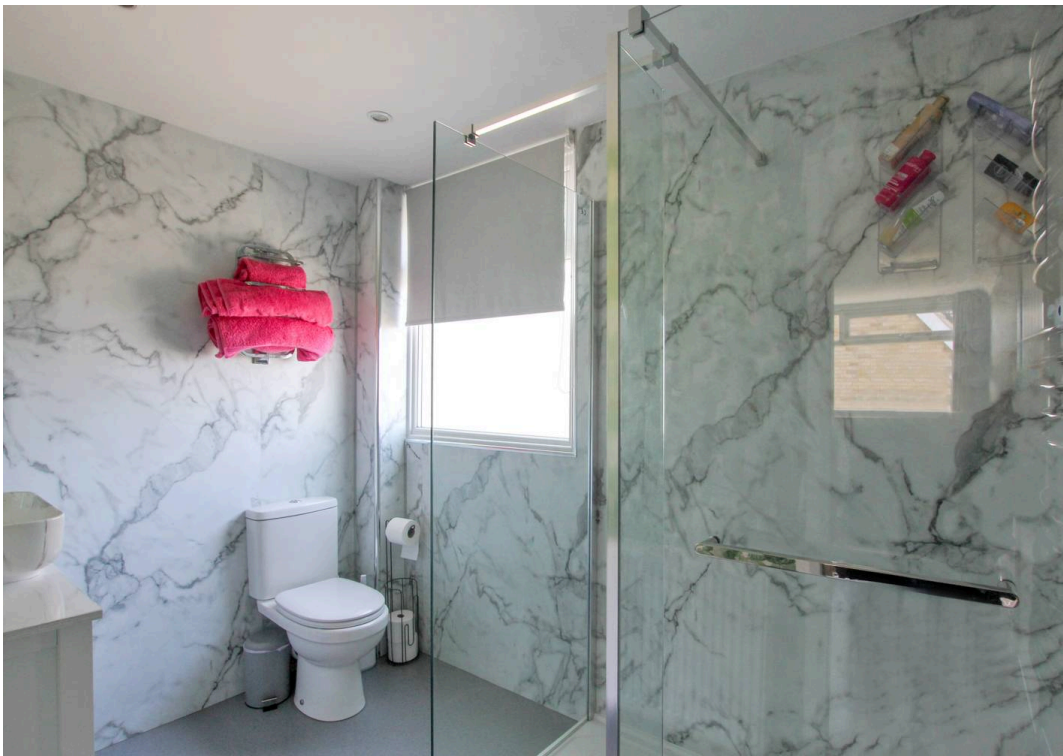
11' 11" x 12' 0" (3.63m x 3.65m)

Bedroom

12' 2" x 11' 11" (3.71m x 3.63m)

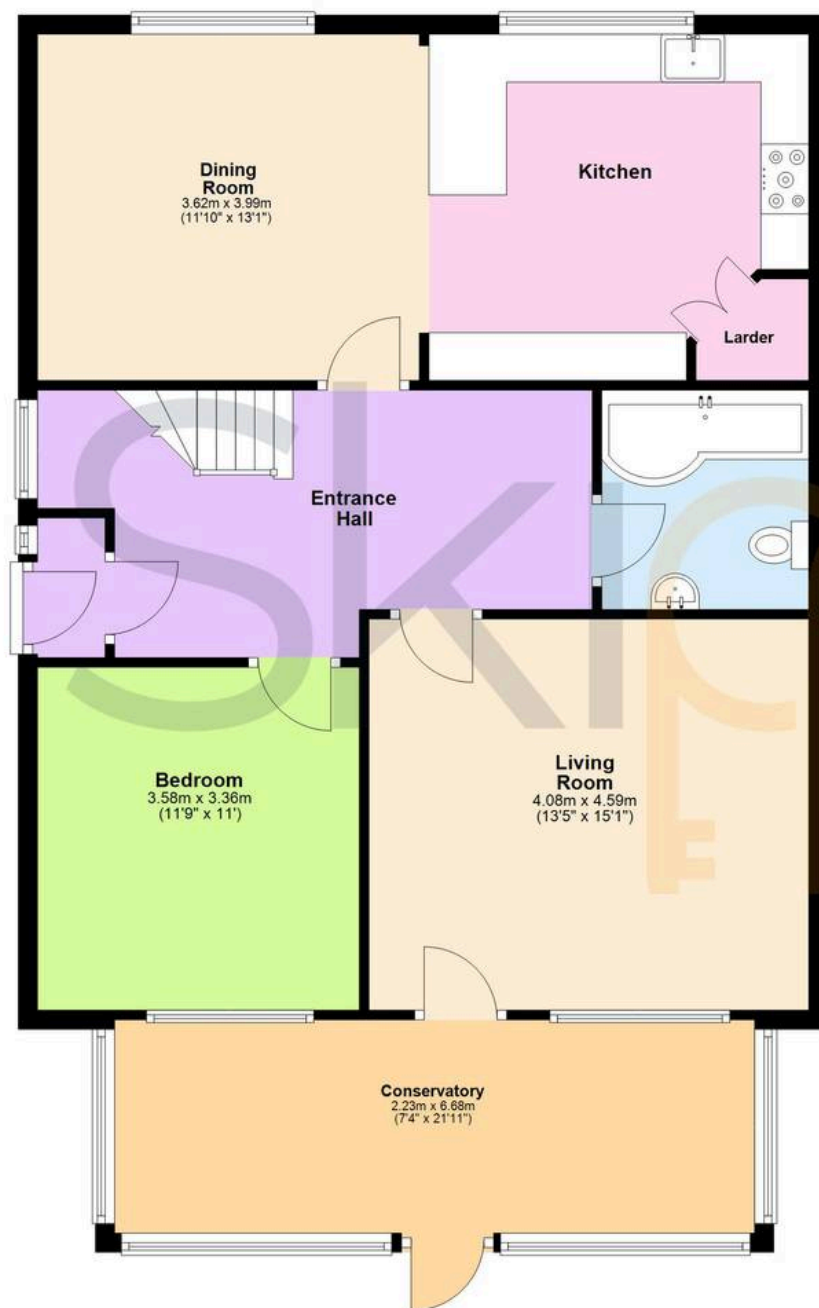
Shower Room





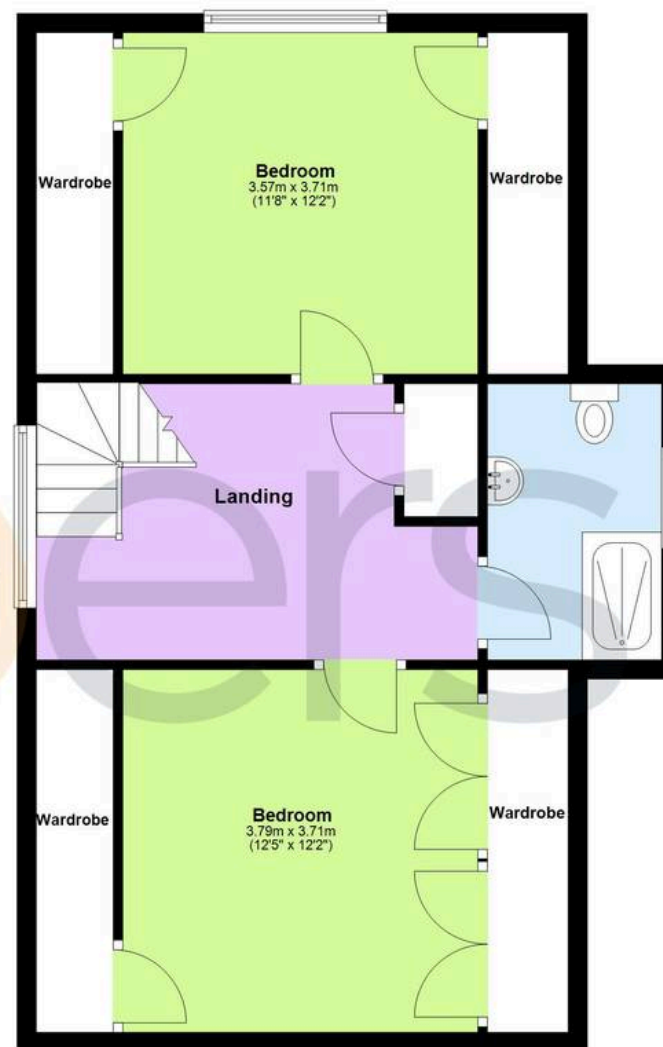
Ground Floor

Approx. 97.7 sq. metres (1051.1 sq. feet)



First Floor

Approx. 60.8 sq. metres (654.5 sq. feet)



Total area: approx. 158.5 sq. metres (1705.6 sq. feet)



Skippers Estate Agents – New Romney

Andrew & Co, 55 High Street – TN28 8AH

01797 362898

newromney@skippers-ea.co.uk

skippers-ea.co.uk

Skippers