



77 Conningbrook Avenue, Kennington

Offers in Region of **£350,000**

Skippers

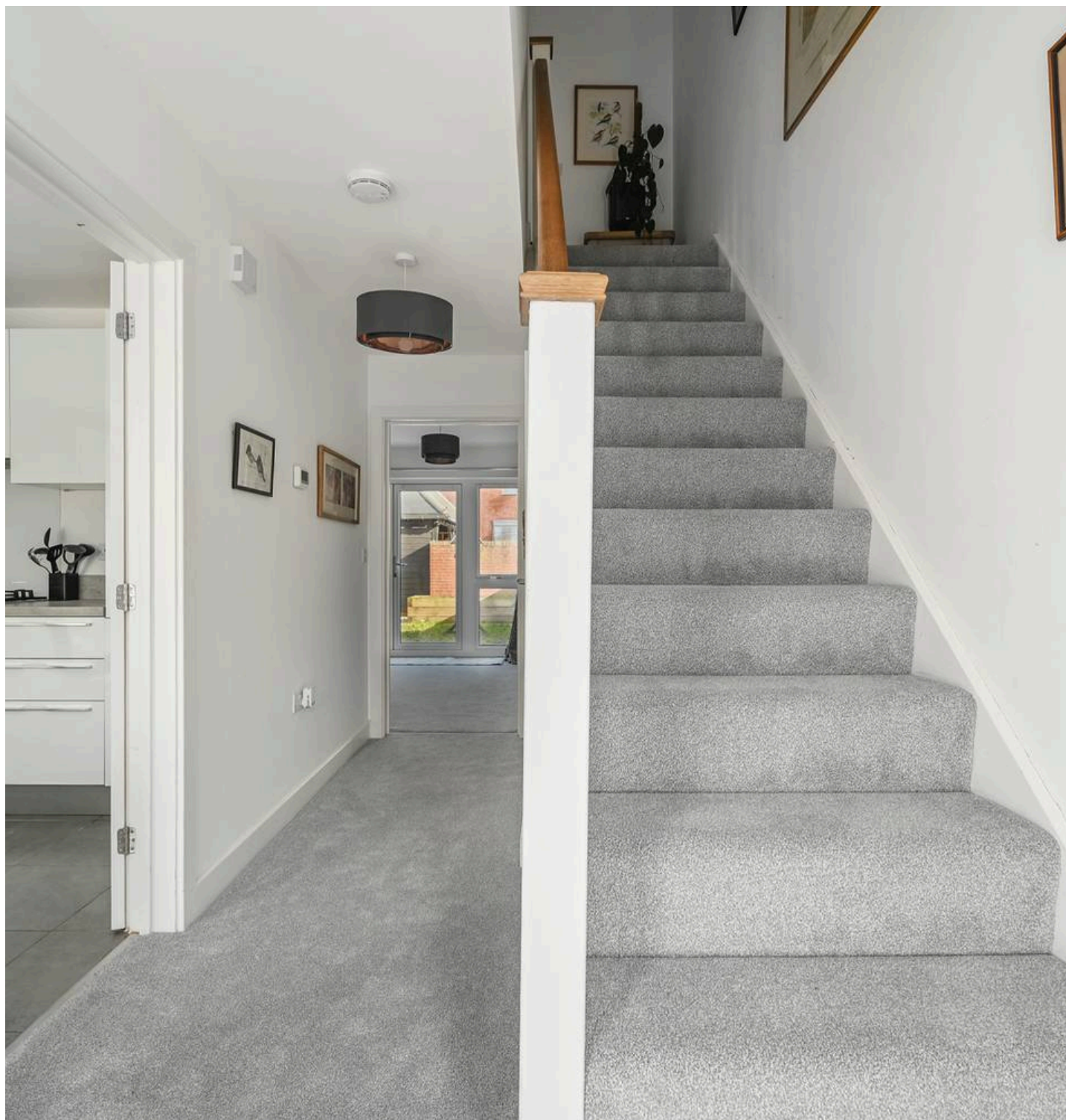
77 Conningbrook Avenue

Kennington, Ashford

Exquisite 3-bed mid-terrace in Conningbrook Lakes, Kennington. Built in 2021 with NHBC warranty. Modern kitchen, en-suite master, near hospital. Charming low maintenance garden with carport and driveway parking. Ideal blend of comfort and convenience. Council Tax band: D

Tenure: Freehold

- Well Presented 3 Bedroom Property
- 2021 Construction with Balance of 10 year NHBC
- Modern Fitted Kitchen/Diner & Spacious Lounge to Rear
- En-suite to Master Bedroom
- Popular Conningbrook Lakes Development on outskirts of Kennington & Willesborough with excellent access to William Harvey Hospital
- Carport providing parking for 2 Vehicles
- Enclosed Low Maintenance Rear Garden
- Excellent First Time Buy or Buy to Let Investment
- Cloakroom



Hallway

Carpeted with stairs leading to first floor.

Cloakroom

Low level wc, wash hand basin with mixer tap and tiled splashback, towel radiator.

Lounge

17' 5" x 13' 5" (5.31m x 4.09m)

Carpeted and patio doors leading to rear garden.

Kitchen/Diner

13' 4" x 10' 2" (4.06m x 3.10m)

Range of white gloss fronted units beneath work surfaces with additional wall mounted units. Integrated fridge/freezer, washing/dryer and dishwasher. Gas hob with extractor fan over and low level oven. Window outlook to front and inset spotlights. Stainless steel sink with mixer tap and drainer.

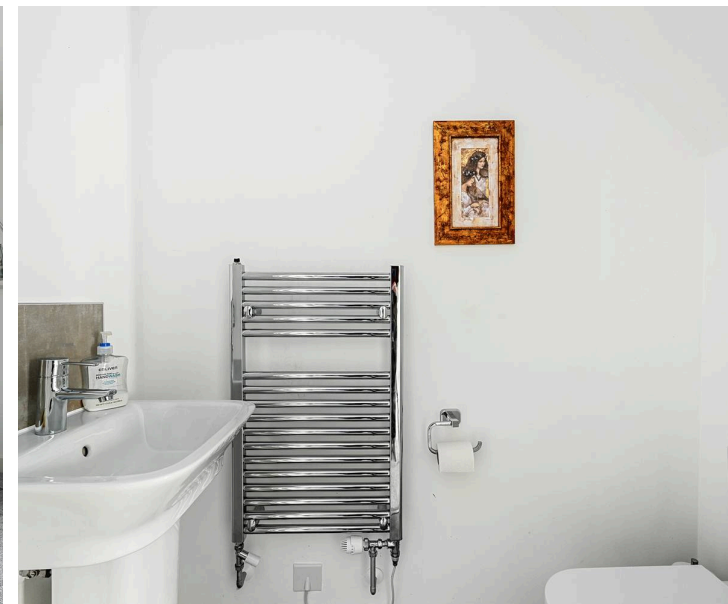
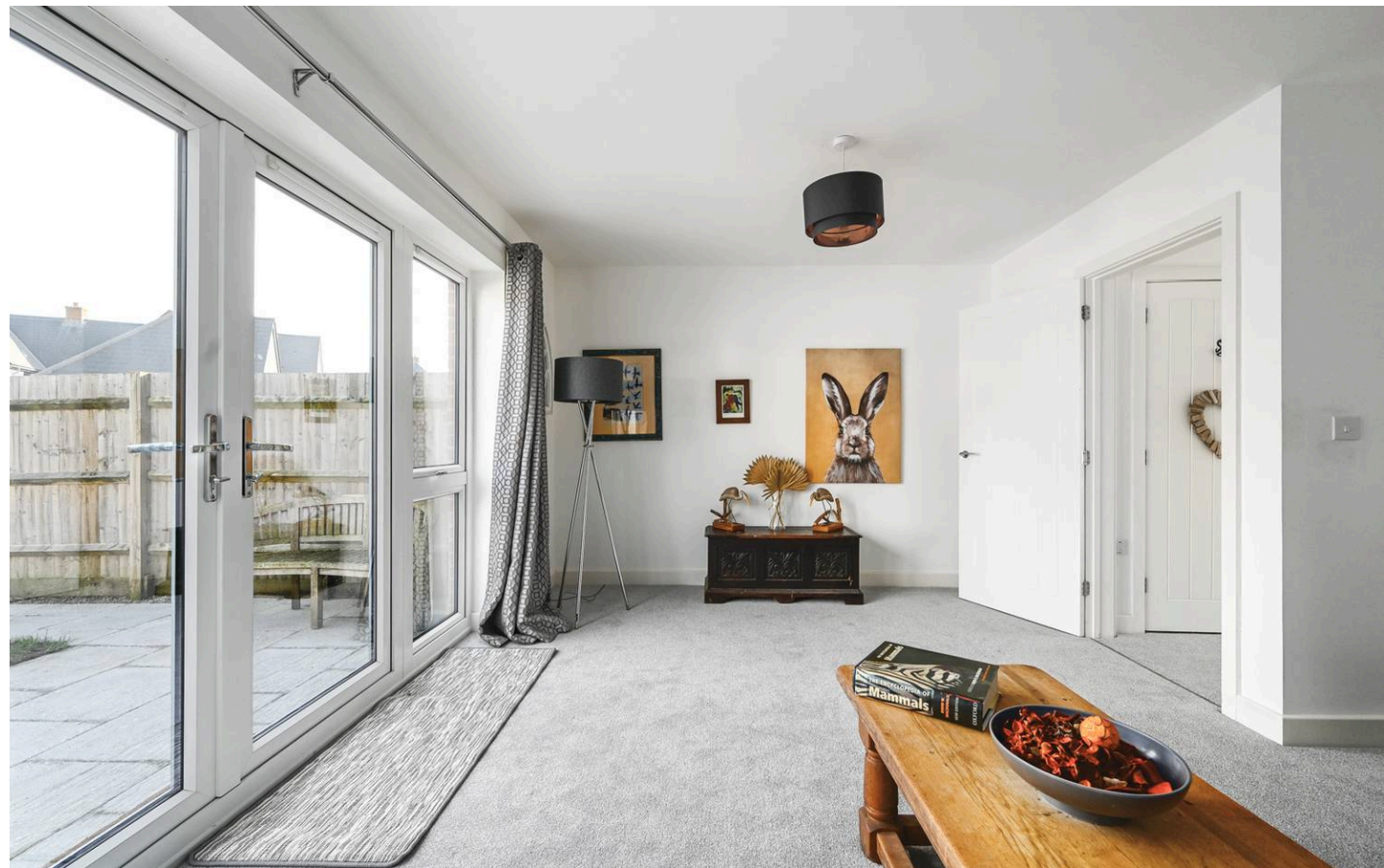
Landing

Carpeted with doors leading to bedrooms and family bathroom.

Bedroom

13' 9" x 13' 8" (4.19m x 4.17m)

Carpeted with window to front and built in wardrobes.





En-suite

White suite comprising low level wc, wash hand basin with mixer tap, tiled shower cubicle, inset spotlights, locally tiled walls and towel radiator.

Bedroom

10' 4" x 9' 2" (3.15m x 2.79m)

Carpeted with window to rear.

Bedroom

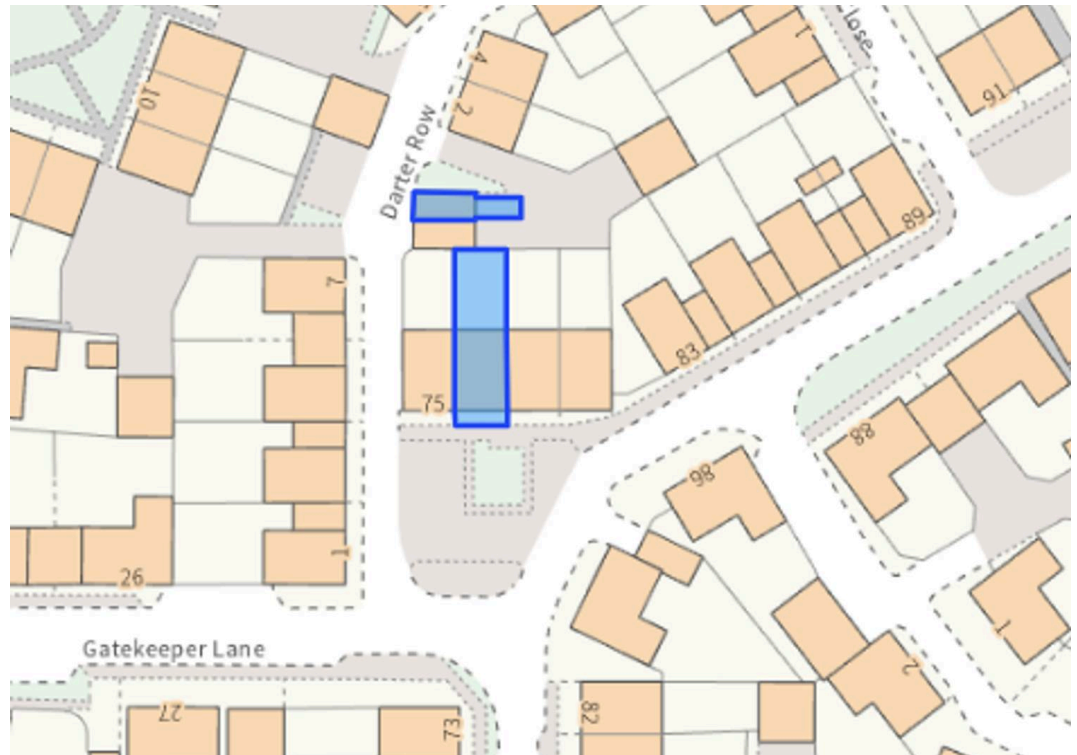
9' 2" x 7' 0" (2.79m x 2.13m)

Carpeted with window to rear.

Family Bathroom

White suite comprising low level wc, wash hand basin with mixer tap, panelled bath with mixer tap and shower over & glass shower screen, locally tiled walls, inset spotlights.

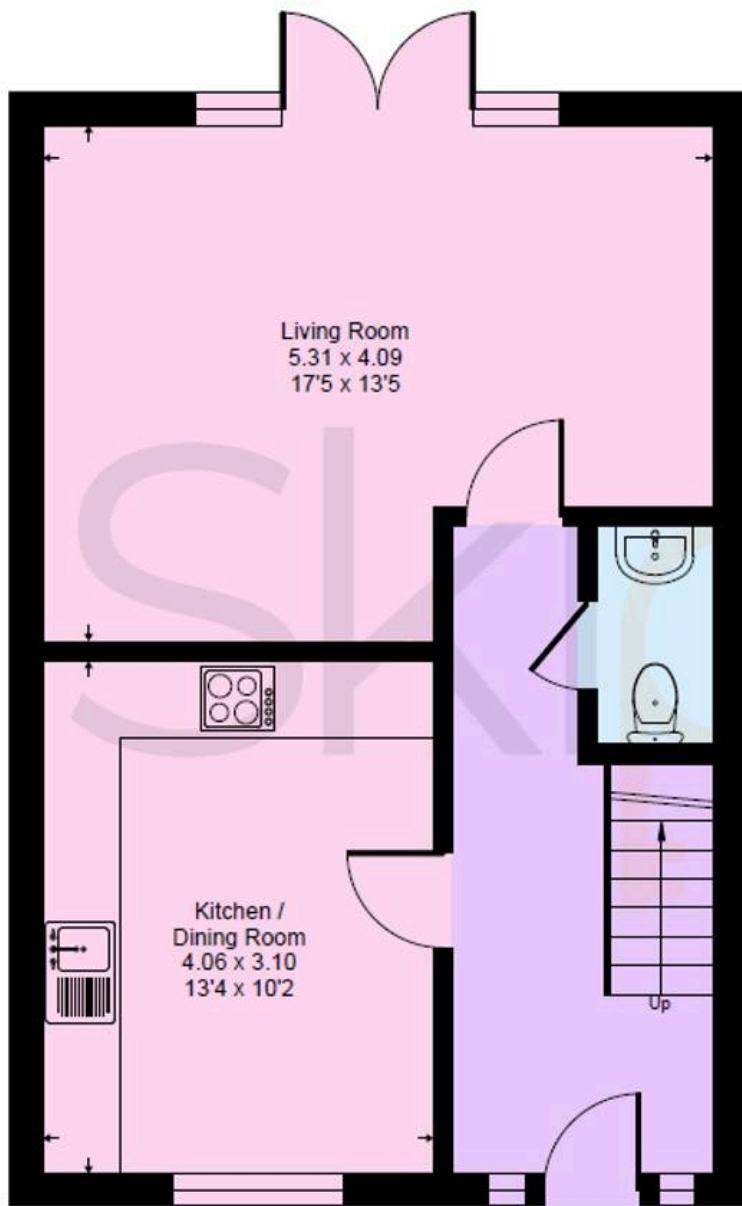




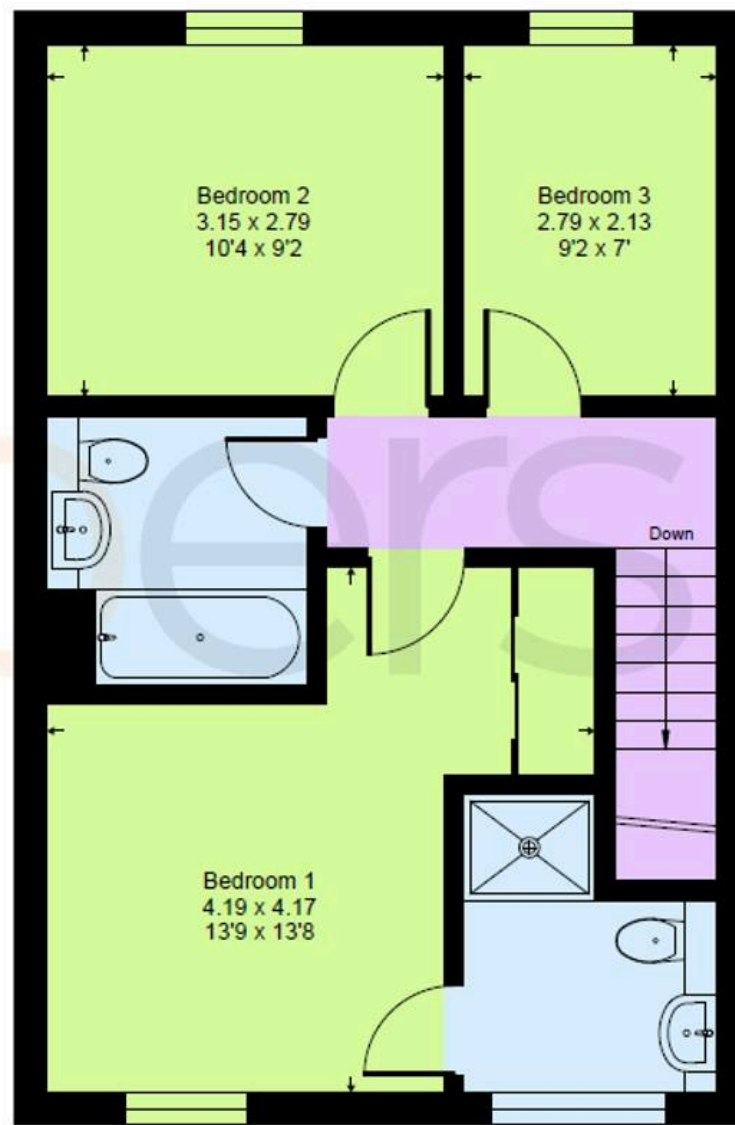


Conningbrook Lakes, TN24

Approximate Gross Internal Area = 88.2 sq m / 950 sq ft



Ground Floor



First Floor



Skippers Estate Agents – Ashford

5 Kings Parade High Street, Ashford – TN24 8TA

01233 632383

ashford@skippers-ea.co.uk

skippers-ea.co.uk

Skippers

