



39 Butterside Road, Kingsnorth
£409,950

Skippers

39 Butterside Road

Kingsnorth, Ashford

Impeccably presented 4-bed detached house in sought-after Park Farm location. Features loft conversion, en-suites, stunning kitchen, garage with parking, landscaped garden. Modern living at its finest.

Council Tax band: E

Tenure: Freehold

- Well Presented Detached Family Home
- Benefitting from Loft Conversion & Extension
- Garage & Driveway Parking
- En-suites to 2 Bedrooms
- Stunning Kitchen/Dining Room
- Popular Park Farm Location
- Good Access to Local Amenities Including Tesco Superstore & Public Transport Links to Town Centre & Train Station
- Enclosed Rear Garden
- Cosy Lounge with Living Flame Effect Electric Feature Fire



Hallway

With stairs leading to first floor and doors leading to lounge, kitchen/diner and cloakroom.

Cloakroom

Low level wc, wash hand basin with mixer tap and vanity cupboard under. Obscured window to front.

Lounge

15' 6" x 9' 11" (4.72m x 3.02m)

Double aspect with window to front and side, carpeted and doors leading through to kitchen/diner. Built in media wall with electric feature fireplace.

Kitchen/Diner

20' 5" x 13' 9" (6.22m x 4.19m)

Good range of cupboards and drawers beneath work surface, centre island with breakfast bar, induction hob with extractor over and cupboards under, x 2 eye level ovens, 1 and half bowl sink with mixer tap and drainer, wall mounted cupboards, bi fold doors leading to rear garden, Velux windows and inset spotlights.

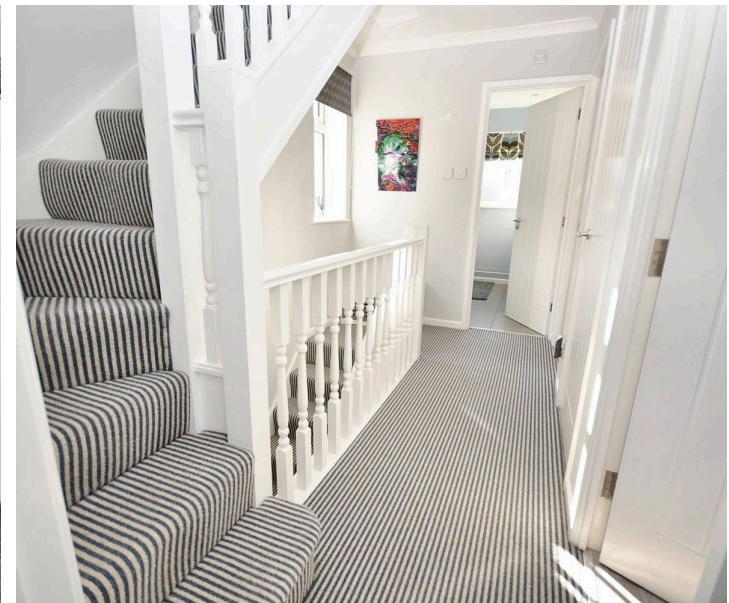
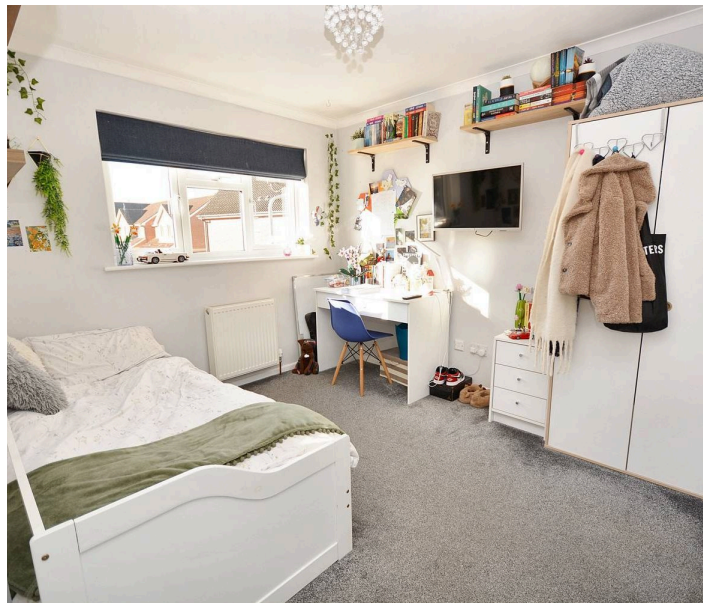
Landing

With stairs leading to second floor and airing cupboard.

Bedroom

12' 1" x 9' 7" (3.68m x 2.92m)

Carpeted with window to rear.





En-suite

Low level wc, wash hand basin with vanity storage under, tiled shower cubicle, obscured window to side.

Bedroom

11' 8" x 9' 7" (3.56m x 2.92m)

With window to front.

Bedroom

7' 1" x 7' 0" (2.16m x 2.13m)

Carpeted with window to front.

Family Bathroom

White suite comprising low level wc, wash hand basin with vanity storage under, I-shaped panelled bath with mixer tap and shower over also shower screen, towel radiator, locally tiled walls and obscured window to rear.

2nd floor Landing

Bedroom

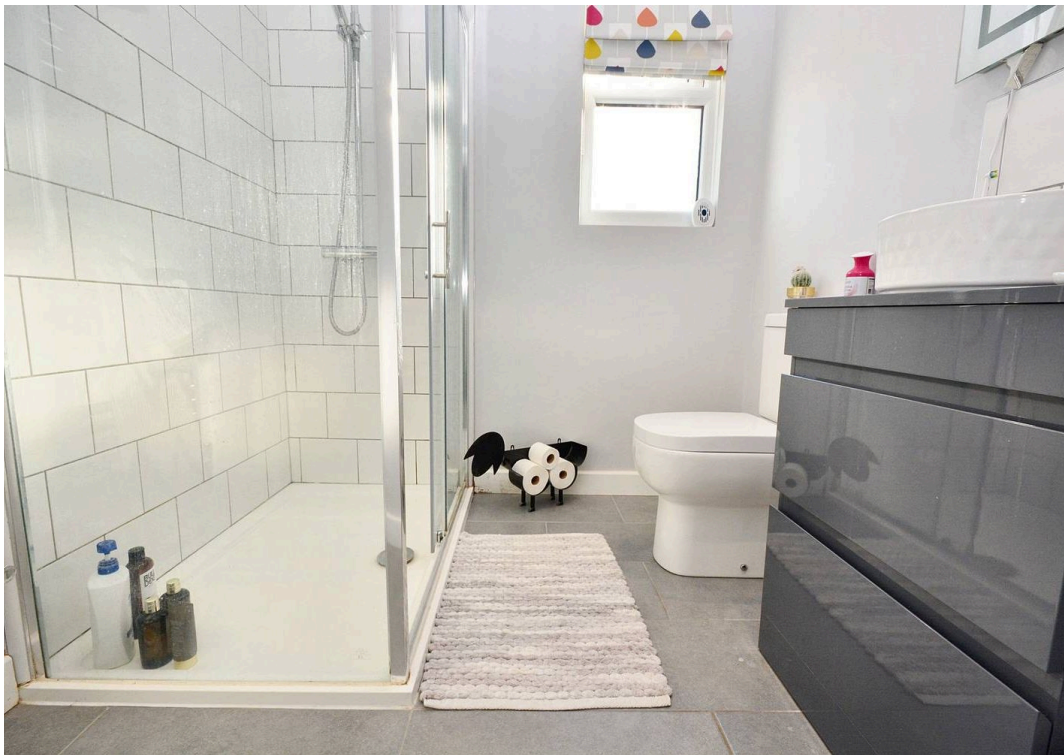
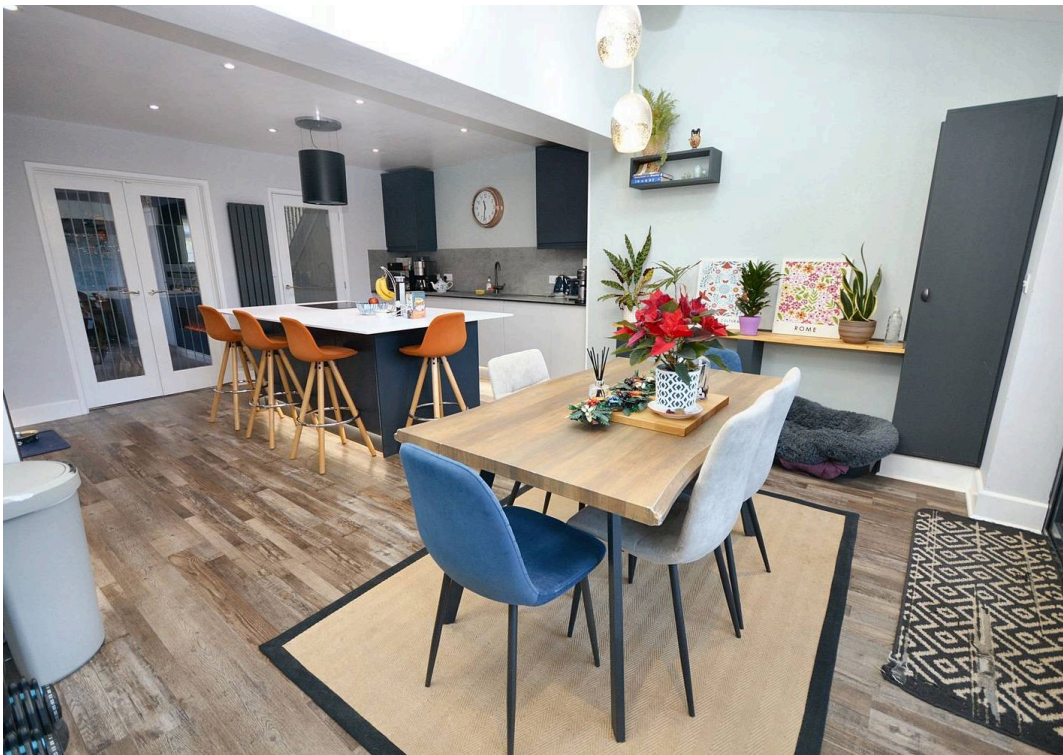
18' 3" x 12' 7" (5.56m x 3.84m)

Carpeted with Velux windows and further window to side, eaves storage, built in storage units, walk in dressing area with built in wardrobes.

En-suite

Low level wc, wash hand basin with mixer tap and vanity storage under, walk in fully tiled shower cubicle, towel radiator, obscured window to side.

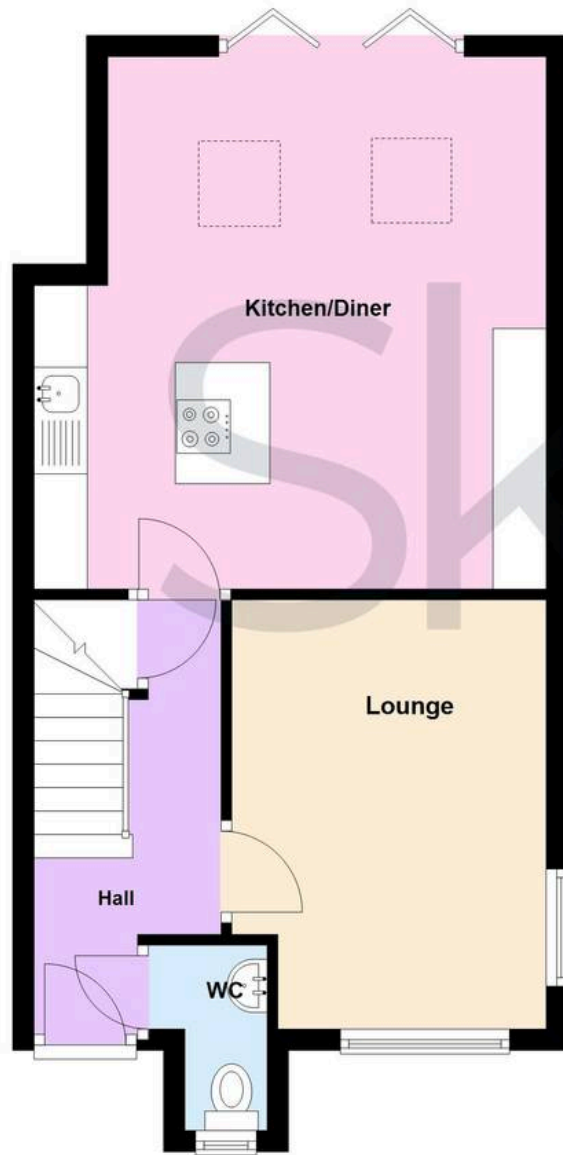








Ground Floor



First Floor



Second Floor





Skippers Estate Agents – Ashford

5 Kings Parade High Street, Ashford – TN24 8TA

01233 632383

ashford@skippers-ea.co.uk

skippers-ea.co.uk

Skippers

