



12 Hill Rise, Ashford

Guide Price £200,000

Skippers

12 Hill Rise

Ashford, Ashford

This modern one-bedroom starter home is positioned on a popular and contemporary residential development with the added benefit of off-road parking for one vehicle.

Council Tax band: D

Tenure: Freehold

- One Bedroom House
- Modern And Well Presented Home
- Quiet Residential Setting With A Modern Layout And Design
- No chain
- Sought after Orchard Heights development



Lounge

14' 0" x 13' 2" (4.27m x 4.01m)

Fitted carpet, radiator. Double aspect window.

Kitchen

8' 0" x 6' 8" (2.44m x 2.03m)

Matching wall and base units. Space and plumbing for a washing machine Window to the front. Electric hob and oven. Stainless steel sink

Bedroom

14' 0" x 13' 1" (4.27m x 3.99m)

Fitted carpet, radiator double aspect window.

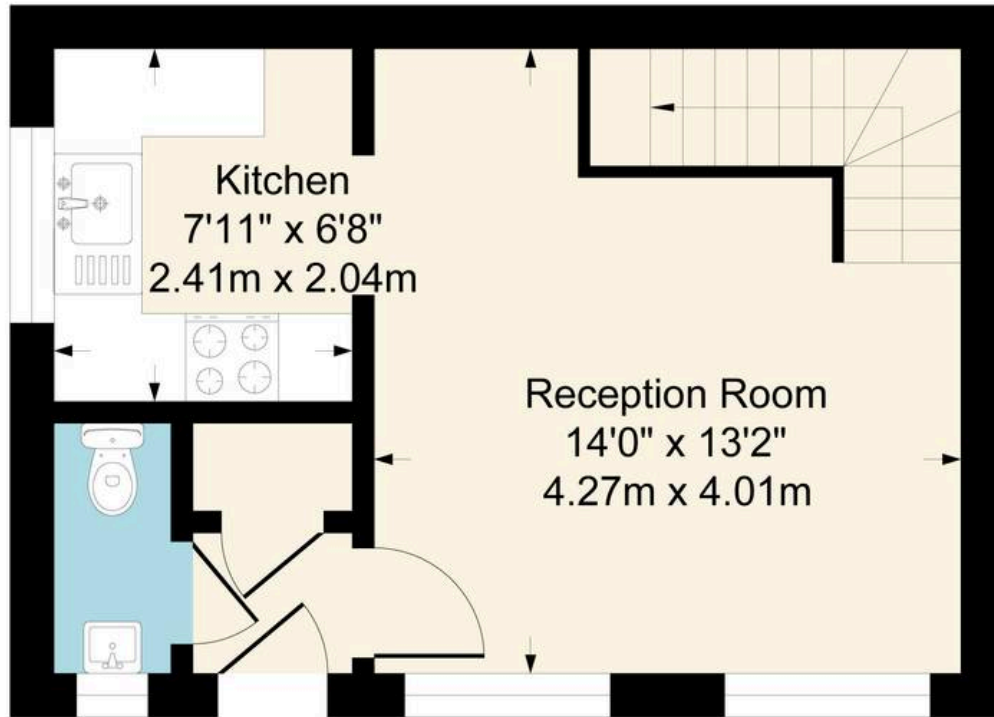
Bathroom

6' 9" x 6' 11" (2.06m x 2.10m)

Stone effect flooring. Part tiled, low level w.c, hand basin roll top bath with overhead shower. Window to the rear.



Approximate Gross Internal Area
552 sq ft - 51 sq m



Ground Floor



First Floor

Bathroom
6'9" x 6'7"
2.07m x 2.00m

Although every attempt has been made to ensure accuracy, all measurements are approximate.
This floorplan is for illustrative purposes only and not to scale.
Measured in accordance with RICS Standards.



Skippers Estate Agents – Ashford

5 Kings Parade High Street, Ashford – TN24 8TA

01233 632383

ashford@skippers-ea.co.uk

skippers-ea.co.uk

Skippers

