



135 Kingsnorth Road, Ashford

In Excess of £385,000

Skippers

135 Kingsnorth Road

Ashford, Ashford

Spacious Three-Bedroom Detached Home with Generous Garden and parking area in a prime Ashford Location with no onward chain.

Council Tax band: C

Tenure: Freehold

- Detached Three Bedroom
- Off Street Parking To The Front
- Large Parking Area To The Rear



Hallway

Wood effect flooring. Doorway leading to lounge/dining room. Stairs leading to upstairs accommodation.

Lounge/Diner

25' 4" x 14' 9" (7.72m x 4.50m)

Fitted carpet. Bay window to the front. Decorative fireplace. Dining area fitted carpet with triple aspect windows.

Kitchen

14' 10" x 10' 0" (4.51m x 3.06m)

Double aspect kitchen. Wood effect flooring. Matching wall and base units. Sink with mixer tap. Gas hob with overhead extractor.

Utility

16' 5" x 9' 4" (5.01m x 2.84m)

Flexible utility area including guest cloakroom. Space and plumbing for washing machine.

Bedroom One

14' 9" x 11' 3" (4.50m x 3.43m)

Wood effect flooring, radiator. Feature windows.

Bedroom Two

12' 0" x 9' 2" (3.66m x 2.80m)

Wood effect flooring, radiator, window to rear

Bedroom Three

12' 10" x 9' 4" (3.90m x 2.84m)

Wood effect flooring, radiator. Window to rear

Bathroom

10' 0" x 6' 4" (3.06m x 1.93m)

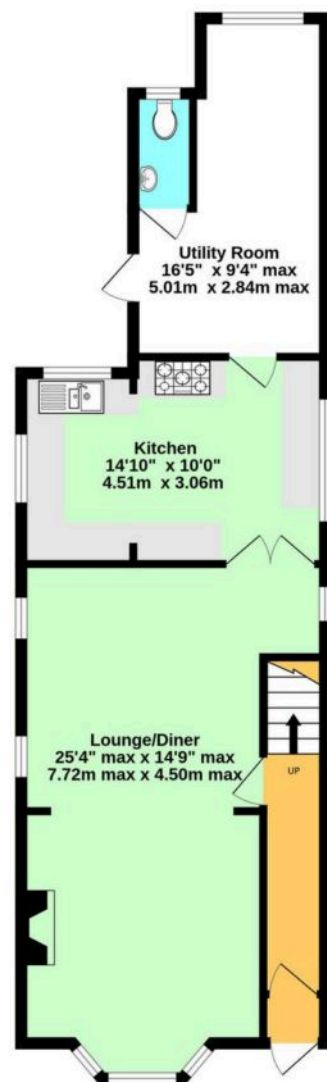
Part tiled, wood effect flooring. Low level wc, hand basin, roll top "P shape" bath with overhead shower. Obscured glass double glazed window





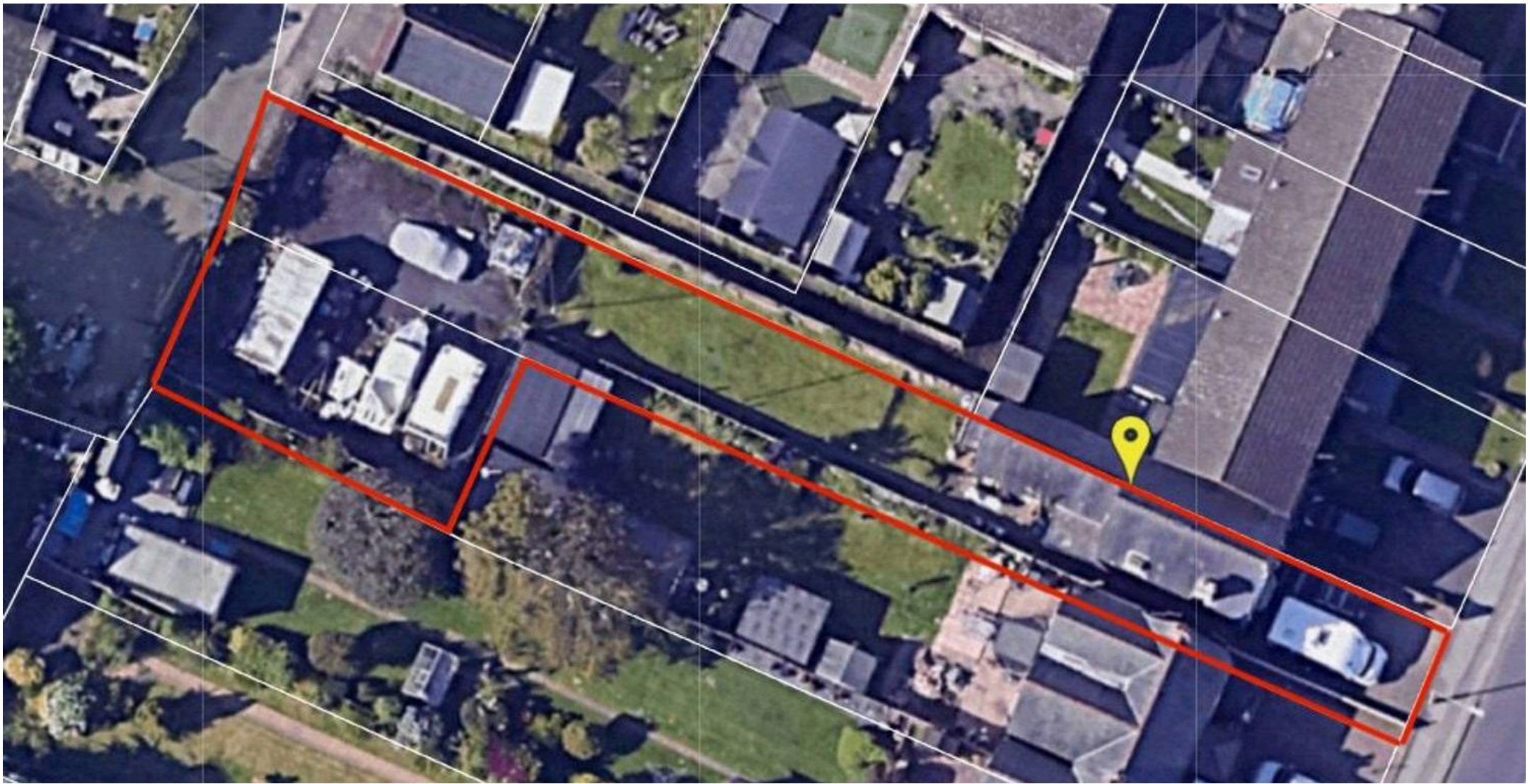


Ground Floor



1st Floor





Skippers Estate Agents – Ashford

5 Kings Parade High Street, Ashford – TN24 8TA

01233 632383

ashford@skippers-ea.co.uk

skippers-ea.co.uk

Skippers

