



95 Lakemead, Ashford
£150,000

Skippers

95 Lakemead

Ashford, Ashford

Situated in the popular Singleton area of Ashford, this one-bedroom first-floor maisonette offers a comfortable living space. Accessed via its own private entrance free from communal areas. Council Tax band: A

Tenure: Freehold

- One Bedroom Maisonette
- No Ground Rent
- Allocated Parking
- Singleton Area



Hallway

Entrance leading to stairs and upstairs accommodation

Lounge

16' 8" x 12' 1" (5.08m x 3.69m)

Wood effect flooring, electric radiator. Double glazed window to front.

Kitchen

12' 10" x 5' 7" (3.91m x 1.70m)

Wood effect flooring. Matching wall and base units. Space and plumbing for washing machine. Sink with mixer tap. Window to rear

Shower Room

Low level wc, hand basin and shower.

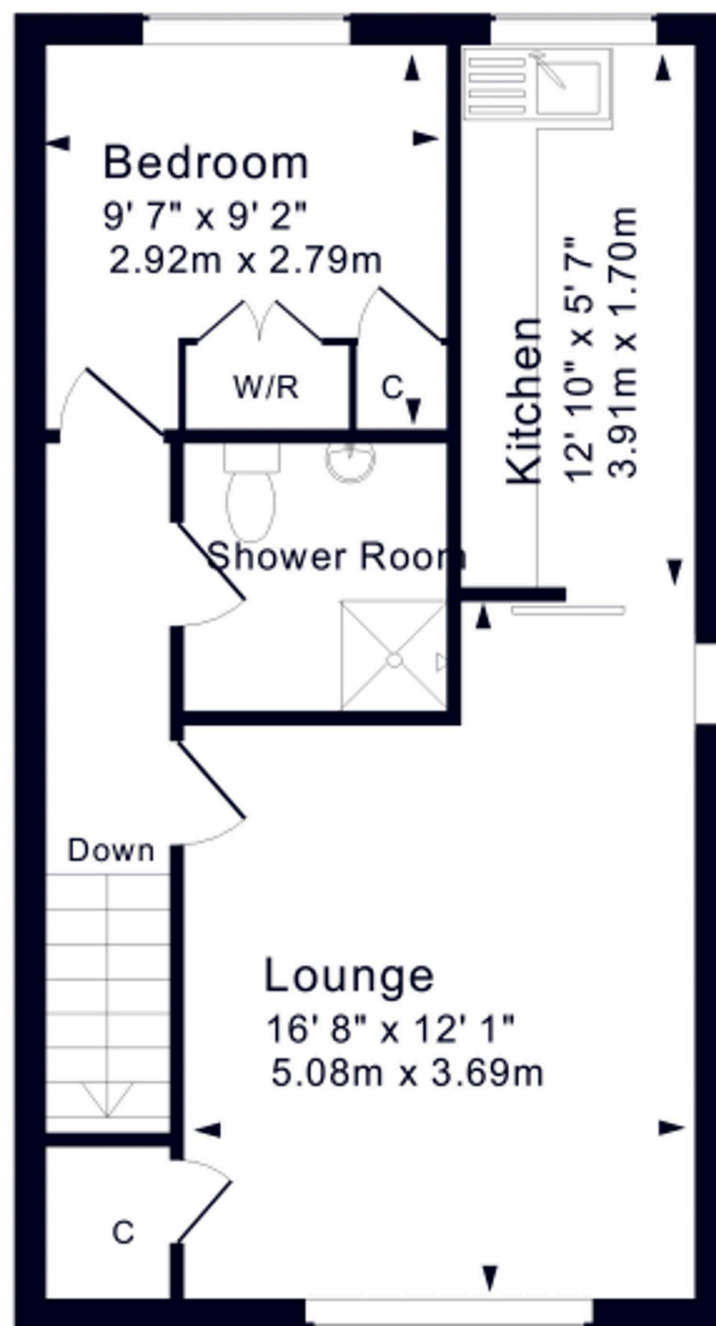
Bedroom

9' 7" x 9' 2" (2.92m x 2.79m)

Double bedroom, fitted carpet and window to rear







First Floor

Approx. Gross Internal Floor Area: 465 Sq. Ft. / 43 Sq. M
184-561j Copyright Jemesis Ltd 2015



Skippers Estate Agents – Ashford

5 Kings Parade High Street, Ashford – TN24 8TA

01233 632383

ashford@skippers-ea.co.uk

skippers-ea.co.uk

Skippers

