



28 Musgrove, Ashford
£285,000

28 Musgrove

Ashford, Ashford

A 3-bedroom end-terraced home, located within close walking distance to Victoria Park and the Ashford International Station, offering scope for improvement and modernisation with a generous garden and driveway parking. No onward chain. Council Tax band: B

Tenure: Freehold

- 3-bedroom end-terrace house
- Driveway parking for 1 car
- Downstairs cloakroom/WC
- Generous garden
- Would benefit from some modernisation
- Walking distance of Victoria Park & Ashford International Station
- No onward chain



Porch

uPVC construction, door to the front with windows to the front and side, carpet tiles and door into Entrance Hallway.

Entrance Hallway

uPVC door to the front Porch, stairs to first-floor with under-stairs storage cupboard, door into Living Room, radiator and fitted carpet.

Living Room

12' 7" x 13' 1" (3.84m x 4.00m)

Window to the front, fireplace with inset electric fire, archway through to then Dining Room, radiator and fitted carpet.

Dining Room

8' 11" x 10' 0" (2.72m x 3.05m)

French doors opening to the rear garden, door to kitchen, radiator and fitted carpet.

Kitchen

9' 7" x 10' 2" (2.93m x 3.09m)

Window to the rear, door leading to Lean-to, wall mounted central heating gas boiler, tiled splash back and vinyl flooring. Kitchen comprising matching wall and base units with work surfaces over, inset sink/drain, space and gas supply for cooker. Would benefit from modernising.

Lean-to

4' 4" x 27' 1" (1.32m x 8.26m)

uPVC door to the front, double doors leading to the garden, door to downstairs WC, radiator and vinyl flooring.

Cloakroom

Window to the rear, WC, wash hand basin, plumbing and space for washing machine, vinyl flooring.





Landing

Window to the side, doors to each room, loft access, fitted carpet to the stairs and landing.

Bedroom 1

10' 4" x 11' 6" (3.14m x 3.51m)

Window to the front, built-in cupboard, radiator and fitted carpet.

Bedroom 2

11' 3" x 10' 4" (3.42m x 3.15m)

Window to the rear, radiator and fitted carpet.

Bedroom 3

8' 4" x 8' 2" (2.55m x 2.49m)

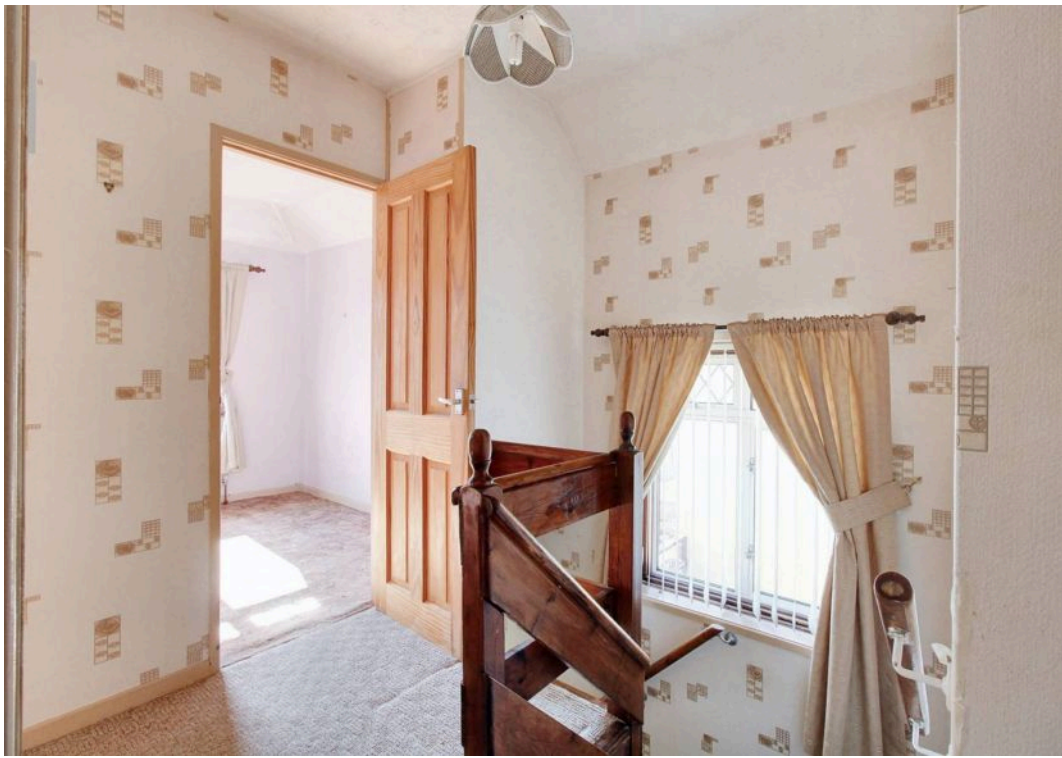
Window to the front, built-in cupboard, radiator and fitted carpet.

Bathroom

Window to the side, corner bath, square shower enclosure with thermostatic shower, WC, wash basin, radiator, half height wall tiling (fully tiled to shower enclosure), carpet tiles.

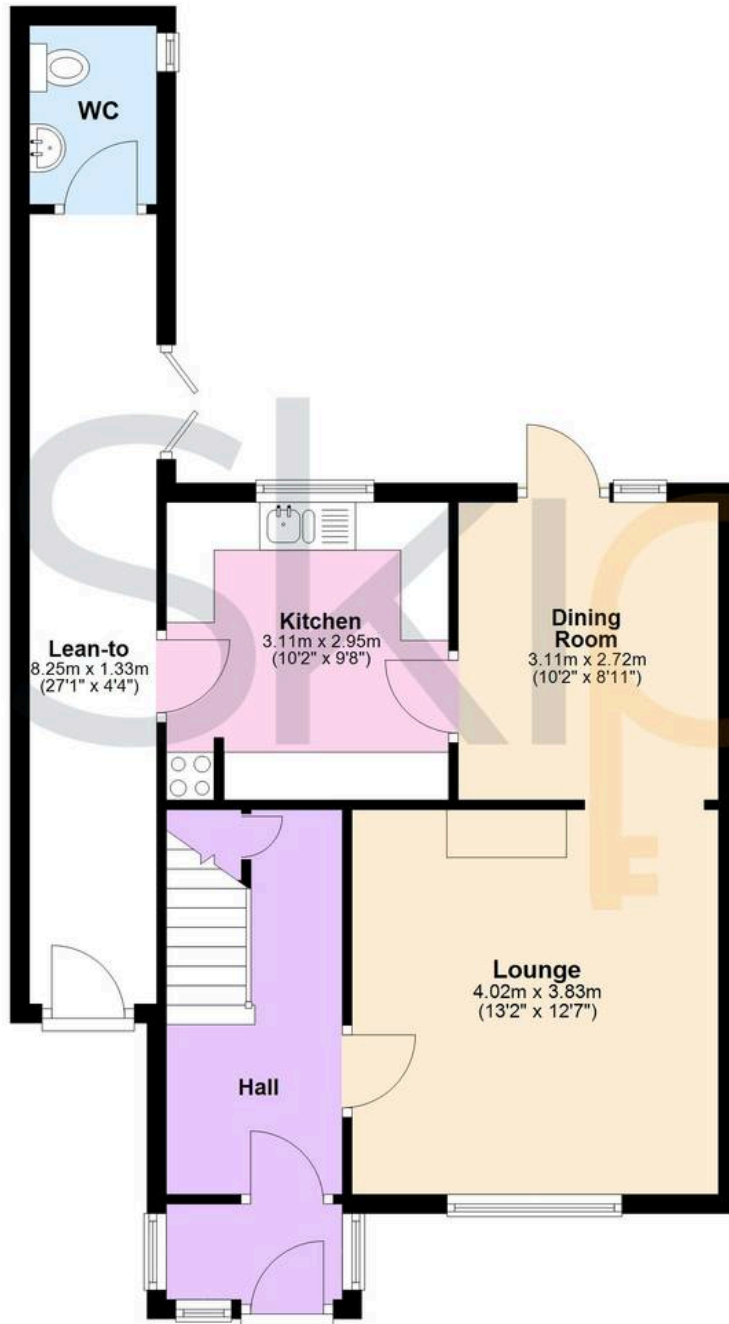






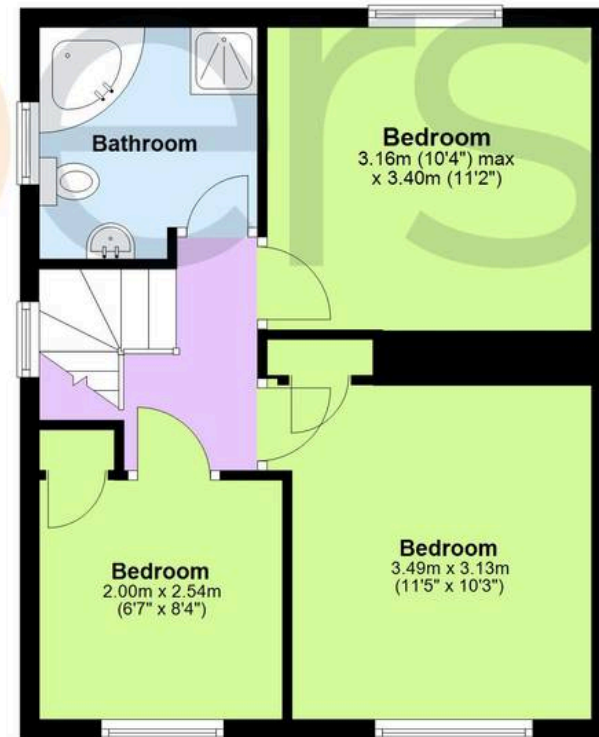
Ground Floor

Approx. 57.9 sq. metres (622.7 sq. feet)



First Floor

Approx. 41.9 sq. metres (451.3 sq. feet)



Total area: approx. 99.8 sq. metres (1074.0 sq. feet)



Skippers Estate Agents – Ashford

5 Kings Parade High Street, Ashford – TN24 8TA

01233 632383

ashford@skippers-ea.co.uk

skippers-ea.co.uk



