



81 Romney Road, Willesborough
£275,000

81 Romney Road

Willesborough, Ashford

This well-presented period property offers a blend of character and comfort, located in Willesborough
Council Tax band: B

Tenure: Freehold

- Willesborough Area
- Convenient location close to Ashford International Station, town centre, schools and local amenities
- Period property
- Three Bedrooms
- Front and rear garden



Hallway

Stairs leading to first floor accommodation. Decorative period archway.

Siting Room

10' 10" x 10' 9" (3.31m x 3.27m)

Window to the front. Feature fireplace. Fitted Carpet, radiator

Dining Room

10' 3" x 10' 9" (3.13m x 3.27m)

Bright open space with polished floorboards. French doors leading to the garden, storage under stairs. Doorway leading to kitchen. Radiator.

Kitchen

10' 1" x 6' 5" (3.07m x 1.96m)

Matching wall and base units, stainless steel sink with mixer tap. Vinyl flooring, window to the side.

Bathroom

5' 1" x 9' 6" (1.54m x 2.89m)

Low level wc, hand basin with storage. Bath with overhead shower. Part tiled. Tiled flooring

Bedroom One

10' 6" x 13' 9" (3.21m x 4.20m)

Original polished floorboards. Window to the front. Radiator.

Bedroom Two

11' 1" x 8' 0" (3.38m x 2.44m)

Window to the rear, fitted carpet, radiator

Bedroom Three

10' 0" x 6' 11" (3.06m x 2.12m)

Fitted carpet, radiator, window to the rear





Hallway

Stairs leading to first floor accommodation.
Decorative period archway.

Siting Room

10' 10" x 10' 9" (3.31m x 3.27m)

Window to the front. Feature fireplace. Fitted Carpet, radiator

Dining Room

10' 3" x 10' 9" (3.13m x 3.27m)

Bright open space with polished floorboards. French doors leading to the garden, storage under stairs. Doorway leading to kitchen. Radiator.

Kitchen

10' 1" x 6' 5" (3.07m x 1.96m)

Matching wall and base units, stainless steel sink with mixer tap. Vinyl flooring, window to the side.

Bathroom

5' 1" x 9' 6" (1.54m x 2.89m)

Low level wc, hand basin with storage. Bath with overhead shower. Part tiled. Tiled flooring

Bedroom One

10' 6" x 13' 9" (3.21m x 4.20m)

Original polished floorboards. Window to the front. Radiator.

Bedroom Two

11' 1" x 8' 0" (3.38m x 2.44m)

Window to the rear, fitted carpet, radiator

Bedroom Three

10' 0" x 6' 11" (3.06m x 2.12m)

Fitted carpet, radiator, window to the rear





Hallway

Stairs leading to first floor accommodation.
Decorative period archway.

Siting Room

10' 10" x 10' 9" (3.31m x 3.27m)

Window to the front. Feature fireplace. Fitted Carpet, radiator

Dining Room

10' 3" x 10' 9" (3.13m x 3.27m)

Bright open space with polished floorboards. French doors leading to the garden, storage under stairs. Doorway leading to kitchen. Radiator.

Kitchen

10' 1" x 6' 5" (3.07m x 1.96m)

Matching wall and base units, stainless steel sink with mixer tap. Vinyl flooring, window to the side.

Bathroom

5' 1" x 9' 6" (1.54m x 2.89m)

Low level wc, hand basin with storage. Bath with overhead shower. Part tiled. Tiled flooring

Bedroom One

10' 6" x 13' 9" (3.21m x 4.20m)

Original polished floorboards. Window to the front. Radiator.

Bedroom Two

11' 1" x 8' 0" (3.38m x 2.44m)

Window to the rear, fitted carpet, radiator

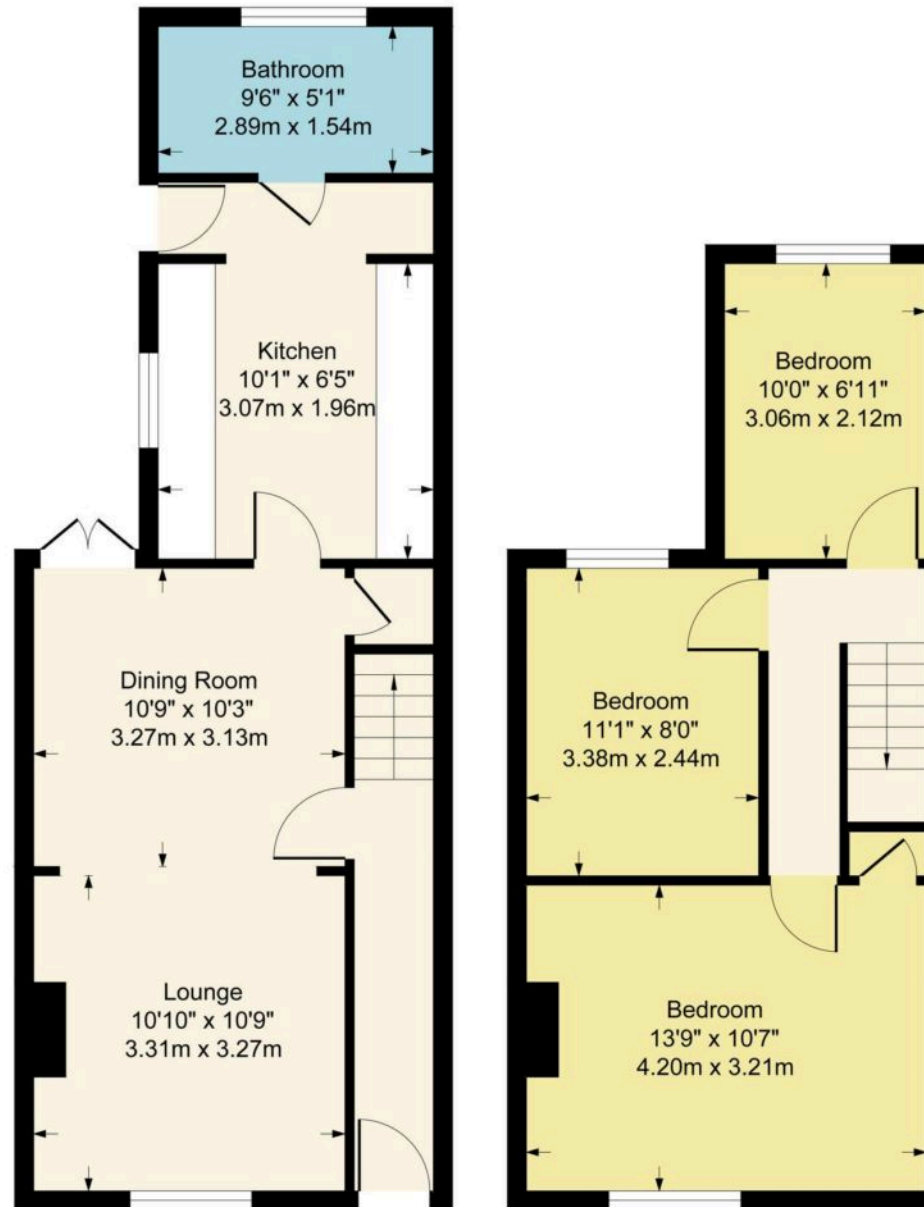
Bedroom Three

10' 0" x 6' 11" (3.06m x 2.12m)

Fitted carpet, radiator, window to the rear



Approximate Gross Internal Area
840 sq ft - 78 sq m



Ground Floor

First Floor

Although every attempt has been made to ensure accuracy, all measurements are approximate.
This floorplan is for illustrative purposes only and not to scale.
Measured in accordance with RICS Standards.



Skippers Estate Agents – Ashford

5 Kings Parade High Street, Ashford – TN24 8TA

01233 632383

ashford@skippers-ea.co.uk

skippers-ea.co.uk

Skippers

