



7 Oakham Drive, Lydd

Romney Marsh

£280,000





## 7 Oakham Drive

Lydd, Romney Marsh

Charming 3-bed semi-detached house in Lydd. Stylish interior, modern kitchen, en-suite, and cloakroom. Spacious outdoor area with parking and garden. Ideal for relaxing and entertaining. Council Tax band: C

Tenure: Freehold

- No onward chain
- Spacious three bedroom home
- Two large reception rooms
- Located in a popular area of Lydd
- Lovingly presented
- En-suite to the master bedroom
- Driveway
- Ground floor cloakroom
- Front and rear garden





#### Entrance hall

#### Reception room

15' 7" x 12' 2" (4.75m x 3.70m)

One of two reception rooms, leading to the kitchen.

#### Kitchen

15' 8" x 9' 8" (4.78m x 2.95m)

Light bright kitchen with sliding doors leading to the garden.

#### Reception room

18' 1" x 8' 10" (5.50m x 2.70m)

This is a lovely spacious room with French doors leading you to the garden.

#### Cloakroom

Very handy ground floor cloakroom with toilet and sink.

#### Landing

Leading to three bedrooms and the family bathroom.

#### Bedroom

10' 8" x 8' 10" (3.25m x 2.70m)

This large double bedroom with built in storage and En-suite.

#### En-suite shower room

#### Bedroom

8' 10" x 8' 10" (2.70m x 2.70m)

This bedroom has views over the garden and built in storage.

#### Bedroom

9' 10" x 6' 7" (3.00m x 2.00m)

Bedroom three with views over the garden.

#### Family bathroom

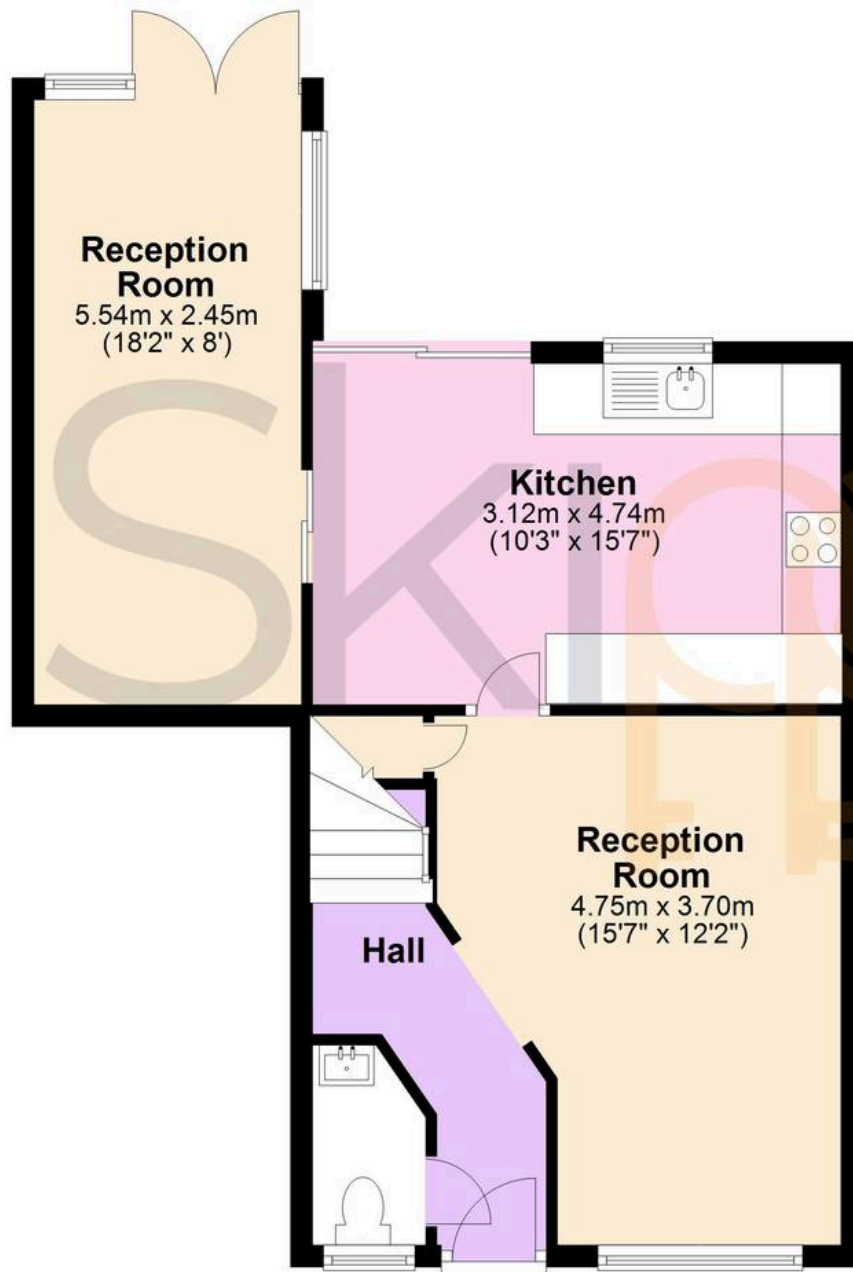






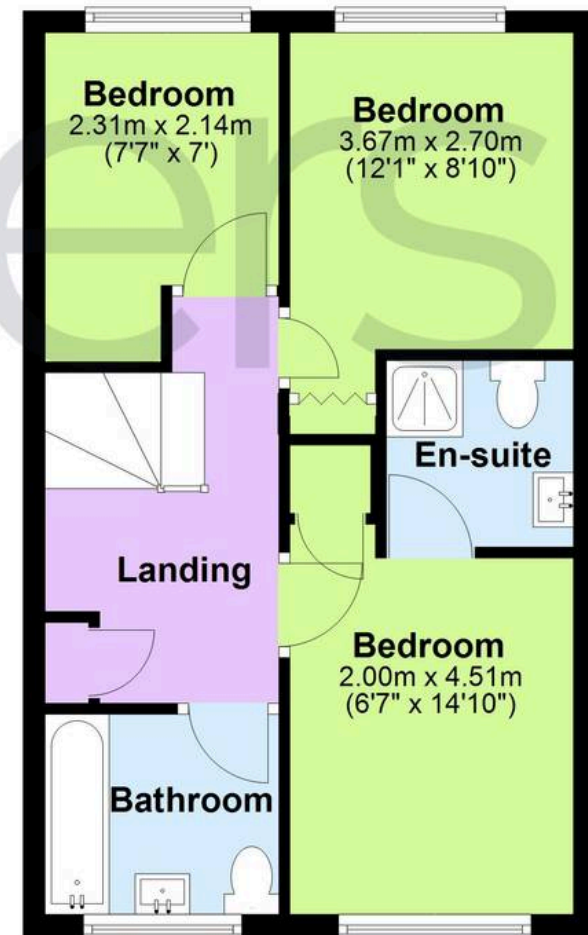
## Ground Floor

Approx. 52.6 sq. metres (566.0 sq. feet)



## First Floor

Approx. 47.8 sq. metres (514.3 sq. feet)



Total area: approx. 100.4 sq. metres (1080.3 sq. feet)





## Skippers Estate Agents – New Romney

Andrew & Co, 55 High Street – TN28 8AH

01797 362898

[newromney@skippers-ea.co.uk](mailto:newromney@skippers-ea.co.uk)

[skippers-ea.co.uk](http://skippers-ea.co.uk)

Skippers